

Phase I dose-escalation study of the c-Met tyrosine kinase inhibitor SAR125844 in Asian patients with advanced solid tumors, including patients with *MET*-amplified gastric cancer

Kohei Shitara¹, Tae Min Kim², Tomoya Yokota³, Masahiro Goto⁴, Taroh Satoh⁵, Jin-Hee Ahn⁶, Hyo Song Kim⁷, Sylvie Assadourian⁸, Corinne Gomez⁹, Marzia Harnois⁸, Satoshi Hamauchi³, Toshihiro Kudo⁵, Toshihido Doi¹ and Yung-Jue Bang²

¹Department of Experimental Therapeutics and Gastrointestinal Oncology, National Cancer Center Hospital East, Kashiwa, Japan

²Department of Internal Medicine, Seoul National University College of Medicine, Seoul, Korea

³Division of Gastrointestinal Oncology, Shizuoka Cancer Center, Shizuoka, Japan

⁴Cancer Chemotherapy Center, Osaka Medical College Hospital, Osaka, Japan

⁵Department of Frontier Science for Cancer and Chemotherapy, Osaka University Graduate School of Medicine, Osaka, Japan

⁶Department of Oncology, Asan Medical Center, Seoul, Korea

⁷Division of Medical Oncology, Yonsei University College of Medicine, Seoul, Korea

⁸Research and Development, Sanofi, Paris, France

⁹Pharmacokinetics and Distribution, Sanofi, Paris, France

Correspondence to: Yung-Jue Bang, **email:** bangyj@snu.ac.kr

Keywords: gastric cancer, *MET* amplification, Asian population, phase I trial

Received: January 17, 2017

Accepted: June 04, 2017

Published: June 16, 2017

Copyright: Shitara et al. This is an open-access article distributed under the terms of the Creative Commons Attribution License 3.0 (CC BY 3.0), which permits unrestricted use, distribution, and reproduction in any medium, provided the original author and source are credited.

ABSTRACT

SAR125844 is a potent and selective inhibitor of the c-Met kinase receptor. This was an open-label, phase I, multicenter, dose-escalation, and dose-expansion trial of SAR125844 in Asian patients with solid tumors, a subgroup of whom had gastric cancer and *MET* amplification (NCT01657214). SAR125844 was administered by intravenous infusion (260–570 mg/m²) on days 1, 8, 15, and 22 of each 28-day cycle. Objectives were to determine the maximum tolerated dose (MTD) and to evaluate SAR125844 safety and pharmacokinetic profile. Antitumor activity was also assessed. Of 38 patients enrolled (median age 64.0 years), 22 had gastric cancer, including 14 with *MET* amplification. In the dose-escalation cohort (*N* = 19; unselected population, including three patients with *MET*-amplification [two with gastric cancer and one with lung cancer]), the MTD was not reached, and the recommended dose was established at 570 mg/m². Most frequent treatment-emergent adverse events (AEs) were nausea (36.8%), vomiting (34.2%), decreased appetite (28.9%), and fatigue or asthenia, constipation, and abdominal pains (each 21.1%); none appeared to be dose-dependent. Grade ≥ 3 AEs were observed in 39.5% of patients and considered drug-related in 7.9%. SAR125844 exposure increased slightly more than expected by dose proportionality; dose had no significant effect on clearance. No objective responses were observed in the dose-escalation cohort, with seven patients (three gastric cancer, two colorectal cancer, one breast cancer, and one with cancer of unknown primary origin) having stable disease. Modest antitumor activity was observed at 570 mg/m² in the dose-expansion cohort, comprising patients with *MET*-amplified tumors (*N* = 19). Two gastric cancer patients had partial responses, seven patients had stable disease (six gastric cancer and one kidney cancer), and 10 patients had progressive disease. Single-agent SAR125844 administered up to 570 mg/m² has acceptable tolerability and modest antitumor activity in patients with *MET*-amplified gastric cancer.

INTRODUCTION

Interactions between the receptor tyrosine kinase mesenchymal-epithelial transition factor (c-Met), encoded by the *MET* proto-oncogene, and its ligand, the hepatocyte growth factor (HGF), trigger a broad spectrum of biologic processes involved in tumorigenesis [1].

Aberrant activation of the HGF/c-Met pathway has been observed in various solid tumors, including gastric cancer, most commonly via *MET* gene amplification. A systematic review of 15 studies in gastric cancer showed that both Asian and Western patients with a high level of c-Met have significantly poorer outcomes than do those with low levels of c-Met [2]. Other studies have similarly shown that *MET* gene amplification in gastric cancer is significantly associated with unfavorable clinical outcomes, including substantially shorter survival [3, 4]. Although the frequency of *MET* amplification in gastric cancer is generally low (2–8.3%) [3–7], targeting c-Met is a promising therapeutic approach for patients with *MET*-amplified gastric cancer.

SAR125844 (SAR) is a potent and highly selective, small-molecule c-Met kinase inhibitor. It has a half-maximal inhibitory concentration of 4.2 nM and an inhibitory constant of 2.8 nM [8]. In two xenograft models of *MET*-amplified human gastric tumors, intravenous treatment with single-agent SAR resulted in c-Met kinase inhibition and dose-dependent tumor regression. SAR also had an acceptable toxicity profile [8].

An acceptable tolerability profile was also seen in the completed first-in-human study of single-agent SAR in patients with solid tumors (NCT01391533). Preliminary evidence of antitumor activity was observed in one patient with lung adenocarcinoma and *MET* amplification [9]. That study, conducted in Western countries, explored SAR doses of 50–740 mg/m² and established the recommended dose (RD) at 570 mg/m² per week, intravenously [9].

The present study (NCT01657214) has been completed and aimed to determine the maximum tolerated dose (MTD) and RD of SAR and to explore its antitumor activity in Asian patients with solid tumors, including gastric cancer, and *MET* amplification.

RESULTS

Demographics

In total, 38 Asian patients were treated: 19 in the dose-escalation cohort and 19 in the dose-expansion cohort. Demographics and baseline characteristics are shown in Table 1. Overall, most patients had an Eastern Cooperative Oncology Group (ECOG) performance status (PS) of 0 or 1 (92.1%), were heavily pretreated (68.4% had received three or more prior anticancer therapies), and had gastric cancer (57.9%).

In the dose-escalation cohort, the requirement of *MET* amplification was made optional, and only three

patients (two with gastric cancer and one with lung cancer) had *MET*-amplified tumors.

In the dose-expansion cohort, a mean of 49.4% of cells had more than four gene copies of *MET* and a *MET:CEP7* (centromeric region of chromosome 7) ratio ≥ 2 , indicating tumor *MET* amplification. Total c-Met protein expression data were available for 10 of the 19 patients from the dose-expansion cohort. Total c-Met expression was null or very low in three patients and high ($> 50\%$ of tumor cells with immunohistochemistry score of 2+ or 3+ membrane staining) in the remaining seven patients. Overall, mean level of total c-Met expression was 56%. No correlation was found between total c-Met expression and *MET* amplification (Supplementary Table 1). Of the approximately 400 patients who underwent prescreening, *MET* amplification was found in 73, of whom 19 were treated in the dose-expansion cohort. Of these, 14 (73.7%) had gastric cancer, one (5.3%) had colorectal cancer, and two (10.5%) had lung cancer. Compared with other tumors, gastric cancer tumors had higher percentages of cells with > 4 copies of *MET* and *MET:CEP7* ≥ 2 .

Treatment exposure

The median duration of treatment was 4.1 (range 2–38) weeks. Details of the number of infusions and treatment duration per cohort are indicated in Supplementary Table 2.

MTD and RD

No dose-limiting toxicities (DLTs) were observed during the dose-escalation phase. The MTD was not reached, and 570 mg/m² was selected as the RD in Asian patients because of similar exposure and safety profile to those seen in Western patients [9]. Of 19 patients treated in the expansion cohort at 570 mg/m², one experienced a DLT (transaminase and creatinine increases that were reversible after dose omission and reduction) during cycle 1.

Safety

Treatment-emergent adverse events (TEAEs) were observed in 36 patients (94.7%) and considered study-drug related in 22 patients (57.9%). Serious TEAEs were reported in eight patients (21.1%); none were considered study-drug related. The most frequent TEAEs (Table 2) were nausea (36.8%), vomiting (34.2%), decreased appetite (28.9%), and fatigue or asthenia, constipation, and abdominal pains (21.1% each). The frequency and severity of TEAEs at each dose were comparable. Grade ≥ 3 TEAEs were observed in 15 patients (39.5%) and considered study-drug related in three patients. There were no deaths due to adverse events. Nine patients had at least one dose modification, and one patient had an infusion interrupted because of a grade 2 infusion-related reaction.

Table 1: Patient demographics and baseline characteristics (safety population)

Characteristic	Dose-escalation cohort (N = 19)	Dose-expansion cohort (N = 19)	Total population (N = 38)
Age, median (range), years	60 (28–78)	65 (37–77)	64 (28–78)
Sex, n (%)			
Male	13 (68.4)	10 (52.6)	23 (60.5)
Female	6 (31.6)	9 (47.4)	15 (39.5)
ECOG PS, n (%)			
0	7 (36.8)	9 (47.4)	16 (42.1)
1	11 (58.9)	8 (42.1)	19 (50.0)
2	1 (5.3)	2 (10.5)	3 (7.9)
Primary cancer site, n (%)			
Stomach (gastric cancer)	8 (42.1)*	14 (73.7)	22 (57.9)
Colorectal	5 (26.3)	1 (5.3)	6 (15.8)
Lung	2 (10.5)*	2 (10.5)	4 (10.5)
Pancreas	1 (5.3)	0 (0)	1 (2.6)
Breast	1 (5.3)	0 (0)	1 (2.6)
Unknown primary	0 (0)	1 (5.3)	2 (5.3)
Kidney	0 (0)	1 (5.3)	1 (2.6)
Thymus	1 (5.3)	0 (0)	1 (2.6)
Number of previous anticancer therapies, n (%)			
1	0 (0)	5 (26.3)	5 (13.2)
2	4 (21.1)	3 (15.8)	7 (18.4)
≥ 3	15 (78.9)	11 (58.9)	26 (68.4)

*Two patients with gastric cancer and one patient with lung cancer from the dose-escalation cohort had *MET*-amplified tumors. In the dose-expansion cohort, all patients had *MET*-amplified tumors.
ECOG, Eastern Cooperative Oncology Group; PS: performance status.

One patient discontinued treatment because of a TEAE considered unrelated to the study drug. No major safety concerns were raised by laboratory findings. Two cases of transaminase increase (grade ≥ 3) led to dose modification. No creatinine increases were observed. Anemia was mainly observed in patients with gastric cancer and was attributed to the primary cancer.

Pharmacokinetics

Profiles of the mean blood concentration of SAR over time on days 1 and 22 of cycle 1 are presented in Figure 1. Pharmacokinetic parameters are shown in Table 3. SAR exposure (area under the concentration-time curve for the period covering the dosing interval [AUC_{0-168}]) increased slightly more than dose proportionally over the 260- to 570-mg/m² dose range: a 2.19-fold increase in dose resulted in a 3.00- and a 2.69-fold increase in AUC_{0-168} on days 1 and 22, respectively. This finding is reinforced by the results of the statistical analysis, which showed no significant effect of dose on total body clearance (CL; $P = 0.25$) or CL at steady state (CL_s ; $P = 0.79$). Pharmacokinetic parameters were similar on days 1 and 22, and no accumulation was observed between days 1 and 22. SAR exhibited a large volume of distribution at steady state (approximately 253 L at the RD).

Antitumor activity

No objective responses were observed in the dose-escalation cohort (unselected population). Although 7 patients (three with gastric cancer, two with colorectal cancer, one with breast cancer, and one with cancer of unknown primary origin) had stable disease after 1 month of treatment, all seven stopped treatment within the subsequent 2 months because of disease progression; 11 patients had early disease progression leading to treatment discontinuation in cycle 1. Best overall response and median duration of treatment by dose cohort are shown in Supplementary Figure 1. Median time to tumor progression ranged from 0.9 months at 340 mg/m² to 1.7 months at 440 mg/m².

In the selected population with *MET*-amplified tumors (dose-expansion cohort), two patients (10.5%), both with gastric cancer, had a confirmed partial response, and one patient (also with gastric cancer) had an unconfirmed partial response. These three responders had high levels of *MET* amplification ($\geq 97\%$ amplified cells). However, given the small sample number, no correlation could be identified between the level of *MET* amplification and best change from baseline in tumor measurement (Figure 2). Overall, within the dose-expansion cohort, seven patients

Table 2: Summary of the most common treatment-emergent adverse events occurring in $\geq 10\%$ of all patients

TEAE, <i>n</i> (%)	Dose-escalation cohort				Dose-expansion cohort		Total (<i>N</i> = 38)
	Dose, mg/m ²				All (<i>N</i> = 19)	GC (<i>N</i> = 14)	
	260 (<i>N</i> = 6)	340 (<i>N</i> = 4)	440 (<i>N</i> = 3)	570 (<i>N</i> = 6)			
Nausea	1 (16.7)	2 (50)	0 (0)	3 (50)	8 (42.1)	4 (28.6)	14 (36.8)
Vomiting	1 (16.7)	1 (25.0)	0 (0)	1 (16.7)	10 (52.6)	6 (42.9)	13 (34.2)
Decreased appetite	1 (16.7)	1 (25.0)	1 (33.3)	0 (0)	8 (42.1)	5 (35.7)	11 (28.9)
Constipation	2 (33.3)	0 (0)	1 (33.3)	1 (16.7)	4 (21.1)	2 (14.3)	8 (21.1)
Fatigue/asthenia	3 (50)	0 (0)	1 (33.3)	0 (0)	4 (21.1)	2 (14.3)	8 (21.1)
Abdominal pains	1 (16.7)	0 (0)	1 (33.3)	0 (0)	6 (31.5)	2 (14.3)	8 (21.1)
Pyrexia	4 (66.7)	0 (0)	0 (0)	0 (0)	3 (15.8)	1 (7.1)	7 (18.4)
Injection site reaction/phlebitis	1 (16.7)	0 (0)	0 (0)	1 (16.7)	5 (26.3)	4 (28.6)	7 (18.4)
Back pain	3 (50.0)	0 (0)	0 (0)	0 (0)	2 (10.5)	2 (14.3)	5 (13.2)
Diarrhea	0 (0)	0 (0)	0 (0)	0 (0)	5 (26.3)	4 (28.6)	5 (13.2)
Cancer pain	0 (0)	0 (0)	1 (33.3)	2 (33.3)	1 (5.3)	1 (7.1)	4 (10.5)
Edema, peripheral	0 (0)	0 (0)	0 (0)	1 (16.7)	3 (15.8)	2 (14.3)	4 (10.5)
Insomnia	1 (16.7)	0 (0)	0 (0)	0 (0)	3 (15.8)	2 (14.3)	4 (10.5)
Rash	2 (33.3)	1 (25.0)	0 (0)	0 (0)	1 (5.3)	1 (7.1)	4 (10.5)
Cough	2 (33.3)	1 (25.0)	0 (0)	0 (0)	1 (5.3)	1 (7.1)	4 (10.5)

GC, gastric cancer; TEAE, treatment-emergent adverse events.

(six with gastric cancer and one with kidney cancer) had stable disease and 10 patients (six with gastric cancer, two with lung cancer, one with colorectal cancer, and one with cancer of unknown primary origin) had progressive disease. Best overall response and median duration of treatment are shown in Supplementary Figure 1. Median time to tumor progression was 0.92 (0.4–9) months. In the gastric cancer subpopulation, overall response rate was 14.3% (two of 14 patients) and median time to tumor progression was 1.18 (0.4–9) months.

DISCUSSION

This study aimed to establish the RD of a weekly administration of SAR in Asian patients with solid tumors. No DLTs were observed in the dose-escalation phase, and 570 mg/m² was selected as the RD based on comparable exposure and safety in Asian and Western populations [9]. SAR had an acceptable safety profile, with no major safety concerns and no relevant dose-dependent AEs. Most frequent TEAEs were nausea, vomiting, decreased appetite, fatigue or asthenia, constipation, and abdominal pains. Similar AEs have been reported with other c-Met inhibitors [10–12] and may represent a class effect. SAR exposure levels were slightly higher than predicted by

dose proportionality, but no accumulation was seen after four repeated once-weekly infusions, and clearance was medium. At the RD, SAR had a large volume of distribution at steady state, and the elimination half-life was approximately 21 hours. Modest antitumor activity was observed: the objective response rate was 10.5% (two of 19) in patients with *MET*-amplified solid tumors; two gastric cancer patients had a partial response and one gastric cancer patient had an unconfirmed partial response. The partial response rate was 14.3% (two of 14) in gastric cancer patients with *MET* amplification. Notably, this preliminary efficacy was observed in tumors that had a high level ($\geq 97\%$) of *MET* amplification.

Studies of other c-Met inhibitors in gastric cancer have shown a variety of efficacy outcomes, and differences are probably related to population heterogeneity and the definition of *MET* gene amplification. Trials of tivantinib, a c-Met inhibitor, and foretinib, a c-Met/vascular endothelial growth factor receptor 2 inhibitor, in unselected gastric cancer patients have shown no objective responses [13, 14]. However, treatment with the multikinase inhibitor crizotinib led to tumor shrinkage in two of four patients with highly *MET*-amplified (*MET:CEP7* > 5) gastroesophageal cancers [15]. Treatment with AMG 337, a selective c-Met kinase inhibitor, led to

Table 3: Pharmacokinetic parameters after single (cycle 1, day 1) or repeated administration (cycle 1, day 22) of SAR, presented as mean ± standard deviation (geometric mean) [coefficient of variation, %]

	SAR dose in cycle 1							
	260 mg/m ²		340 mg/m ²		440 mg/m ²		570 mg/m ²	
	Day 1 N = 6	Day 22 N = 2	Day 1 N = 2	Day 22 N = 3	Day 1 N = 3	Day 22 N = 3	Day 1 N = 21	Day 22 N = 17
C _{max} , ng/mL	4140 ± 1070 (4040) [26]	3550 ± NC (3540) [NC]	4290 ± NC (4280) [NC]	4700 ± 976 (4640) [21]	6390 ± 1010 (6330) [16]	5840 ± 1420 (5710) [24]	6570 ± 1680 (6390) [26]	6330 ± 1270 (6210) [20]
AUC ₀₋₁₆₈ , ng.h/mL	11800 ± 2960 (11500) [25] ^a	12700 ± NC (12700) [NC]	16400 ± NC (16400) [NC]	16500 ± 2390 (16400) [14]	22100 ± NC (21800) [NC] ^b	25300 ± 5220 (25000) [21]	36100 ± 11800 (34400) [33] ^c	35100 ± 14900 (33000) [43]
AUC, ng.h/mL	11800 ± 2950 (11500) [25] ^a	12600 ± NC (12600) [NC]	16400 ± NC (16400) [NC]	16500 ± 2390 (16400) [14]	22000 ± NC (21800) [NC] ^b	25400 ± 5300 (25100) [21]	36200 ± 11800 (34400) [33] ^c	35100 ± 15000 (33100) [43]
CL, L/h	36.5 ± 7.68 (35.8) [21] ^a	32.0 ± NC (32.0) [NC]	33.9 ± NC (33.3) [NC]	33.4 ± 8.01 (32.8) [24]	31.8 ± NC (31.6) [NC] ^b	30.2 ± 7.54 (29.5) [25]	27.8 ± 8.94 (26.3) [32] ^c	28.9 ± 8.48 (27.6) [29]
V _{ss} , L	232 ± 57.5 (227) [25] ^a	186 ± NC (186) [NC]	246 ± NC (242) [NC]	291 ± 52.6 (288) [18]	202 ± NC (200) [NC] ^b	490 ± 366 (413) [75]	241 ± 55.3 (235) [23] ^c	287 ± 105 (271) [37]
t _{1/2z} , h	12.6 ± 6.05 (11.7) [48] ^a	12.6 ± NC (12.6) [NC]	12.9 ± NC (12.9) [NC]	20.6 ± 4.69 (20.2) [23]	12.1 ± NC (12.1) [NC] ^b	27.5 ± 8.24 (26.8) [30]	22.8 ± 9.47 (21.0) [42] ^c	21.2 ± 4.94 (20.6) [23]

^an = 5 (one patient not included in calculation of summary statistics); t_{1/2z} not calculable.

^bn = 2 (one patient not included in calculation of summary statistics); t_{1/2z} not calculable.

^cn = 20 (one patient not included in calculation of summary statistics); t_{1/2z} not calculable.

Cycle 1, day 1: Six patients were excluded from descriptive statistics. Cycle 1, day 22: Five patients were excluded from descriptive statistics. NC, not calculated.

a partial or near complete response in eight (62%) of 13 patients with *MET*-amplified gastroesophageal junction, gastric, or esophageal tumors [16]. All studies used local fluorescence *in situ* hybridization (FISH) to identify whether a tumor was *MET* amplified or not. However, the cut-off for defining *MET* gene amplification differed. The studies of tivantinib and crizotinib considered tumors with a ratio of *MET:CEP7* ≥ 2.2 as *MET* amplified [13, 15], whereas the foretinib study used the cut-off of *MET:CEP7* ≥ 2 to define *MET* amplification [14]. In the study with AMG 337, the cut-off value for defining *MET* amplification is not provided [16].

Combination therapy of c-Met-targeted antibodies and first-line chemotherapeutics in gastric cancer has shown no clear clinical benefit. For example, addition of onartuzumab (an anti-c-Met antibody) to chemotherapy provided no survival advantage, regardless of c-Met expression [17], and rilotumumab (an anti-HGF antibody) combined with chemotherapy failed to show clinical benefit in c-Met-positive gastric or gastroesophageal junction cancer [18].

Preclinical studies provide a wealth of data demonstrating antitumor activity of small-molecule c-Met kinase inhibitors [19–22]. In the clinical setting, our study and some others indicated preliminary efficacy

in gastric cancer patients with *MET* amplification [15, 16]. However, there are several challenges to fully demonstrating the clinical benefit of these agents. The low frequency of *MET* amplification in gastric cancer is a barrier to the inclusion of large-enough numbers of patients in trials. Also, stringent methods for assessing amplification must be used. A recent study using next-generation sequencing revealed that amplification of receptor tyrosine kinases does not correlate with protein expression in gastric cancer, and a comprehensive analysis using both next-generation sequencing and immunohistochemistry may be necessary to adequately select patients [7]. Additional challenges to assess efficacy of c-Met are the definition of gene amplification and intratumoral heterogeneity. Future strategies for c-Met kinase receptor inhibitors evaluation in gastric cancer will require stringent and standardized methods to assess *MET* amplification, will likely use a high threshold for the definition of amplification [23], and will consider amplification clonality in patient selection. A marked heterogeneity of *MET* amplification in distinct tumor lesions within a single gastric cancer patient has been reported, and this heterogeneity may be a key driver of resistance to c-Met inhibitors [24].

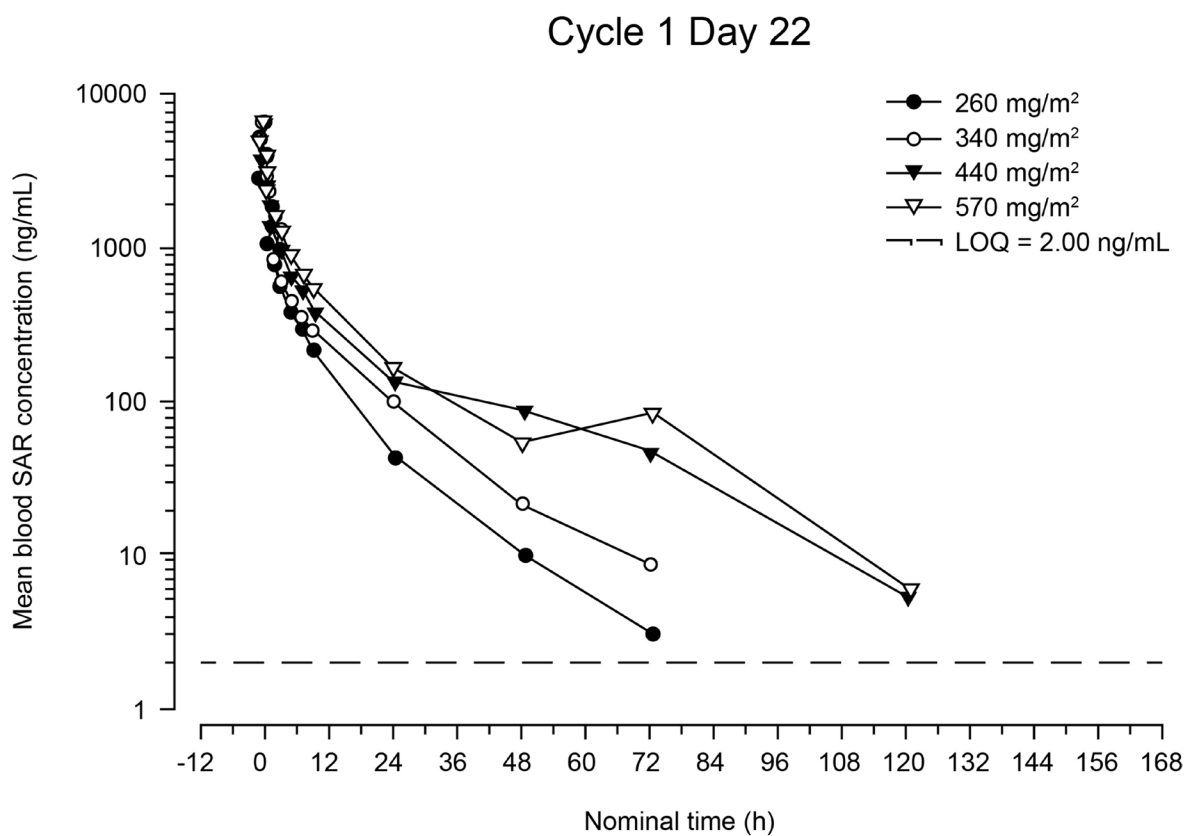
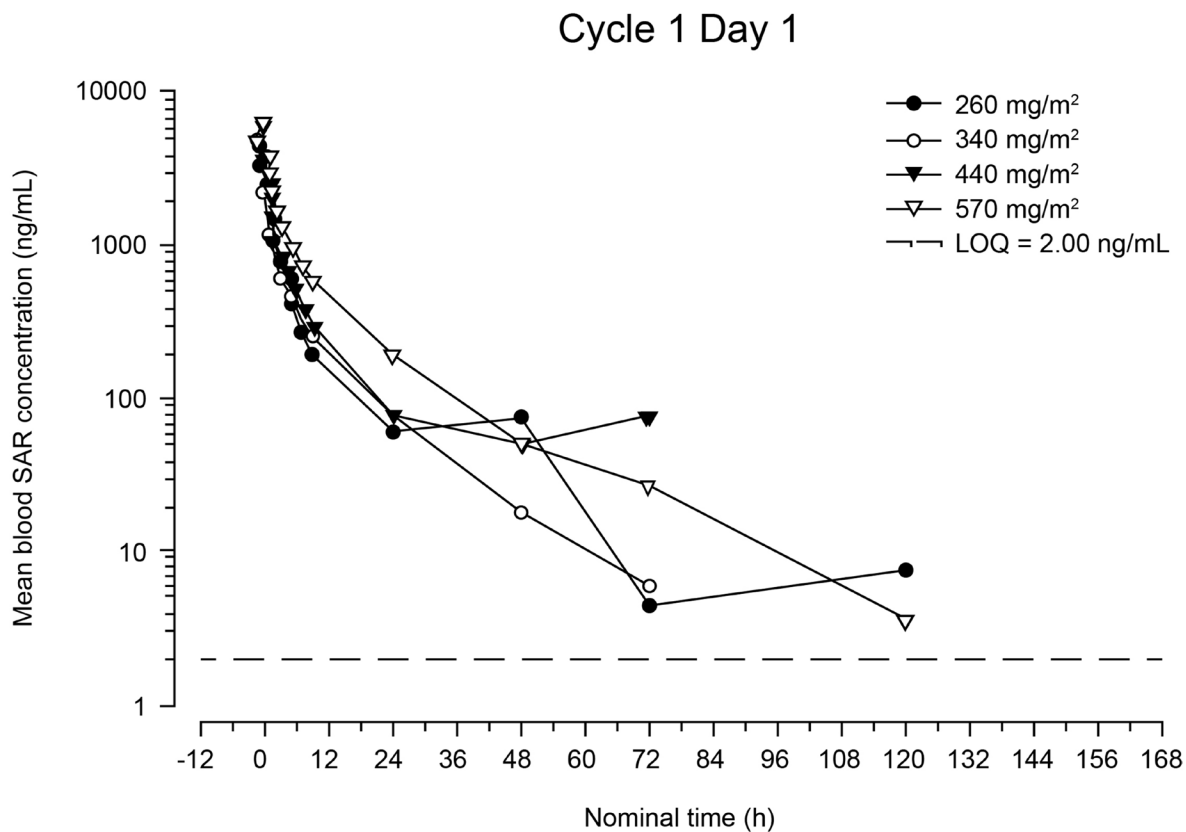


Figure 1: Mean blood concentration of SAR versus time after first infusion (cycle 1, day 1) and fourth infusion (cycle 1, day 22) (semi-logarithmic scale). LOQ = lower limit of quantification.

MATERIALS AND METHODS

Patient population

Asian patients were recruited from multiple centers. Key eligibility criteria were age ≥ 20 years, a solid tumor for which no standard therapy was available (dose-escalation phase) plus measurable disease and *MET* gene amplification (dose-expansion phase), ECOG PS of 0–2, and adequate hematologic, hepatic, and renal function. Exclusion criteria included previous treatment with any c-Met inhibitor, unresolved grade > 1 toxicity (excluding alopecia) related to any prior anticancer therapy, a washout period of < 3 weeks since previous antitumor therapy or investigational treatment (or < 6 weeks if the previous treatment was nitrosourea or mitomycin C), or known hypersensitivity/experienced any AE related to the study-drug excipient Captisol® (Ligand Pharmaceuticals, Lawrence, Kansas, US). All patients provided written informed consent.

Study design and treatment

This was an open-label, phase I, multicenter study consisting of a dose-escalation phase (to determine the MTD of SAR) and a dose-expansion phase (to evaluate the antitumor activity of SAR at the RD in patients with *MET*-amplified tumors, including gastric cancer).

Dose escalation was guided by a Bayesian logistic regression model, an adaptive model with overdose control used to estimate whether the probability of a DLT at each candidate dose level is within a targeted interval of 20–35%. Dose escalation was indicated if the probability of a DLT within the targeted interval at the next level was

greater than at the current level, if the risk of overdosing (DLT rate $> 35\%$) was controlled (i.e., below a pre-specified 25% level). Dose escalation did not proceed until at least three patients had been treated at the lower dose level. The model was run based on DLTs occurring during the first cycle of treatment.

SAR was administered by weekly intravenous infusion on days 1, 8, 15, and 22 of each 28-day cycle. The starting dose was 260 mg/m², and dose increments of 30% were made, to a maximum of 570 mg/m². Treatment continued until disease progression, unacceptable toxicity, or consent withdrawal. Patients were screened within 21 days before the first administration and followed for 30 days after the last administration.

The study was approved by the institutional review board or independent ethics committee of each participating center, and was conducted in accordance with the Declaration of Helsinki and the International Council for Harmonisation Guideline for Good Clinical Practice.

Assessments

The MTD was defined as the dose having the highest probability of generating 20–35% of study drug-related DLTs, and was primarily determined based on DLTs observed in cycle 1. A DLT was defined as grade 4 neutropenia for ≥ 7 consecutive days, febrile neutropenia, grade 4 thrombocytopenia or grade 3 thrombocytopenia with bleeding requiring a transfusion, any grade ≥ 3 nonhematologic event not easily managed or corrected by medical intervention, or SAR-related toxicity resulting in two or more missed doses.

In the absence of DLTs at the highest administered dose, relevant information from the first-in-human study

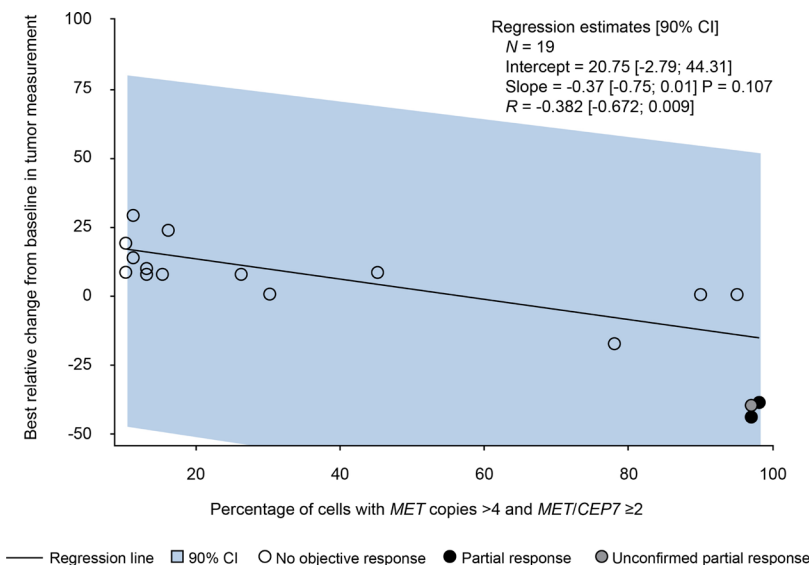


Figure 2: Best relative change from baseline in tumor measurement and level of *MET* amplification (from fluorescence *in situ* hybridization results). CI = confidence interval.

[9] was considered in dose-escalation decisions and determination of the MTD and RD. Safety assessments were conducted at regular intervals, and AEs were graded per the National Cancer Institute's Common Terminology Criteria for Adverse Events, version 4.03. The safety population consisted of all patients exposed to SAR, regardless of the amount of treatment administered.

Blood samples for pharmacokinetic analysis were acquired using dried blood-spot technology on days 1 and 22 of cycle 1 at several time points before, during, and after infusion (up to 168 hours after administration). Drug concentrations were determined by a validated method of liquid chromatography and tandem mass spectrometry (limit of quantification 2 ng/mL). Pharmacokinetic parameters were calculated using a noncompartmental analysis and included the maximum observed blood concentration (C_{max}), AUC from 0 to infinity, AUC_{0-168} , CL, CL after repeated administrations (CL_{ss}), volume of distribution at steady state (V_{ss}), and the half-life associated with the terminal slope ($t_{1/2z}$).

Tumor response was evaluated by the Response Evaluation Criteria In Solid Tumors version 1.1, which define complete response as disappearance of all target lesions, partial response and progressive disease as a minimally 30% decrease or 20% increase, respectively, in the sum of diameters of target lesions, and stable disease as neither sufficient shrinkage to qualify for partial response nor sufficient increase to qualify for progressive disease [25]. Tumor burden was assessed from computerized tomography or magnetic resonance imaging scans performed at baseline, at the end of cycle 1, and every 8 weeks thereafter. Patients evaluable for efficacy received at least one cycle of SAR, with a minimum of two infusions, and had undergone efficacy assessment at baseline and once or more after that.

In the dose-expansion cohort, *MET* amplification in tumor tissue was evaluated by a FISH assay. A tumor was considered *MET* amplified if $\geq 10\%$ of cells had more than four gene copies of *MET* and the *MET:CEP7* ratio was ≥ 2 . Total c-MET protein expression was evaluated by immunohistochemistry, calculating the percentage of tumor cells with an immunohistochemistry score of 2+ or 3+ membrane staining. Level of c-Met expression was considered high if $> 50\%$ of tumor cells had an immunohistochemistry score of 2+ or 3+ membrane staining. Immunohistochemistry was performed on fresh or archival tumor tissue.

Sample sizes and statistical methods

It was estimated that 25–45 patients would be needed to establish the MTD and RD of SAR. A maximum of 25 patients (including 15 with gastric cancer) were to be treated at the MTD (expansion cohort). Descriptive statistics were used to summarize patient characteristics, safety, exposure, and antitumor activity.

Abbreviations

AEs = adverse events; AUC_{0-168} = area under the concentration-time curve for the period covering the dosing interval; CEP7 = centromeric region of chromosome 7; c-Met = tyrosine protein kinase Met; CI = confidence interval; CL = total body clearance; CL_{ss} = total body clearance at steady state; C_{max} = maximum observed blood concentration; DLT = dose-limiting toxicity; ECOG = Eastern Cooperative Oncology Group; LOQ = lower limit of quantification; MET = mesenchymal-epithelial transition factor gene; MTD = maximum tolerated dose; PS = performance status; SAR125844 = SAR; $t_{1/2z}$ = the half-life associated with the terminal slope; TEAE = treatment-emergent adverse event; RD = recommended dose; V_{ss} = volume of distribution at steady state.

Author contributions

All authors participated in study design, study conduct, collection, analysis and interpretation of the data, and critically reviewed and approved this manuscript.

ACKNOWLEDGMENTS

The trial was funded by Sanofi. Editorial and medical writing assistance was provided by Sandra Mendes, PhD, CMPP and Joanne Franklin, PhD, CMPP (TRM Oncology, The Hague, The Netherlands), and funded by Sanofi.

CONFLICTS OF INTEREST

K.S. has received research grants from Sanofi. T.S. has received consulting fees from Eli Lilly and Daiichi Sankyo; consulting fees and honoraria from Chugai Pharmaceutical Co. Ltd, Merck Serono Co. Ltd, Bristol-Myers K.K., Taiho Pharmaceutical Co. Ltd, and Takeda Pharmaceutical Co. Ltd; and departmental research grants from Chugai Pharmaceutical Co. Ltd, ONO Pharmaceutical Co. Ltd, and Yakult Honsha Co. Ltd. S.A., C.G., and M.H. are employees of Sanofi, and Y.-J.B. serves in an advisory and consulting role for Sanofi. T.K. received honoraria from Chugai Pharmaceutical Co. Ltd, Merck Serono Co. Ltd, Eli Lilly Japan K.K., Taiho Pharmaceutical Co. Ltd, and Takeda Pharmaceutical Co. Ltd. Our department is an endowment department, supported with an unrestricted grant from Chugai Pharmaceutical Co. Ltd, ONO Pharmaceutical Co. Ltd, and Yakult Honsha Co. Ltd. T.M.K., M.G., J.H.A., H.S.K., S.H., T.D., and T.Y. have no conflicts of interest to disclose.

FUNDING

This work was supported by Sanofi, which provided financial support for the study and participated in the

design and conduct of the study and in the analysis and interpretation of data. Sanofi was involved in the writing, review, and approval of the manuscript.

REFERENCES

1. Liu X, Newton RC, Scherle PA. Developing c-MET pathway inhibitors for cancer therapy: progress and challenges. *Trends Mol Med.* 2010; 16:37–45.
2. Yu S, Yu Y, Zhao N, Cui J, Li W, Liu T. C-Met as a prognostic marker in gastric cancer: a systematic review and meta-analysis. *PLoS One.* 2013; 8:e79137.
3. An X, Wang F, Shao Q, Wang FH, Wang ZQ, Wang ZQ, Chen C, Li C, Luo HY, Zhang DS, Xu RH, Li YH. MET amplification is not rare and predicts unfavorable clinical outcomes in patients with recurrent/metastatic gastric cancer after chemotherapy. *Cancer.* 2014; 120:675–682.
4. Matsusaka S, Kobunai T, Yamamoto N, Chin K, Ogura M, Tanaka G, Matsuoka K, Ishikawa Y, Mizunuma N, Yamaguchi T. Prognostic impact of KRAS mutant type and MET amplification in metastatic and recurrent gastric cancer patients treated with first-line S-1 plus cisplatin chemotherapy. *Genes Cancer.* 2016; 7:27–35. <https://doi.org/10.18632/genesandcancer.96>.
5. Bass AJ, Thorsson V, Shmulevich I, Reynolds SM, Miller M, Bernard B, Hinoue T, Laird PW, Curtis C, Shen H, Weisenberger DJ, Schultz N, Shen R, et al, and Cancer Genome Atlas Research Network. Comprehensive molecular characterization of gastric adenocarcinoma. *Nature.* 2014; 513:202–209.
6. Cristescu R, Lee J, Nebozhyn M, Kim KM, Ting JC, Wong SS, Liu J, Yue YG, Wang J, Yu K, Ye XS, Do IG, Liu S, et al. Molecular analysis of gastric cancer identifies subtypes associated with distinct clinical outcomes. *Nat Med.* 2015; 21:449–456.
7. Kuboki Y, Yamashita S, Niwa T, Ushijima T, Nagatsuma A, Kuwata T, Yoshino T, Doi T, Ochiai A, Ohtsu A. Comprehensive analyses using next-generation sequencing and immunohistochemistry enable precise treatment in advanced gastric cancer. *Ann Oncol.* 2016; 27:127–133.
8. Egile C, Kenigsberg M, Delaisi C, Bégassat F, Do-Vale V, Mestadier J, Bonche F, Bénard T, Nicolas JP, Valence S, Lefranc C, Francesconi E, Castell C, et al. The selective intravenous inhibitor of the MET tyrosine kinase SAR125844 inhibits tumor growth in MET-amplified cancer. *Mol Cancer Ther.* 2015; 14:384–394.
9. Angevin E, Spitaleri G, Hollebecque A, De Pas T, Soria JC, Harnois M, Mazuir F, Assadourian S, De Marinis F. A first-in-human (FIH) phase I study of SAR125844, a novel selective MET kinase inhibitor, in patients (pts) with advanced solid tumors: dose escalation results. *J Clin Oncol.* 2014; 32 (5_suppl):2506–2506.
10. Tabernero J, Elez ME, Herranz M, Rico I, Prudkin L, Andreu J, Mateos J, Carreras MJ, Han M, Gifford J, Credi M, Yin W, Agarwal S, et al. A pharmacodynamic/pharmacokinetic study of ficlatuzumab in patients with advanced solid tumors and liver metastases. *Clin Cancer Res.* 2014; 20:2793–2804.
11. Hong DS, LoRusso P, Hamid O, Beaupre DM, Janku F, Khan R, Kittaneh M, Loberg RD, Amore B, Caudillo I, Hwang YC, Tang R, Ngarmchamnanrith G, et al. First-in-human study of AMG 337, a highly selective oral inhibitor of MET, in adult patients (pts) with advanced solid tumors. *J Clin Oncol.* 2014; 32:2508–2508.
12. Shapiro GI, McCallum S, Adams LM, Sherman L, Weller S, Swann S, Keer H, Miles D, Müller T, Lorusso P. A phase I dose-escalation study of the safety and pharmacokinetics of once-daily oral foretinib, a multi-kinase inhibitor, in patients with solid tumors. *Invest New Drugs.* 2013; 31:742–750.
13. Kang YK, Muro K, Ryu MH, Yasui H, Nishina T, Ryoo BY, Kamiya Y, Akinaga S, Boku N. A phase II trial of a selective c-Met inhibitor tivantinib (ARQ 197) monotherapy as a second- or third-line therapy in the patients with metastatic gastric cancer. *Invest New Drugs.* 2014; 32:355–361.
14. Shah MA, Wainberg ZA, Catenacci DV, Hochster HS, Ford J, Kunz P, Lee FC, Kallender H, Cecchi F, Rabe DC, Keer H, Martin AM, Liu Y, et al. Phase II study evaluating 2 dosing schedules of oral foretinib (GSK1363089), cMET/VEGFR2 inhibitor, in patients with metastatic gastric cancer. *PLoS One.* 2013; 8:e54014.
15. Lennerz JK, Kwak EL, Ackerman A, Michael M, Fox SB, Bergethon K, Lauwers GY, Christensen JG, Wilner KD, Haber DA, Salgia R, Bang YJ, Clark JW, et al. MET amplification identifies a small and aggressive subgroup of esophagogastric adenocarcinoma with evidence of responsiveness to crizotinib. *J Clin Oncol.* 2011; 29:4803–4810.
16. Kwak EL, LoRusso P, Hamid O, Janku F, Kittaneh M, Catenacci DV, Chan E, Bekaii-Saab TS, Amore B, Hwang YC, Tang R, Ngarmchamnanrith G, Hong DS. Clinical activity of AMG 337, an oral MET kinase inhibitor, in adult patients (pts) with MET-amplified gastroesophageal junction (GEJ), gastric (G), or esophageal (E) cancer. *J Clin Oncol.* 2015; 33:1–1.
17. Shah MA, Bang YJ, Lordick F, Tabernero J, Chen M, Hack SP, Phan SC, Shames DS, Cunningham D. METGastric: a phase III study of onartuzumab plus mFOLFOX6 in patients with metastatic HER2-negative (HER2-) and MET-positive (MET+) adenocarcinoma of the stomach or gastroesophageal junction (GEC). *J Clin Oncol.* 2015; 33:abstract 4012.
18. Cunningham D, Tebbutt NC, Davidenko I, Murad AM, Al-Batran SE, Ilson DH, Tjulandin S, Gotovkin E, Karaszewska B, Bondarenko I, Tejani MA, Udrea AA, Tehfe MA, et al. Phase III, randomized, double-blind, multicenter, placebo (P)-controlled trial of rilotumumab (R) plus epirubicin, cisplatin and capecitabine (ECX) as first-line therapy in patients (pts) with advanced MET-positive (pos) gastric or gastroesophageal junction (G/GEJ) cancer: RILOMET-1 study. *J Clin Oncol.* 2015; 33:abstract 4000.

19. Hughes PE, Rex K, Caenepeel S, Yang Y, Zhang Y, Broome MA, Kha HT, Burgess TL, Amore B, Kaplan-Lefko PJ, Moriguchi J, Werner J, Damore MA, et al. *In vitro* and *in vivo* activity of AMG 337, a potent and selective MET kinase inhibitor, in MET-dependent cancer models. *Mol Cancer Ther*. 2016; 15:1568–1579.
20. Gavine PR, Ren Y, Han L, Lv J, Fan S, Zhang W, Xu W, Liu YJ, Zhang T, Fu H, Yu Y, Wang H, Xu S, et al. Volitinib, a potent and highly selective c-Met inhibitor, effectively blocks c-Met signaling and growth in c-MET amplified gastric cancer patient-derived tumor xenograft models. *Mol Oncol*. 2015; 9:323–333.
21. Medova M, Pachon B, Streit B, Blank-Liss W, Francica P, Stroka D, Keogh A, Aebersold DM, Blaukat A, Blatt F, Zimmer Y. The novel ATP-competitive inhibitor of the MET hepatocyte growth factor receptor EMD1214063 displays inhibitory activity against selected MET-mutated variants. *Mol Cancer Ther*. 2013; 12:2415–2424.
22. Blatt F, Faden B, Friese-Hamim M, Knuehl C, Wilm C, Fittschen C, Gradler U, Meyring M, Dorsch D, Jaehrling F, Pehl U, Stieber F, Schadt O, et al. EMD 1214063 and EMD 1204831 constitute a new class of potent and highly selective c-Met inhibitors. *Clin Cancer Res*. 2013; 19:2941–2951.
23. Pearson A, Smyth E, Babina IS, Herrera-Abreu MT, Tarazona N, Peckitt C, Kilgour E, Smith NR, Geh C, Rooney C, Cutts R, Campbell J, Ning J, et al. High-level clonal FGFR amplification and response to FGFR inhibition in a translational clinical trial. *Cancer Discov*. 2016; 6:838–851.
24. Kwak EL, Ahronian LG, Siravegna G, Mussolin B, Godfrey JT, Clark JW, Blaszkowsky LS, Ryan DP, Lennerz JK, Iafrate AJ, Bardelli A, Hong TS, Corcoran RB. Molecular heterogeneity and receptor coamplification drive resistance to targeted therapy in MET-amplified esophagogastric cancer. *Cancer Discov*. 2015; 5:1271–1281.
25. Eisenhauer EA, Therasse P, Bogaerts J, Schwartz LH, Sargent D, Ford R, Dancey J, Arbuck S, Gwyther S, Mooney M, Rubinstein L, Shankar L, Dodd L, et al. New response evaluation criteria in solid tumors: revised RECIST guideline (version 1.1). *Eur J Cancer*. 2009; 45:228–247.