

A novel co-operative mechanism linking TGF β and Lyn kinase activation to imatinib resistance in chronic myeloid leukaemia cells

Paul G. Smith¹, Hideo Tanaka², and Andrew Chantry¹

¹ School of Biological Sciences, University of East Anglia, Norwich, UK

² Department of Hematology, Hiroshima City Asa Hospital, Asakita-ku, Hiroshima, Japan.

Correspondence to: Andrew Chantry, **email:** a.chantry@uea.ac.uk

Keywords: Transforming growth factor- β , Smads, ubiquitin, c-cbl, Lyn, leukaemia

Received: May 16, 2012,

Accepted: May 22, 2012,

Published: May 23, 2012

Copyright: © Smith et al. This is an open-access article distributed under the terms of the Creative Commons Attribution License, which permits unrestricted use, distribution, and reproduction in any medium, provided the original author and source are credited.

ABSTRACT:

The advent of a mechanism specific inhibitor imatinib, targeting Bcr-Abl kinase, has paved the way for new treatment strategies in chronic myeloid leukaemia (CML). However, resistance to imatinib is common in patients and has recently been linked to both transforming growth factor- β (TGF β) and elevated Lyn kinase activity, although molecular mechanisms remain largely unknown. Here, using leukaemic MYL cell lines derived from CML patients, we show that TGF β plays a key role in imatinib-resistance via direct effects on Lyn ubiquitination and turnover that results in bursts of Lyn kinase activity, and identify c-cbl as a candidate E3 ubiquitin ligase. Furthermore, blockade of TGF β signalling activity with the TGF β receptor kinase inhibitor SB431542 significantly reduces Lyn turnover and activation, and subsequently enhances imatinib-mediated CML cell death in a proteasomal-dependent manner. Collectively, our data reveals novel co-operative mechanisms in CML involving TGF β and Lyn kinase linked to proteasome function and ubiquitination, and thus supports therapeutic approaches that target TGF β pathway activity as a strategy for overcoming imatinib-resistance in CML.

INTRODUCTION

Chronic myeloid leukaemia (CML) is a disease of haematopoietic stem cells and originates from a specific chromosomal transfer event that generates a hybrid Bcr-Abl oncoprotein with tyrosine-kinase activity and cell transforming capacity [1]. Recently, a Bcr-Abl kinase inhibitor (Imatinib, Gleevec or STI571) has been used to treat CML with some success [2]. However, patients become resistant mainly due to a small group of immature Bcr-Abl +ve stem cells in the bone marrow that have stopped dividing, and become refractory to the effects of an inhibitor which is only effective against growing cells [3]. Mechanisms associated with imatinib-resistance include Bcr-Abl point mutations and increased Bcr-Abl protein expression [4, 5]. In addition, Bcr-Abl-independent mechanisms of resistance have been proposed [6], including elevated P-glycoprotein drug efflux [7], and the recruitment of other signalling cascades [8]. Most notably, several recent studies highlight an emerging role for Lyn kinase overexpression and activation in the development

of imatinib-resistance in CML [9-12], and activated Lyn results in elevated levels of the anti-apoptotic protein Bcl-2, which protects CML cells from imatinib-mediated cell lethality [13]. Furthermore, in CML cells, knockdown of elevated Lyn expression by siRNA resulted in increased apoptosis and enhanced imatinib sensitivity [14].

At present, the precise molecular mechanisms responsible for increased Lyn expression and activation in CML have not been established, although it is likely to involve induction and/or re-wiring of other signalling pathways linked to haematopoietic cell function. A prime candidate in this regard is transforming growth factor- β (TGF β), which is known to play a vital role in maintaining the growth and differentiation balance in haematopoietic cells [15]. In general, TGF β is a robust inhibitor of committed progenitor cell function, and autocrine production of TGF β maintains haematopoietic stem cell quiescence [16]. Several recent studies have attempted to unravel the effects TGF β on leukaemia cell proliferation. A TGF β /FOXO/Akt signalling axis was found to be responsible for imatinib resistance in a CML stem cell

population and it was shown that pre-treatment of CML stem cells with the TGF β receptor inhibitor LY364947 efficiently activated Akt and suppressed FOXO-induced cell cycle arrest and apoptosis [17]. Furthermore, this study demonstrated that combined treatment with LY364947 and Imatinib significantly reduced lethality in a CML mouse model and decreased stem cell frequency. In support of these data, TGF β has also been reported as a candidate niche factor to maintain haematopoietic stem dormancy and hibernation [18]. Collectively, these data suggest that blockade of TGF β signalling activity could potentially promote efficient eradication of residual CML stem cells, a notion that is also supported the finding that Bcr-Abl enhances TGF β signalling activity in CML cells [19].

Interestingly, previous studies have implicated a role for TGF β in regulating Lyn function, and TGF β stimulation over a 30 minutes timeframe caused a rapid decrease in cellular levels in Lyn together with a decrease in Lyn kinase activity in a prostate cancer cell line [20]. Here, we investigated inter-connections between TGF β and Lyn in the MYL cell line derived from a CML patient and find that TGF β stimulation drives rapid ubiquitination and proteasomal turnover of Lyn. Interestingly, prolonged stimulation results in Lyn protein replenishment and a significantly elevated re-bounce in the level of Lyn kinase activity. Furthermore, we identify the E3 ubiquitin ligase c-cbl as a candidate intermediate that drives TGF β -mediated Lyn turnover/activation, and show that blocking TGF β signalling activity reduces Lyn activity and concomitantly sensitizes CML cells to imatinib-mediated cell death. Therefore, based on this new mechanistic insight we propose that blockade of TGF β signalling activity in combination with the Bcr-Abl inhibitor Imatinib could provide a basis for the treatment of drug-resistant CML.

RESULTS AND DISCUSSION

TGF β -induced Lyn ubiquitination generates bursts of Lyn kinase activity in CML cells

Since previous studies have implicated a role for both TGF β activity and Lyn kinase overexpression in CML, we examined whether TGF might exert a direct influence on Lyn function in MYL cells derived from a chronic phase CML patient [10]. Initially, we treated MYL cells with TGF β and probed cellular lysates by western blotting with a Lyn antibody to monitor changes in Lyn protein levels. Unexpectedly, we found a significant decrease in the levels of Lyn after 30 minutes followed by a significant increase in Lyn following prolonged 6 hours stimulation (Figure 1A). Interestingly, in the presence of the general ubiquitin-proteasome system inhibitor MG132

we observed an increase in higher molecular weight Lyn reactive bands that was not seen in the presence of the type I TGF β receptor kinase inhibitor SB431542 (Figure 1A). Quantification also indicates that this rapid decrease and then recovery in Lyn protein levels was significantly attenuated in cells incubated with MG132 (Figure 1B).

Since the high molecular weight Lyn reactive species were seen primarily in the presence of MG132, we next tested whether they might represent ubiquitinated Lyn species. There is a clear induction of high molecular weight polyubiquitinated Lyn protein that peaks at 1 hour of stimulation, and this is not seen in cells that were pre-treated with 10 μ M SB431542 (Figure 1C). Next, we examined whether prolonged stimulation of MYL cells with TGF β affects Lyn protein kinase activity using a specific immune kinase assay and poly(Glu-Tyr) as substrate. Following 30 minutes TGF β stimulation, Lyn kinase activity declines rapidly but then recovers again to peak after 3 hours (Figure 1D). This influence of TGF β on Lyn kinase activity was confirmed by treatment of cells in the presence of 10 μ M SB431542 in which there is a slow but steady drop in Lyn activity (Figure 1D).

This induction of Lyn ubiquitination seen endogenously in MYL cells was then confirmed using ectopic overexpression experiments (Figure 2A). There are a number of potential E3 Ubiquitin ligases that might connect cell surface TGF β receptor activation to Lyn ubiquitination. Previous studies highlighted dysregulated TGF β signalling in *cbl*^{-/-} cells [21], as well as oncogenic *cbl* mutations in several myeloid malignancies [22], and *c-cbl* is known to interact with Lyn and drive its Lyn polyubiquitination [23]. Interestingly, we find that TGF β can stimulate *cbl*-mediated Lyn ubiquitination in a dose-dependent manner (Figure 2B), as well as induce *c-cbl* mRNA expression (Figure 2C). Therefore, we suggest that mechanistically TGF β drives bursts of Lyn ubiquitination and turnover via inducing *c-cbl* transcription and expression.

Inhibition of type TGF β receptor kinase enhances Imatinib mediated CML cell death

Since TGF β is able to drive bursts of Lyn kinase activity, and elevated Lyn kinase has been implicated in imatinib-resistance, we next investigated whether blockade of TGF β signaling might influence CML cell growth and sensitivity to Imatinib. Cell Cycle analysis indicates that addition of TGF β increases the proportion of MYL cells in G0/G1 phase by 5%, concomitant with a 5% reduction in the S phase population (Figure 3A). In the presence of SB431542 alone there is a decrease in the G0/G1 cell population and a 2% increase in cells in S phase indicative also of relatively high autocrine TGF β activity, and an increase of almost 6% in the G2/M population compared to TGF β treated cells (Figure 3A). Therefore,

it is apparent that inhibition of TGF β signalling in MYL cells encourages progression through the cell cycle, an important observation in the context of dual treatment approaches since imatinib is only effective against dividing cells. We then used MTS assays to assess whether combined treatment with Imatinib and SB431542 could influence MYL cell survival. In the presence of Imatinib, MYL cell survival gradually falls with increasing doses up to 0.1 μ M, and combined with SB431542 which in this instance blocks autocrine TGF β signaling activity there is a significant decrease in cell survival (Figure 3B). We then examined whether SB431542 enhanced Imatinib-mediated cell death using Poly (ADP-ribose) polymerase (PARP) cleavage assays to assess cells undergoing apoptosis. There is a significant reduction in un-cleaved PARP (113kDa) in MYL cells exposed for 12 hours to both SB431542 and Imatinib combined with a clear increase

in cleaved PARP at 29kDa (Figure 3C). Finally, we used an alternative assay for apoptosis based on changes in Annexin-V staining as monitored using flow cytometry. Here, cells were pre-treated in the presence/absence TGF β for 1hour to drive Lyn turnover, and combination treatment of imatinib with SB431542 significantly enhances apoptosis compared to either imatinib or SB treatment alone (Figure 3D). Furthermore, we find that pre-treatment with MG132 attenuates the combined effect of imatinib and SB431542 implicating the ubiquitin proteasome system in this dual additive response, although this may be an indirect effect not necessarily related to TGF β -induced Lyn ubiquitination.

In summary, we have shown for the first time direct inter-connections between TGF β and Lyn kinase in a cell line derived from a CML patient. We find that prolonged TGF β stimulation drives ubiquitination and

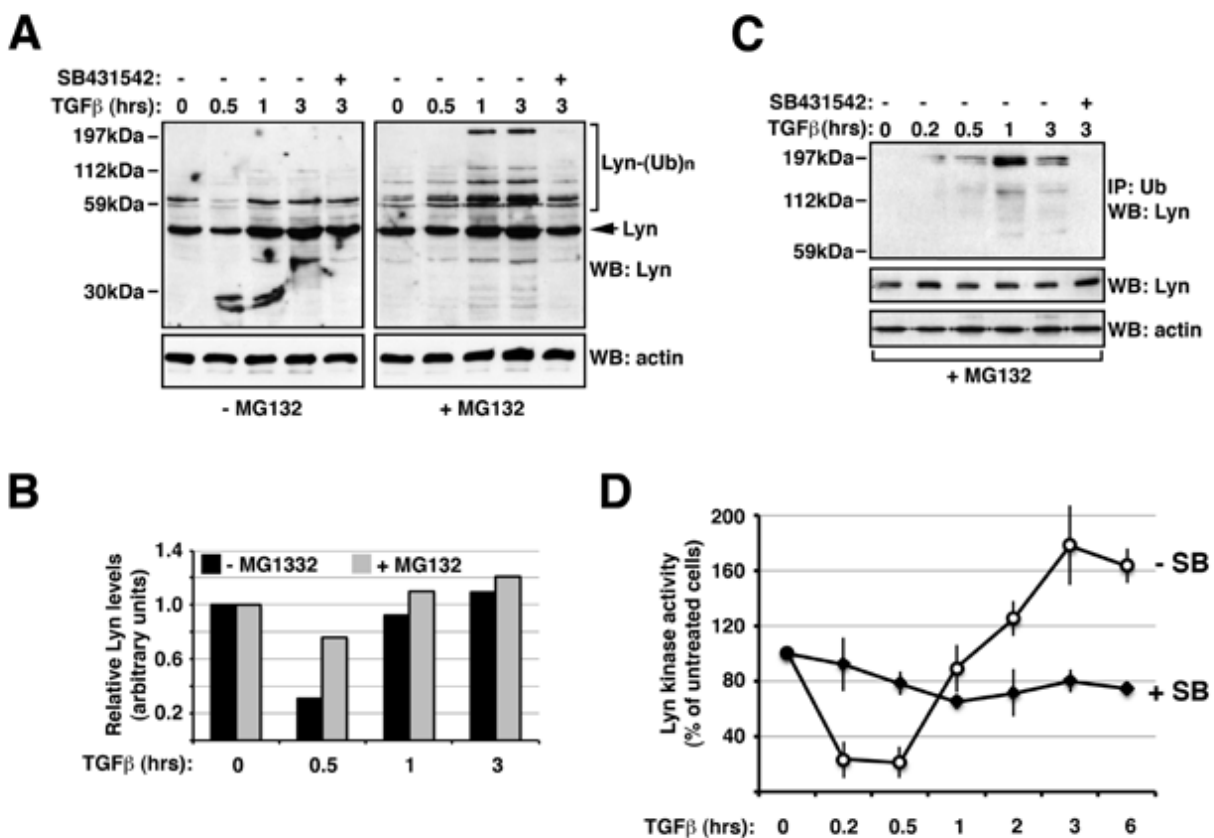


Figure 1: TGF β -induced Lyn ubiquitination generates a burst of Lyn kinase activity in CML cells. (A) MYL cells were serum starved overnight in 0.5% serum-containing media before treatment in the presence/absence MG132 with 1ng/ml TGF β and/or 10 μ M SB431542 as indicated. Cells were lysed and Western blots probed with anti-Lyn and anti- β -Actin antibodies. (B) Blots in Figure 1A were analysed by densitometric scanning using ImageJ image analysis software, and data are representative of three experiments. (C) MYL cells were treated with 1ng/ml TGF β and/or 10 μ M SB431542 in the presence of MG132 as indicated, and lysates immunoprecipitated with anti-polyubiquitin antibody were separated by Western blotting and probed with anti-Lyn or anti-actin antibodies. (D) MYL cells were treated with 1ng/ml TGF β in the presence/absence 10 μ M SB431542 as indicated, lysates immunoprecipitated with anti-Lyn and immune complexes assayed for Lyn kinase assay using ATP- γ P³³ and poly(Glu-Tyr) as substrate as described in Materials and Methods. Data are representative of two independent experiments performed in triplicate, and expressed as a specific activity in relation to total lyn protein levels as determined by anti-Lyn western blotting.

rapid turnover of Lyn resulting in Lyn replenishment and bursts of Lyn kinase activity. Furthermore, we show that inhibiting endogenous TGF β signalling reduces Lyn activity and concomitantly encourages exit from cell cycle arrest and sensitizes CML cells to imatinib-mediated cell death. Therefore, our findings highlight new mechanistic insight linked to CML disease resistance, and suggest that the use of TGF β inhibitors in combination with Imatinib to overcome drug-resistant CML clearly warrants further consideration. Our future work will be focussed on extending our findings to a range of primary cells from imatinib-sensitive and resistant patients to confirm clinical significance, and understanding further *in vivo* mechanisms linked to CML pathology as well as characterising specific E3 ubiquitin ligases responsible for TGF β -induced Lyn ubiquitination.

MATERIALS AND METHODS

Cell lines, reagents, treatments, and western blot analysis

MYL cells were maintained as described previously in RPMI supplemented with 10% Foetal Bovine Serum, 1% Penicillin Streptomycin (p/s), glutamine (200mM). HEK-293 cells were maintained in Dulbecco's modified Eagle's medium containing 10% foetal bovine serum, 1% Penicillin Streptomycin (p/s), and glutamine (200mM). Lyn cDNA cloned into a pBOS-Flag expression vector was obtained from Hiroshi Murakami (Okayama University), c-cbl expression vector from Stan Lipkowitz, National Institutes of Health, Maryland, and Ubiquitin-His from

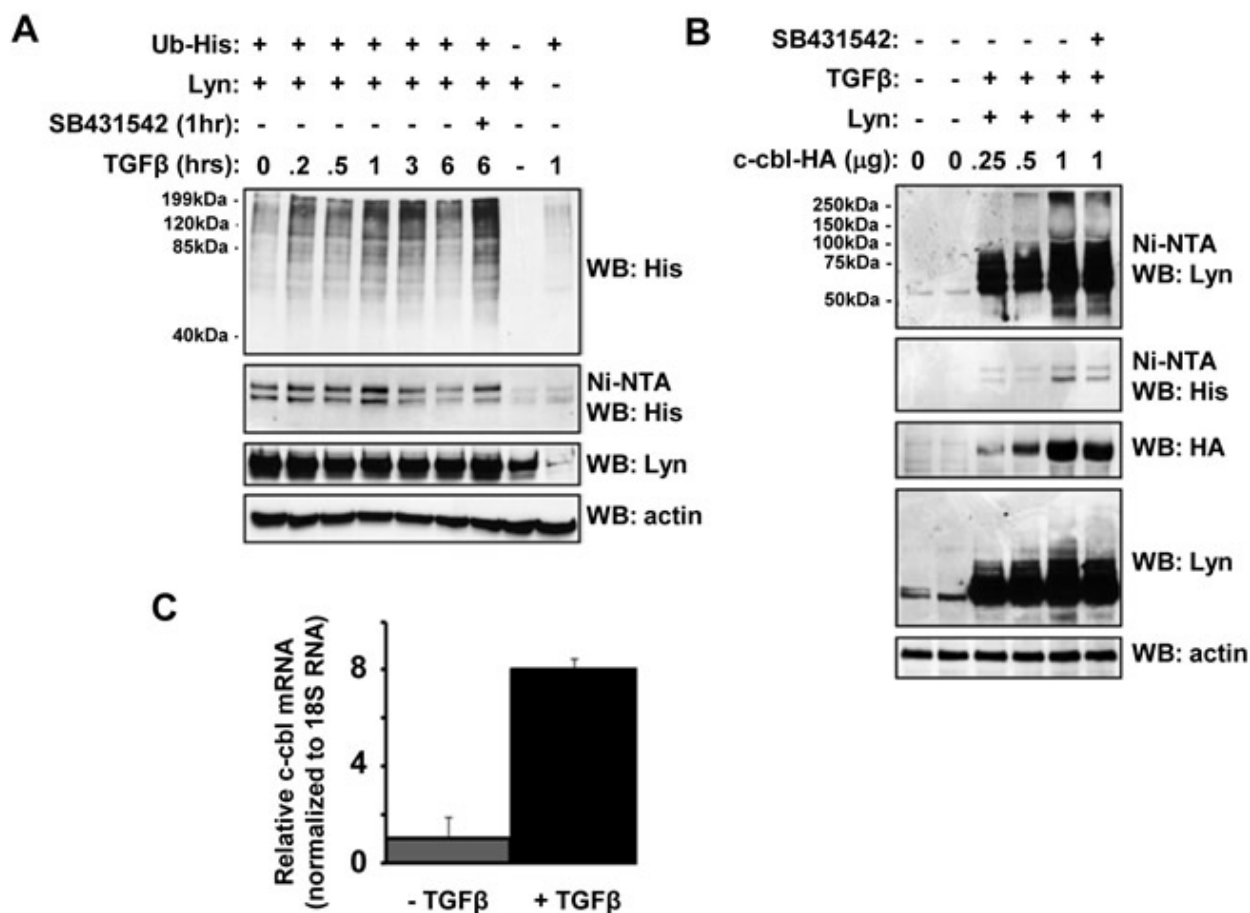


Figure 2: TGF β stimulates c-cbl-dependent Lyn ubiquitination. (A) TGF β induces Lyn ubiquitination. HEK293T cells were co-transfected with expression plasmids for Lyn and His-tagged Ubiquitin. Cells were put into 2% FCS-containing media overnight before TGF β treatment (1ng/ml) for a range of time between 0-360 minutes, or 10 μ M SB431542. Cell lysates were incubated overnight with nickel-NTA beads, and bound proteins eluted with Laemmli buffer. Samples were separated by SDS-PAGE and Western blots probed with anti-His, anti-Lyn or anti-actin antibodies as indicated. (B) HEK293T cells were transfected with Lyn, c-Cbl and Ub plasmids as indicated. Cells were maintained in 2% FCS media post-transfection before TGF β (1ng/ml) or SB431542 (10 μ M) stimulation for 60 minutes. Lysates were incubated with Nickel-NTA beads, and bound proteins eluted with Laemmli buffer. Samples were separated by SDS-PAGE and Western blots probed with anti-His, anti-Lyn or anti-actin antibodies as indicated. (C) MYL cells were stimulated with TGF β (1ng/ml) for 60minutes. RNA was isolated, reverse transcribed, and 5ng cDNA utilised as template DNA in qRT-PCR using primers specific for c-cbl. Data represent triplicate samples, and are normalised against 18S RNA as an internal control.

Sylvie Urbe (Liverpool University, UK). These plasmids were used for transient transfection of HEK-293 cells using LipoD transfection reagent (SignaGen Laboratories, USA). Imatinib mesylate (STI571, Gleevec) was obtained from Novartis Pharmaceuticals (Basel, Switzerland), and SB431542 (TGF β -RI inhibitor) from Tocris Ltd. Antibodies used included anti-Lyn (New England Biolabs), anti-ubiquitin (Sigma), anti-Smad3 and anti-phospho-Smad3 (BD transduction laboratories), anti-His (Amersham Biosciences), anti-PARP (Abcam), anti-HA (Roche) and anti- β -actin (Sigma). Secondary antibodies were HRP-conjugated goat anti-rabbit or goat anti-mouse (Sigma). Cell lysis, SDS-PAGE and western blotting performed as described previously [19, 24].

Lyn kinase assays

Lyn kinase activity was assessed by immunoprecipitation of Lyn followed by an *in vitro* kinase assay of this immune complex in the presence of ATP- γ P³³

as described previously [25].

Ubiquitination studies

Transfected cells treated with either 20 μ M MG132 for 5 hours in DMEM medium containing 2 % FCS and treated +/- 5ng/ml TGF β for 1hr, washed in cold PBS, lysed in 1% v/v Igepal-630, 50mM Tris pH 8.0, 150mM NaCl, 10% v/v glycerol, 5mM EDTA 1mM NaF, 1mM Na₃VO₄ and protease inhibitors. Lysates were cleared by centrifugation and incubated with 0.5 μ g high affinity anti-HA or anti-Ub antibody and 20 μ l of protein-G agarose (Sigma) overnight at 4°C. Immune-complexes were harvested (2000 rpm; 30 sec), and repeatedly washed using 0.1% NP-40 LB. Immunoprecipitates were resuspended in 15 μ l Laemelli buffer (+10mM DTT), and analysed by Western blotting.

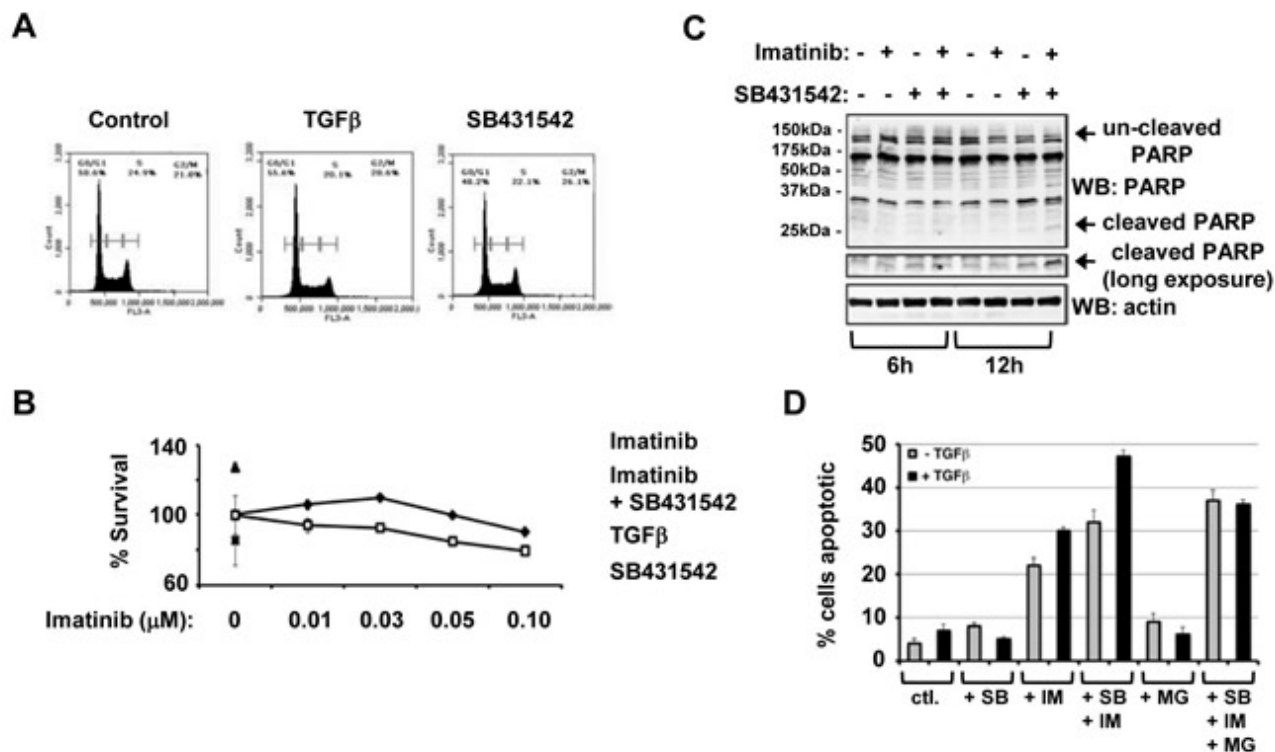


Figure 3: Inhibition of type TGF β receptor kinase enhances Imatinib mediated CML cell death. (A) MYL cells were synchronised with a double thymidine block, then treated with either TGF β or SB431542 for 12 hours. Cells were fixed in 70% ethanol, incubated with propidium iodide and cell cycle status analysed by flow cytometry. Data is representative of three separate experiments and was analysed using CFlow Plus software. (B) MYL cells were serum starved in 0.5% serum containing media overnight and treated with either a range of Imatinib concentrations between 0-0.1 μ M or in combination with SB431542, or with TGF β and SB431542 alone as controls. Cell viability was assessed using MTS assays. (C) MYL cells were serum starved overnight in 0.5% serum containing media before treatment with 0.3 μ M Imatinib, 10 μ M SB431542 or a combination of the two for 6 or 12 hours. Lysates were separated through SDS-PAGE, and subsequent Western blots were probed with anti-PARP or anti-actin antibodies. (D) MYL cells were pre-treated +/- 1ng/ml TGF β followed by combination treatments with 0.3 μ M Imatinib, 10 μ M SB431542, 20 μ M MG132 or combinations of these as indicated, and cells were incubated for an additional 24hours and cellular apoptosis measured by annexin-V and propidium iodide staining followed by flow cytometry analysis. Data are representative of two separate experiments performed in triplicate.

Quantitative real-time qPCR

RNA was extracted using the SV Total RNA Isolation System (Promega) according to the manufacturer's instructions. To generate cDNA, 0.1µg of RNA was reverse transcribed per reaction using reverse transcriptase (Amersham) and random primers (Invitrogen) according to standard protocols, and gene expression was normalized against the housekeeping gene 18S. The reaction mix was set up as described previously [26], and cycling conditions were 2 minutes at 50°C, 10 minutes at 95°C, 15 seconds at 95°C repeated 40 times and 60°C for 1 minute. The c-Cbl primer/probes were obtained from Applied Biosystems (Hs00231981_m1), and reactions were performed using an ABI PRISM 7500 thermocycler (Applied Biosystems).

Cell cycle analysis

Cell cycle status was assessed following the staining of cells with propidium iodide (PI) and flow cytometry analysis. Stained cells were counted on a FACScan flow cytometer (Becton Dickinson), and the data obtained was analysed using CFlow Plus as described previously [19].

MTS and apoptosis assays

Approximately 5000 cells were seeded into 96 well plates in a volume of 100µl per well and grown overnight in 0.5% FCS-containing media. Cells were pre-treated accordingly, with SB431542 (10µM) or imatinib (10µM) prior to the addition of TGFβ. Cells were then left at 37°C for 48 hours, and 10µl of the MTS solution (Promega) was added to each well. Cells were further incubated for 3 hours before absorbance readings were taken at 490nm. When using flow cytometry to measure apoptosis, cell samples were collected by centrifugation (500g; 5min), then resuspended and stained with Annexin-V and PI dye, followed by detection.

ACKNOWLEDGEMENTS

AC would like to thank the Elimination of Leukaemia Fund for providing a PhD Studentship to support Paul Smith, and The Boston Cancer and Leukaemia Fund and The James Tudor Foundation for additional financial support.

Editorial Note

The paper was accepted in part based on re-evaluation of peer-reviews obtained in previous submissions in other journals as well as authors' responses and revisions, and internal editorial review and evaluation.

REFERENCE

1. Melo JV, Barnes DJ. Chronic myeloid leukaemia as a model of disease evolution in human cancer. *Nat Rev Cancer*. 2007;7(6):441-453.
2. Buchdunger E, Zimmermann J, Mett H, Meyer T, Muller M, Druker BJ, Lydon NB. Inhibition of the Abl protein-tyrosine kinase in vitro and in vivo by a 2-phenylaminopyrimidine derivative. *Cancer Res*. 1996;56:100-104.
3. Copland M, Fraser AR, Harrison SJ, Holyoake TL. Targeting the silent minority: emerging immunotherapeutic strategies for eradication of malignant stem cells in chronic myeloid leukaemia. *Cancer Immunol. Immunother*. 2005; 54:297-306.
4. Gorre ME, Mohammed M, Ellwood K, Hsu N, Paquette R, Rao PN, Sawyers CL. Clinical resistance to STI-571 cancer therapy caused by BCR-ABL gene mutation or amplification. *Science*. 2001; 293(5531):876-880.
5. Shah NP, Nicoll JM, Nagar B, Gorre ME, Paquette RL, Kuriyan J, Sawyers CL. Multiple BCR-ABL kinase domain mutations confer polyclonal resistance to the tyrosine kinase inhibitor imatinib (STI571) in chronic phase and blast crisis chronic myeloid leukemia. *Cancer Cell*. 2002;2(2):117-125.
6. Donato NJ, Wu JY, Stapley J, Lin H, Arlinghaus R, Aggarwal BB, Shishodia S, Albitar M, Hayes K, Kantarjian H, Talpaz M. Imatinib mesylate resistance through BCR-ABL independence in chronic myelogenous leukemia. *Cancer Res*. 2004;64(2):672-677.
7. Illmer T, Schaich M, Platzbecker U, Freiberg-Richter J, Oelschlägel U, von Bonin M, Pursche S, Bergemann T, Ehninger G, Schleyer E. P-glycoprotein-mediated drug efflux is a resistance mechanism of chronic myelogenous leukemia cells to treatment with imatinib mesylate. *Leukemia*. 2004;18(3):401-408.
8. Diamond JM, Melo JV. Mechanisms of resistance to BCR-ABL kinase inhibitors. *Leuk Lymphoma*. 2011; 52 Suppl 1:12-22.
9. Donato NJ, Wu JY, Stapley J, Gallick G, Lin H, Arlinghaus R, Talpaz M. BCR-ABL independence and LYN kinase overexpression in chronic myelogenous leukemia cells selected for resistance to STI571. *Blood*. 2003;101(2):690-698.
10. Ito T, Tanaka H, Kimura A. Establishment and characterization of a novel imatinib-sensitive chronic myeloid leukemia cell line MYL, and an imatinib-resistant subline MYL-R showing overexpression of Lyn. *Eur J Haematol*. 2007;78(5):417-431.
11. Wu J, Meng F, Kong LY, Peng Z, Ying Y, Bornmann WG, Darnay BG, Lamothe B, Sun H, Talpaz M, Donato NJ. Association between imatinib-resistant BCR-ABL mutation-negative leukemia and persistent activation of LYN kinase. *J Natl Cancer Inst*. 2008;100(13):926-939.
12. O'Hare T, Eide CA, Deininger MW. Persistent LYN

- signaling in imatinib-resistant, BCR-ABL-independent chronic myelogenous leukemia. *J Natl Cancer Inst.* 2008;100(13):908-909.
13. Dai Y, Rahmani M, Corey SJ, Dent P, Grant S. A Bcr/Abl-independent, Lyn-dependent form of imatinib mesylate (STI-571) resistance is associated with altered expression of Bcl-2. *J Biol Chem.* 2004;279(33):34227-34239.
 14. Ptasznik A, Nakata Y, Kalota A, Emerson SG, Gewirtz AM. Short interfering RNA (siRNA) targeting the Lyn kinase induces apoptosis in primary, and drug-resistant, BCR-ABL1(+) leukemia cells. *Nat Med.* 2004;10(11):1187-1189.
 15. Kim SJ, Letterio J. Transforming growth factor- β signalling in normal and malignant hematopoiesis. *Leukemia.* 2003;17:1731-1737.
 16. Hatzfeld J, Li ML, Brown EL, Sookdeo H, Levesque JP, O'Toole T, Gurney C, Clark, SC, Hatzfeld A. Release of early human hematopoietic progenitors from quiescence by antisense transforming growth factor beta 1 or Rb oligonucleotides. *J Exp Med* 1991;174:925-929.
 17. Naka K, Hoshii T, Muraguchi T, Tadokoro Y, Ooshio T, Kondo Y, Nakao S, Motoyama N, Hirao A. TGF-beta-FOXO signalling maintains leukaemia-initiating cells in chronic myeloid leukaemia. *Nature.* 2010;463(7281):676-680.
 18. Yamazaki S, Iwama A, Takayanagi S, Eto K, Ema H, Nakauchi H. TGF-beta as a candidate bone marrow niche signal to induce hematopoietic stem cell hibernation. *Blood.* 2009;113(6):1250-6.
 19. Møller GM, Frost V, Melo JV, Chantry A. Upregulation of the TGFbeta signalling pathway by Bcr-Abl: implications for haemopoietic cell growth and chronic myeloid leukaemia. *FEBS Lett.* 2007;581(7):1329-1334.
 20. Atfi A, Drobetsky E, Boissonneault M, Chapdelaine A, Chevalier S. Transforming growth factor beta down-regulates Src family protein tyrosine kinase signaling pathways. *J Biol Chem.* 1994;269(48):30688-30693.
 21. Wohlfert EA, Gorelik L, Mittler R, Flavell RA, Clark RB. Cutting edge: deficiency in the E3 ubiquitin ligase Cbl-b results in a multifunctional defect in T cell TGF-beta sensitivity in vitro and in vivo. *J Immunol.* 2006;176:1316-1320.
 22. Naramura M, Nadeau S, Mohapatra B, Ahmad G, Mukhopadhyay C, Sattler M, Raja SM, Natarajan A, Band V, Band H. Mutant Cbl proteins as oncogenic drivers in myeloproliferative disorders. *Oncotarget.* 2011;2(3):245-250
 23. Kyo S, Sada K, Qu X, Maeno K, Miah SM, Kawauchi-Kamata K, Yamamura H. Negative regulation of Lyn protein-tyrosine kinase by c-Cbl ubiquitin-protein ligase in Fc epsilon RI-mediated mast cell activation. *Genes Cells.* 2003;8:825-836.
 24. Wicks SJ, Lui S, Abdel-Wahab N, Mason RM, Chantry A. Inactivation of smad-transforming growth factor beta signaling by Ca²⁺-calmodulin-dependent protein kinase II. *Mol Cell Biol.* 2000;20:8103-8111.
 25. Bezombes C, de Thonel A, Apostolou A, Louat T, Jaffrézou JP, Laurent G, Quillet-Mary A. Overexpression of protein kinase Czeta confers protection against antileukemic drugs by inhibiting the redox-dependent sphingomyelinase activation. *Mol Pharmacology* 2002;62:1446-1455.
 26. Cutts AJ, Soond SM, Powell S, Chantry A. Early phase TGF β receptor signalling dynamics stabilised by the deubiquitinase UCH37 promotes cell migratory responses. *Int J Biochem Cell Biol.* 2011;43(4):604-612.