

Correction

Correction: ATG4A promotes tumor metastasis by inducing the epithelial-mesenchymal transition and stem-like properties in gastric cells

Shi-Wei Yang^{1,2}, Yi-Fang Ping^{2,3}, Yu-Xing Jiang¹, Xiao Luo¹, Xia Zhang^{2,3}, Xiu-Wu Bian^{2,3} and Pei-Wu Yu¹

¹Department of General Surgery and Center of Minimal Invasive Gastrointestinal Surgery, Southwest Hospital, Third Military Medical University, Chongqing, China

²Key Laboratory of Tumor Immunopathology of Ministry of Education of China, Third Military Medical University, Chongqing, China

³Institute of Pathology and Southwest Cancer Center, Southwest Hospital, Third Military Medical University, Chongqing, China

Published:

Copyright: © 2023 Yang et al. This is an open access article distributed under the terms of the [Creative Commons Attribution License](https://creativecommons.org/licenses/by/3.0/) (CC BY 3.0), which permits unrestricted use, distribution, and reproduction in any medium, provided the original author and source are credited.

This article has been corrected: During the assembly of Figure 1, the H&E staining of lymph node metastasis in well differentiated gastric cancer and poor differentiated gastric cancer was inadvertently used for the same pathological slides. Similarly, In Figure 2D and 2E, the images of Matrigel™ invasion assay of 36h-ShATG4A-3 group was inadvertently used for the same picture. In addition, the same image of 48h-ATG4A-OE group in the wound healing assay was used both in Figure 2B and Figure 5E. The corrected Figure 1 and 2, produced using the original data, are shown below. The authors declare that these corrections do not change the results or conclusions of this paper.

Original article: Oncotarget. 2016; 7:39279–39292. <https://doi.org/10.18632/oncotarget.9827>

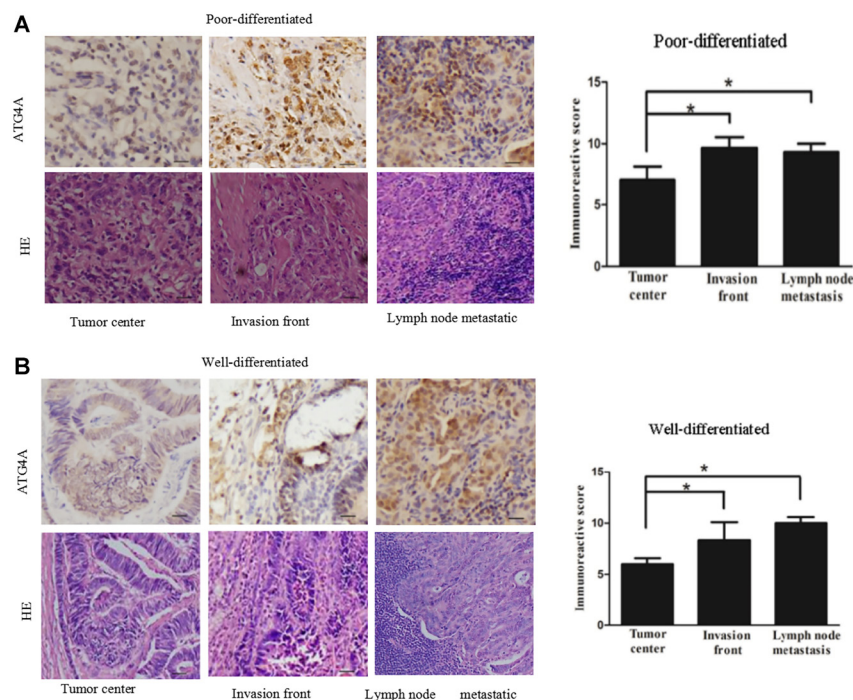


Figure 1: ATG4A is overexpressed in the invasion front and lymph node metastatic lesions of gastric cancers. (A) HE staining and immunohistochemical staining of ATG4A in the tumor center, the invasion front and lymph node metastatic lesions of poor differentiated gastric cancers. **(B)** HE staining and immunohistochemical staining of ATG4A in the tumor center, the invasion front and lymph node metastatic lesions of well differentiated gastric cancers. The right bar graph represents scores of ATG4A expression.

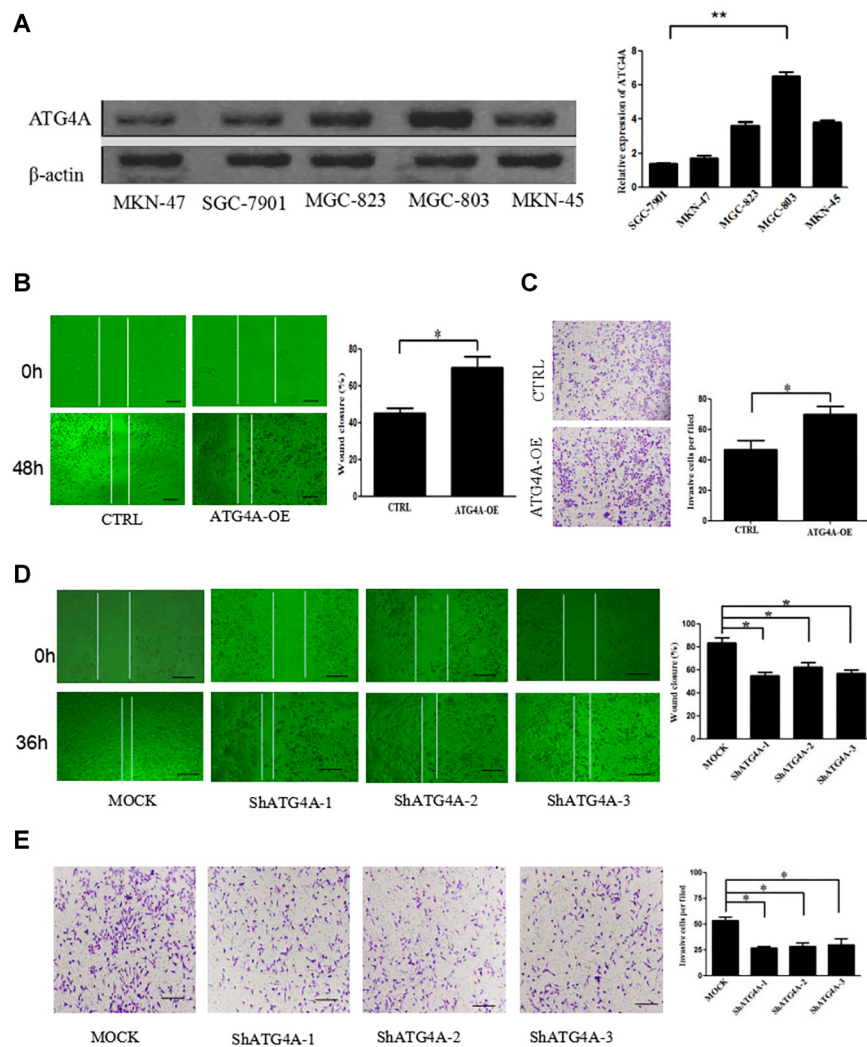


Figure 2: ATG4A promotes gastric cells migration and invasion *in vitro*. (A) Expression of ATG4A protein in gastric cancer cells (MKN-47, SGC-7901, MGC-823, MGC-803 and MKN-45 cell). The right bar graph represents relative intensity. (B) Wound healing assay for ATG4A-overexpressed SGC-7901 (ATG4A-OE) cells compared with control cells (NC). The right graph presents the ratios of migrated ATG4A-OE cells relative to those of the control group. (C) Matrigel™ invasion assay for ATG4A-OE cells compared with NC. The invasion index was calculated between NC cells and ATG4A-OE cells in the right bar graph. (D) Wound healing assay for ATG4A-knockdown MGC-803 cells (ShATG4A-1, ShATG4A-2, ShATG4A-3) and control cells (Mock). (E) Matrigel™ invasion assay for knockdown MGC-803 cells and control cells. * $P < 0.05$.