

Correction

Correction: LncRNA HULC enhances epithelial-mesenchymal transition to promote tumorigenesis and metastasis of hepatocellular carcinoma via the miR-200a-3p/ZEB1 signaling pathway

Shi-Peng Li^{1,*}, Hai-Xu Xu^{3,*}, Yao Yu^{1,*}, Jin-Dan He^{1,*}, Zhen Wang¹, Yan-Jie Xu¹, Chang-Ying Wang³, Hai-Ming Zhang^{1,2}, Rong-Xin Zhang⁴, Jian-Jun Zhang^{1,2}, Zhi Yao³ and Zhong-Yang Shen^{1,2}

¹First Central Clinical College, Tianjin Medical University, Tianjin, P.R. China

²Oriental Organ Transplant Center of Tianjin First Central Hospital, Key Laboratory of Organ Transplantation of Tianjin, Tianjin, P.R.China

³Department of Immunology, Tianjin Key Laboratory of Cellular and Molecular Immunology, Key Laboratory of Immuno Microenvironment and Disease of the Educational Ministry, Tianjin Medical University, Tianjin, P.R.China

⁴Laboratory of Immunology and Inflammation, Department of Immunology, Key Laboratory of Immune Microenvironment and Diseases of Educational Ministry of China, Basic Medical College, Tianjin Medical University, Tianjin, P.R.China

* These authors have contributed equally to this work

Published:

Copyright: © 2023 Li et al. This is an open access article distributed under the terms of the [Creative Commons Attribution License](#) (CC BY 3.0), which permits unrestricted use, distribution, and reproduction in any medium, provided the original author and source are credited.

This article has been corrected: The “siRNA-NC BEL-7402” cell’s E-Cadherin immunocytochemistry picture in Figure 6D was accidentally duplicated as the “siRNA-NC BEL-7402” cell’s E-Cadherin immunocytochemistry picture in Figure 5B. In Figure 6B, the “siRNA-NC Huh-6” cell’s invasion picture in Figure 5C was accidentally duplicated as the “miRNA-NC Huh-6” cell’s invasion picture. In Figure 6B, the “miR-200a-3p mimics Huh-6” cell’s invasion picture was accidentally duplicated as “miR-200a-3p mimics Huh-6” cell’s migration picture. The corrected Figure 5B and Figure 6B are shown below. The authors declare that these corrections do not change the results or conclusions of this paper.

Original article: Oncotarget. 2016; 7:42431–42446. <https://doi.org/10.18632/oncotarget.9883>

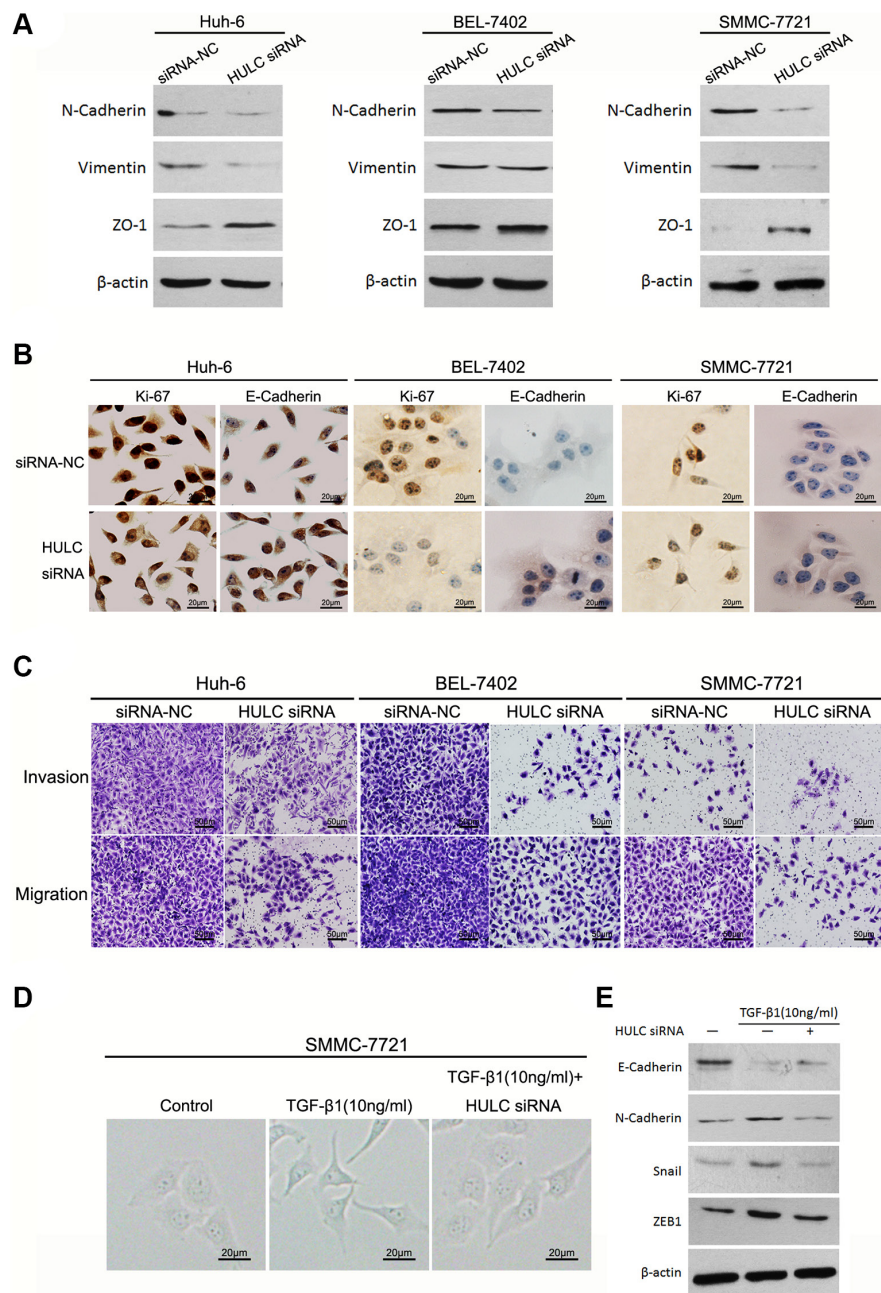


Figure 5: HULC promoted epithelial to mesenchymal transition *in vitro*. (A) Western blot was used to measure expression levels of EMT markers (N-Cadherin, Vimentin and ZO-1) in Huh-6, BEL-7402 and SMMC-7721 cells transfected with HULC siRNA or siRNA-NC, and normalized to β -actin expression. (B) Expression levels and location of Ki-67 and E-Cadherin in Huh-6, BEL-7402 and SMMC-7721 transfected with siRNA-NC or HULC siRNA as determined using immunocytochemistry (magnification, 200 \times , scale bars = 20 μ m). (C) The effect of decreasing HULC expression on cell invasion and migration of Huh-6, BEL-7402 and SMMC-7721 cells as assessed using a transwell assay (magnification, 100 \times , scale bars = 50 μ m). (D) The effect of HULC on morphological differences in SMMC-7721 cells treated with TGF- β 1 (magnification, 400 \times , scale bars = 20 μ m). (E) Measures of expression levels of EMT markers (E-Cadherin, N-Cadherin, Snail and ZEB1) as determined using western blot in SMMC-7721 cells treated with TGF- β 1 or transfected with HULC siRNA, and normalized to β -actin expression.

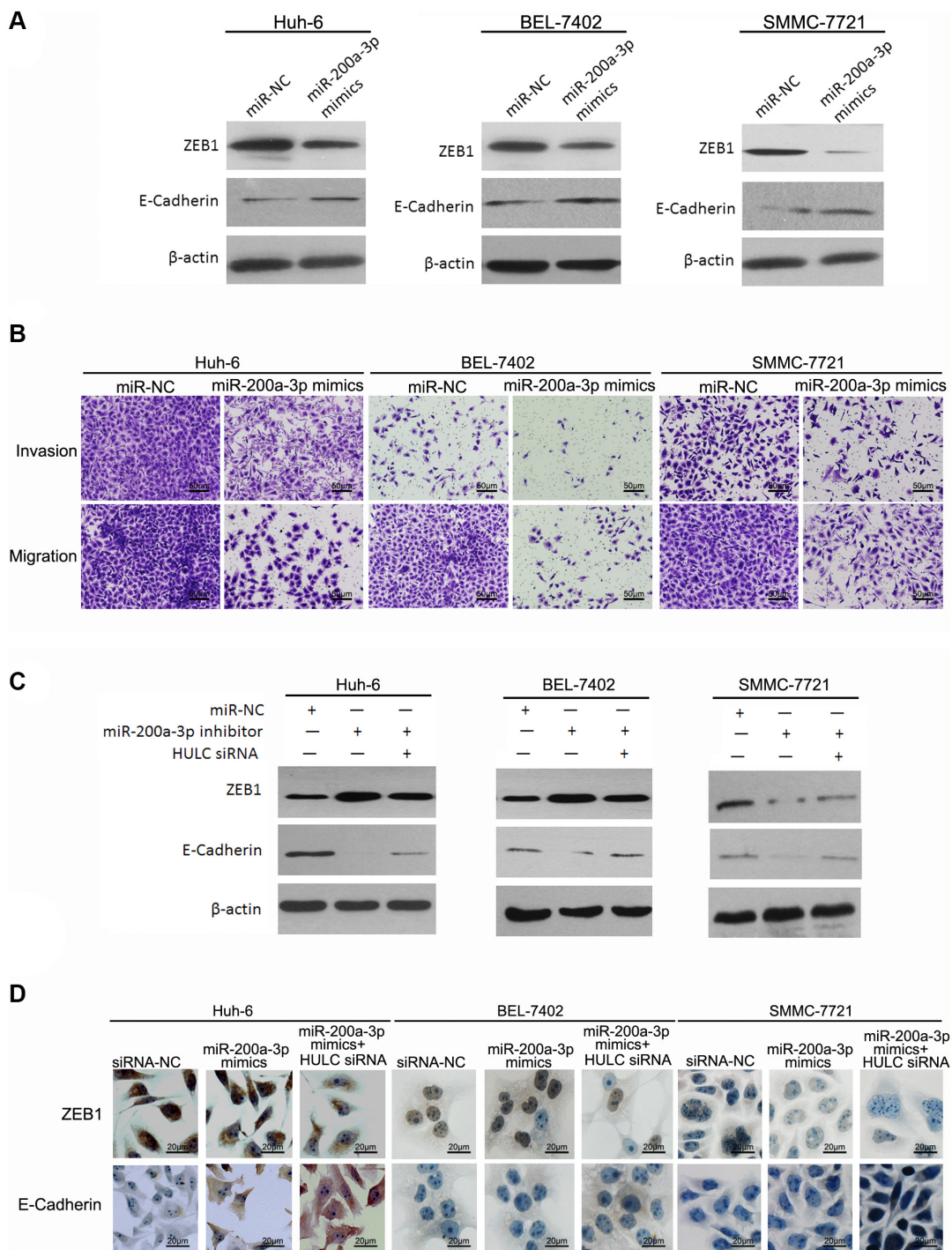


Figure 6: HULC enhanced epithelial to mesenchymal transition by sequestering miR-200a in HCC cells. (A) Western blot was used to measure expression levels of ZEB1 and E-Cadherin in Huh-6, BEL-7402 and SMMC-7721 cells transfected with miR-200a-3p mimics or miR-NC, and normalized to β -actin expression. (B) The effect of increasing miR-200a-3p expression in cell invasion and migration of Huh-6, BEL-7402 and SMMC-7721, transfected with miR-200a-3p mimics or miR-NC, as determined using a transwell assay (magnification, 100 \times , scale bars = 50 μ m). (C) Expression levels of ZEB1 and E-Cadherin as determined using western blot in Huh-6, BEL-7402 and SMMC-7721 cells transfected with the miR-200a-3p inhibitor, miR-NC or HULC siRNA, and normalized to β -actin expression. (D) Expression levels and location of ZEB1 and E-Cadherin as determined using immunocytochemistry in Huh-6, BEL-7402 and SMMC-7721 cells transfected with miR-200a-3p mimics, miR-NC or HULC siRNA (magnification, 400 \times , scale bars = 20 μ m).