

## Correction

## Correction: Elevated eukaryotic elongation factor 2 expression is involved in proliferation and invasion of lung squamous cell carcinoma

Yang Song<sup>1,\*</sup>, Bing Sun<sup>2,\*</sup>, LiHong Hao<sup>1</sup>, Jun Hu<sup>1</sup>, Sha Du<sup>3</sup>, Xin Zhou<sup>1</sup>, LiYuan Zhang<sup>1</sup>, Lu Liu<sup>1</sup>, LinLin Gong<sup>1</sup>, XinMing Chi<sup>1</sup>, Qiang Liu<sup>3</sup> and ShuJuan Shao<sup>1,4</sup>

<sup>1</sup>Department of Histology and Embryology, Dalian Medical University, Dalian, China

<sup>2</sup>Department of Chest Surgery, The First Affiliated Hospital of Dalian Medical University, Dalian, China

<sup>3</sup>Institute of Cancer Stem Cell, Dalian Medical University Cancer Center, Liaoning, China

<sup>4</sup>Liaoning Key Laboratory of Proteomics, Dalian Medical University, Liaoning, China

\*These authors have contributed equally to this work

**Published:**

**Copyright:** © 2022 Song et al. This is an open access article distributed under the terms of the [Creative Commons Attribution License](https://creativecommons.org/licenses/by/3.0/) (CC BY 3.0), which permits unrestricted use, distribution, and reproduction in any medium, provided the original author and source are credited.

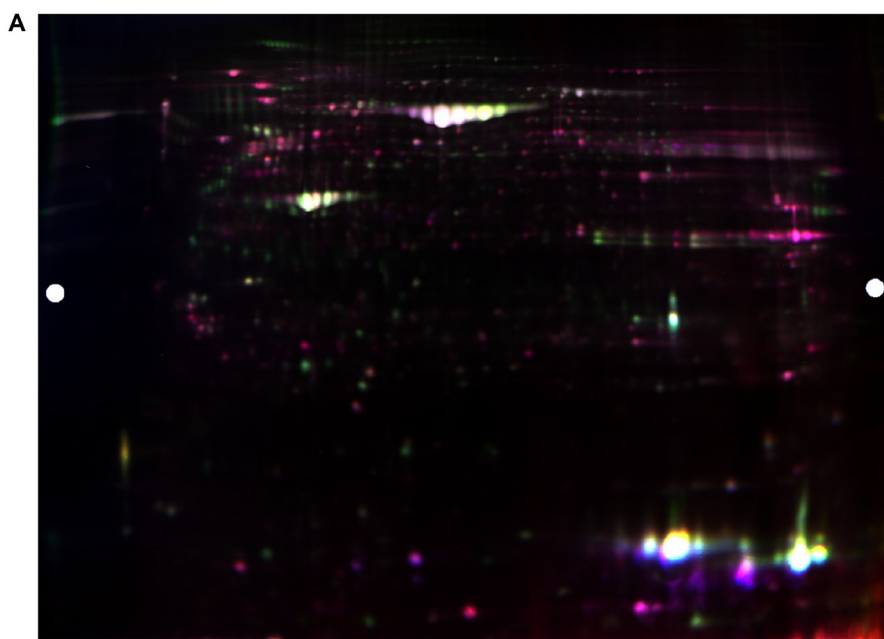
**This article has been corrected:** Due to concerns raised regarding three different figure images in this paper, the Dalian Medical University Academic Committee completed a through evaluation and concluded the following:

1) Figures 1B and 1C are different from Figures 1D and Figure 3D of the paper published in PLoS One: <https://journals.plos.org/plosone/article?id=10.1371/journal.pone.0095121>.

2) Figure 1A of the two papers are indeed the same, but for different details. Due to the massive information of proteomics analysis, it is worth exploring how to present different details of the same proteomics in different papers.

In order to avoid dispute, a replacement image of Figure 1A, obtained from the original data, is shown below. The authors declare that these corrections do not change the results or conclusions of this paper.

Original article: Oncotarget. 2016; 7:58470–58482. <https://doi.org/10.18632/oncotarget.11298>



**Figure 1: EF2 expression of LSCC tissues and peri-carcinoma lung tissues in 2-D DIGE and MS analysis. (A)** Representative image of the overlaid images of Cy- labeled samples.