

Correction

Correction: CCR4 promotes metastasis via ERK/NF- κ B/MMP13 pathway and acts downstream of TNF- α in colorectal cancer

Baochi Ou^{1,2,3,*}, Jingkun Zhao^{1,2,3,*}, Shaopei Guan^{1,2,3,*}, Hao Feng^{2,4}, Xiongzi Wangpu^{1,2}, Congcong Zhu^{1,2,3}, Yaping Zong^{1,2}, Junjun Ma^{1,2}, Jing Sun^{1,2}, Xiaohui Shen¹, Minhua Zheng^{1,2,3} and Aiguo Lu^{1,2,3}

¹Department of General Surgery, Ruijin Hospital, Shanghai Jiao Tong University School of Medicine, Shanghai, 200025, China

²Shanghai Minimally Invasive Surgery Center, Ruijin Hospital, Shanghai Jiao Tong University School of Medicine, Shanghai, 200025, China

³Shanghai Institute of Digestive Surgery, Ruijin Hospital, Shanghai Jiao Tong University School of Medicine, Shanghai, 200025, China

⁴Department of General, Visceral, Transplantation, Vascular and Thoracic Surgery, Hospital of the University of Munich, 81377 Munich, Germany

*These authors contributed equally to this work

Published:

Copyright: © 2021 Ou et al. This is an open access article distributed under the terms of the [Creative Commons Attribution License](#) (CC BY 3.0), which permits unrestricted use, distribution, and reproduction in any medium, provided the original author and source are credited.

This article has been corrected: In Figure 4C, the images of the “SW480/si-MMP13” and “SW480/CL82198” groups contain an accidental overlap with the image of “SW1116/CCR4/U0126” in Figure 5C. The corrected Figure 4C, produced using the original data, is shown below. The authors declare that these corrections do not change the results or conclusions of this paper.

Original article: Oncotarget. 2016; 7:47637–47649. <https://doi.org/10.18632/oncotarget.10256>

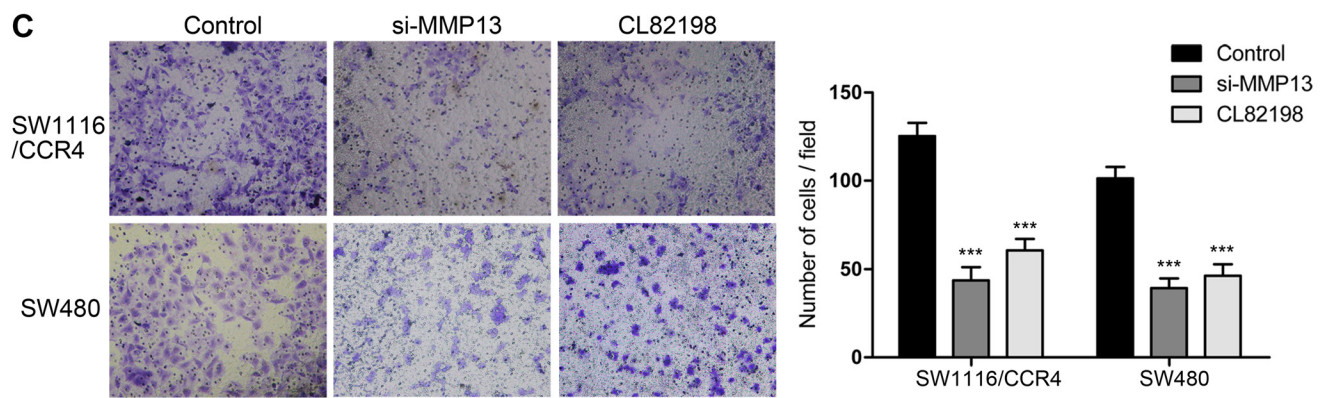


Figure 4: (C) Results of invasion assays showed the inhibitory roles of si-MMP13 or CL82198 on SW1116/CCR4 and SW480 cells (magnification, $\times 200$).