

## Correction

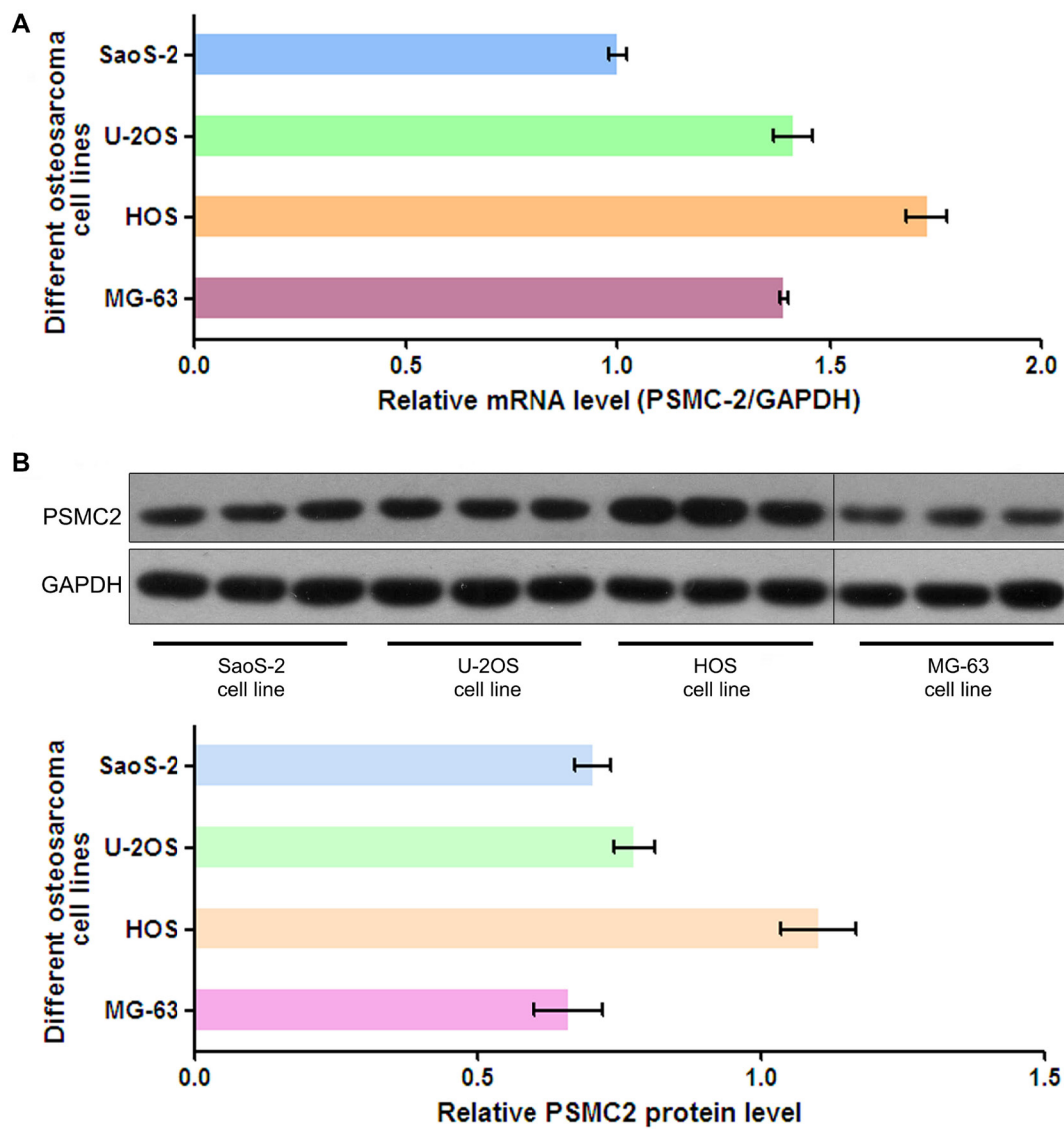
**Correction: PSMC2 is up-regulated in osteosarcoma and regulates osteosarcoma cell proliferation, apoptosis and migration****Mingzhi Song<sup>1,2</sup>, Yong Wang<sup>3</sup>, Zhen Zhang<sup>1,\*</sup> and Shouyu Wang<sup>1,\*</sup>**<sup>1</sup>Department of Orthopaedics, The First Affiliated Hospital of Dalian Medical University, 116011, Dalian, Liaoning, People's Republic of China<sup>2</sup>Department of Orthopaedics, The Third Affiliated Hospital of Dalian Medical University, 116200, Jinpu New Area, Liaoning, People's Republic of China<sup>3</sup>Department of Orthopaedics, Affiliated Central Hospital of Shenyang Medical College, 110024, Shenyang, Liaoning, People's Republic of China

\*These authors have contributed equally to this work

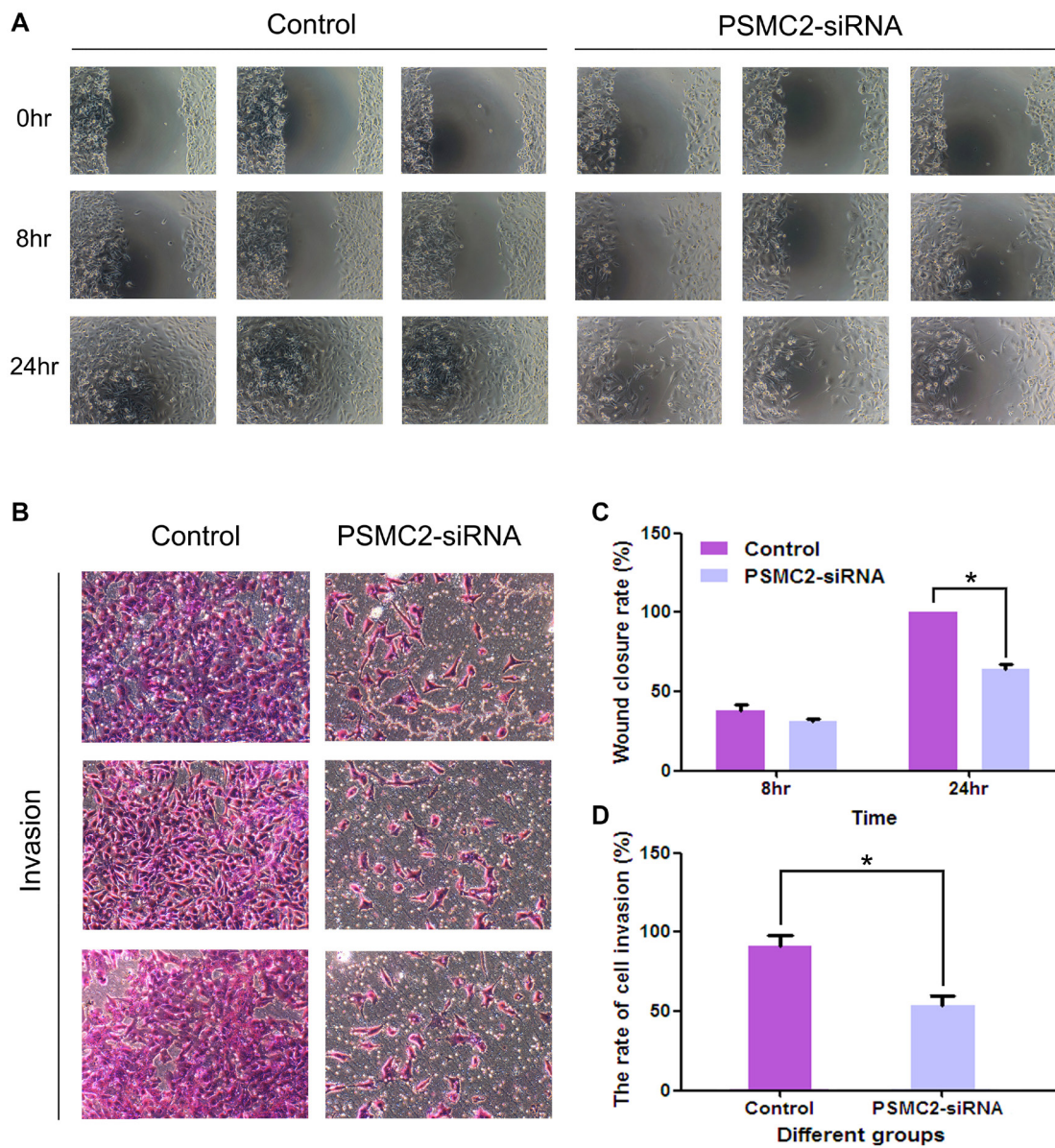
**Published:****Copyright:** © 2021 Song et al. This is an open access article distributed under the terms of the [Creative Commons Attribution License](#) (CC BY 3.0), which permits unrestricted use, distribution, and reproduction in any medium, provided the original author and source are credited.

**This article has been corrected:** In Figure 8B, the 2nd panel of the PSMC2-siRNA column contains an accidental duplicate of the 1st panel in that column. In Figure 10C, the 'Control' image is an accidental duplicate of the 'Control' image in Figure 9C. are identical. In Figure 2B, to better show the protein expression of PSMC2 in four different osteosarcoma cell lines, we deleted the tenth strip that is from the positive control of DU145 (one kind of prostate adenocarcinoma cell line), producing a splice. The corrected Figures 8, 10 and 2, produced from the original data, are shown below. The authors declare that these corrections do not change the results or conclusions of this paper.

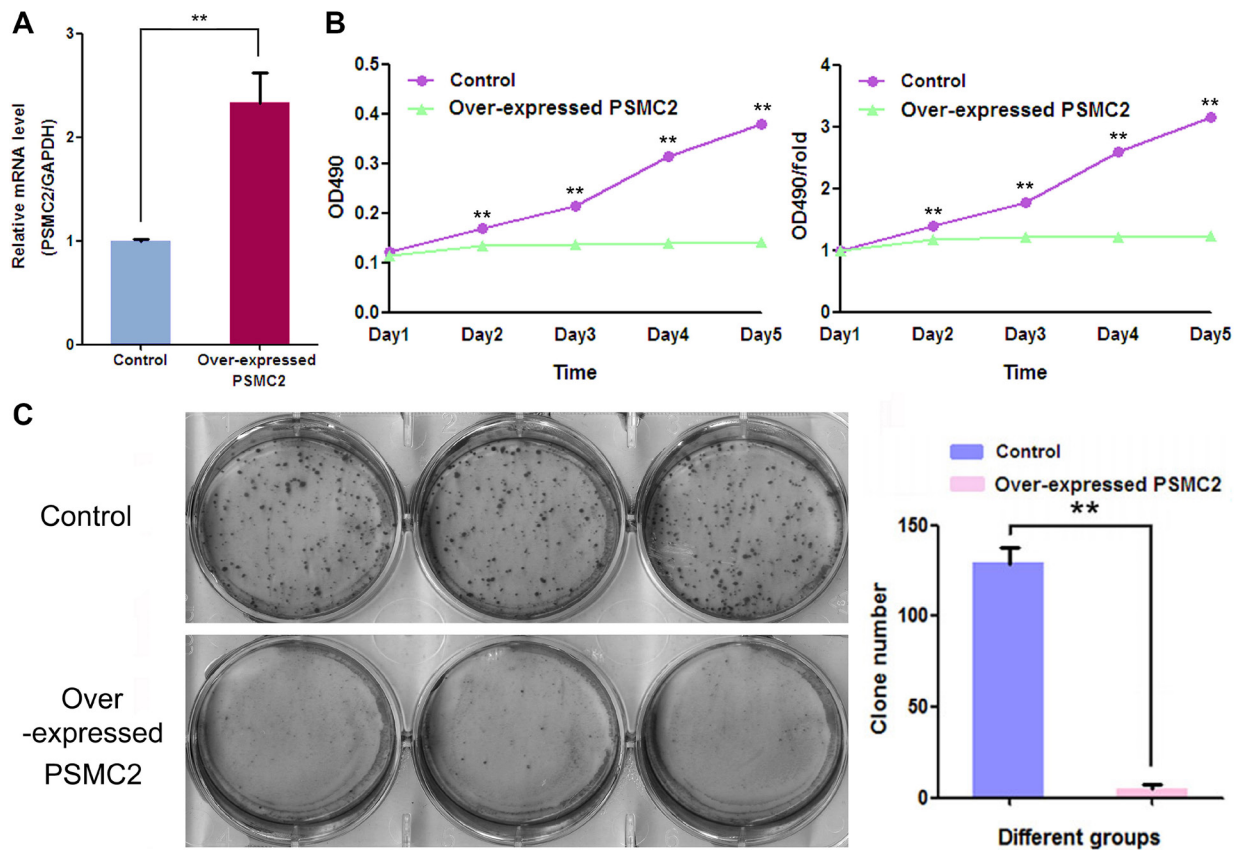
Oncotarget. 2017; 8:933–953. <https://doi.org/10.18632/oncotarget.13511>



**Figure 2: The mRNA level and protein expression of PSMC2 in osteosarcoma cells.** (A) PSMC2 mRNA from four common osteosarcoma cell lines was all detected by real-time PCR. (B) Western blotting showed that PSMC2 expressed in four common osteosarcoma cell lines.



**Figure 8: Effects of Silencing PSMC2 on migration and invasion in osteosarcoma cells.** (A) The number of migrative cells was determined using scratch wound healing assays and the cells migrating progression was recorded under microscope at indicated time points. (C) Histogram represented the relative wound closure speed at 8 and 24 hours. \* $P < 0.05$  as compared with normal control cells. (B) Cell invasive ability of control or PSMC2 knockdown cells were determined via a transwell assay. And the representative phase contrast images demonstrated the invasion of the cells. (D) Bar graph summarized the rate of cell invasion from control and PSMC2 silenced cells \* $P < 0.05$  as compared with normal control cells. All results were confirmed in three independent experiments.



**Figure 10: The effect of exogenously enforced PSMC2 expression on osteosarcoma cell growth.** (A) The mRNA levels of PSMC2 in control and PSMC2 over-expressing cells were assessed by real-time PCR and the consequent influences on osteosarcoma growth were separately determined by (B) MTT assay and (C) colony formation assay. Data were from three independent experiments.  $**P < 0.01$ .