

Correction

## Correction: Metformin and trametinib have synergistic effects on cell viability and tumor growth in *NRAS* mutant cancer

Igor Vujic<sup>1,2</sup>, Martina Sanlorenzo<sup>1,3</sup>, Christian Posch<sup>1,2</sup>, Rosaura Esteve-Puig<sup>1</sup>, Adam J. Yen<sup>1</sup>, Andrew Kwong<sup>1</sup>, Aaron Tsumura<sup>1</sup>, Ryan Murphy<sup>1</sup>, Klemens Rappersberger<sup>2</sup> and Susana Ortiz-Urda<sup>1</sup>

<sup>1</sup>University of California, San Francisco, Department of Dermatology, Mt. Zion Cancer Research Center, San Francisco, CA, USA

<sup>2</sup>Rudolfstiftung Hospital, Academic Teaching Hospital, Department of Dermatology, Juchgasse, Vienna, Austria

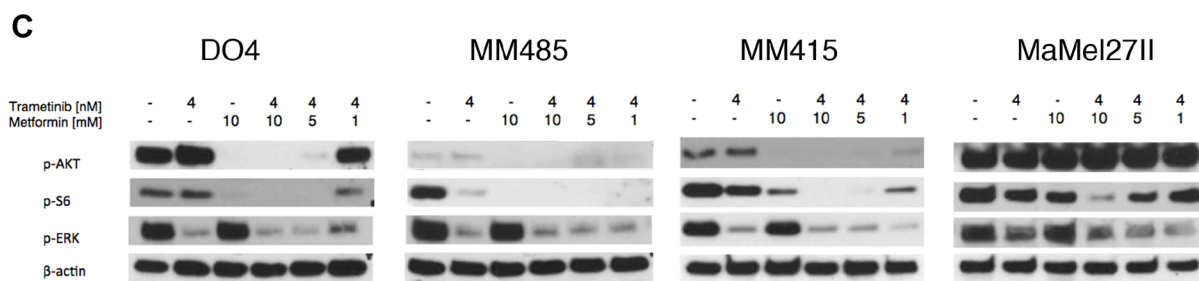
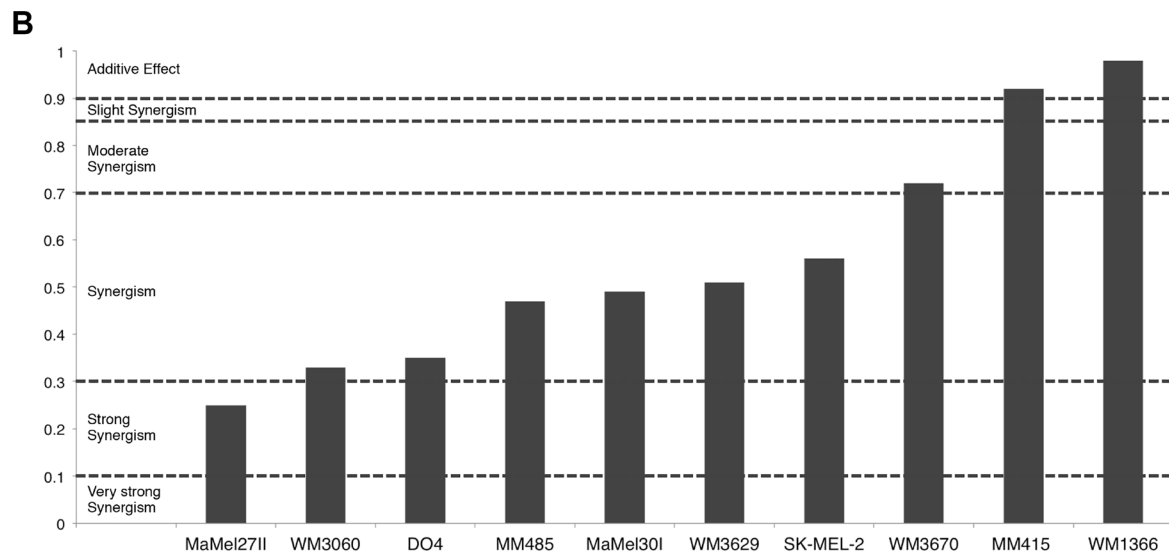
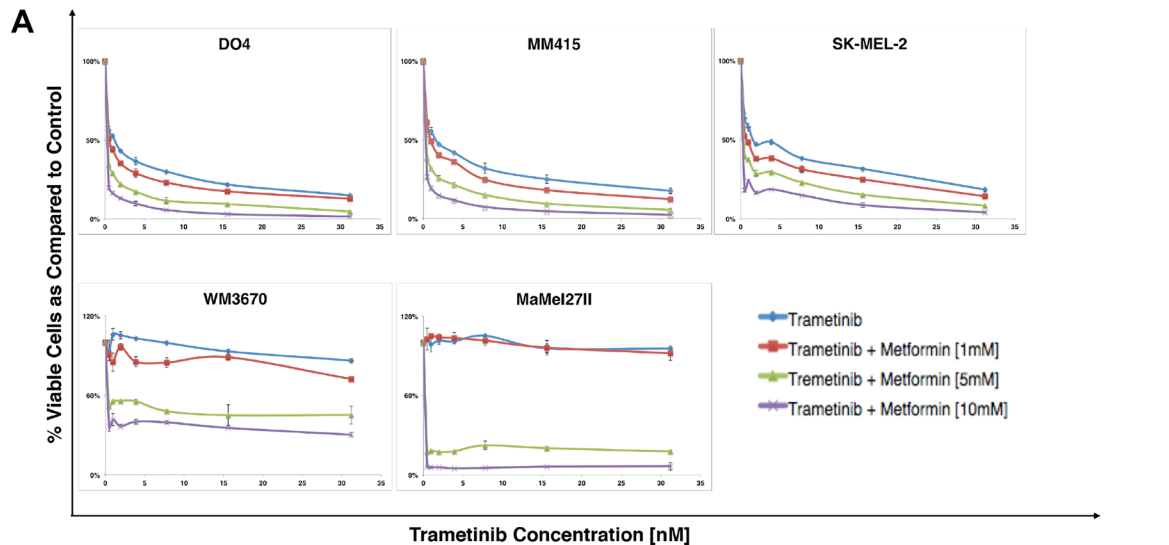
<sup>3</sup>Department of Medical Sciences, Section of Dermatology, University of Turin, Italy

**Published:**

**Copyright:** © 2021 Vujic et al. This is an open access article distributed under the terms of the [Creative Commons Attribution License](#) (CC BY 3.0), which permits unrestricted use, distribution, and reproduction in any medium, provided the original author and source are credited.

**This article has been corrected:** This article has been corrected: In Figure 1C, the top image in the ‘MM485’ column is an accidental duplicate of the bottom image in that column. The corrected Figure 1, produced from the original data, is shown below. The authors declare that these corrections do not change the results or conclusions of this paper.

Original article: Oncotarget. 2015; 6:969–978. <https://doi.org/10.18632/oncotarget.2824>



**Figure 1: Metformin and trametinib have synergistic effects on cell viability in NRAS mutant melanoma cells. (A)** Representative dose response curves for trametinib and its combination with metformin in different ratios. The addition of metformin to trametinib leads to a downward shift of the dose response curves in all cell lines tested ( $n = 3$ , incubation 72 hrs, error bars represent SD). **(B)** Combination index (CI) values for metformin and trametinib. The CI values were calculated using the CalcuSyn software according to the recommendations of Chou-Talalay. The drugs show synergism in all cell lines except MM415 and WM1366 where they have an additive effect [26]. **(C)** Immunoblot analyses for downstream effector proteins of the MAPK and PI3K/AKT/mTOR signaling pathways. Cells were treated with metformin, trametinib or their combinations (incubation 4 hrs.). Dual pathway inhibition is achieved by combining metformin and trametinib, as evidenced by the decrease of p-ERK and p-S6.