

Correction

Correction: Overexpressed EDIL3 predicts poor prognosis and promotes anchorage-independent tumor growth in human pancreatic cancer

Shu-Heng Jiang^{1,2,*}, Yang Wang^{1,2,4,*}, Jian-Yu Yang^{3,*}, Jun Li^{2,*}, Ming-Xuan Feng⁵, Ya-Hui Wang^{1,2}, Xiao-Mei Yang², Ping He², Guang-Ang Tian², Xiao-Xin Zhang², Qing Li^{1,2}, Xiao-Yan Cao², Yan-Miao Huo³, Min-Wei Yang³, Xue-Liang Fu³, Jiao Li³, De-Jun Liu³, Miao Dai⁷, Shan-Yun Wen⁷, Jian-Ren Gu^{1,2}, Jie Hong⁶, Rong Hua³, Zhi-Gang Zhang² and Yong-Wei Sun³

¹Shanghai Medical College of Fudan University, Shanghai, P.R. China

²State Key Laboratory of Oncogenes and Related Genes, Shanghai Cancer Institute, Ren Ji Hospital, School of Medicine, Shanghai Jiao Tong University, Shanghai, P.R. China

³Department of Biliary-Pancreatic Surgery, Ren Ji Hospital, School of Medicine, Shanghai Jiao Tong University, Shanghai, P.R. China

⁴Department of Urology, Shanghai No.5 People's Hospital, Fudan University, Shanghai, P.R. China

⁵Department of Liver Surgery, Ren Ji Hospital, School of Medicine, Shanghai Jiao Tong University, Shanghai, P.R. China

⁶Division of Gastroenterology and Hepatology, Ren Ji Hospital, Shanghai Institution of Digestive Disease, Key Laboratory of Gastroenterology and Hepatology, Ministry of Health, State Key Laboratory of Oncogene and Related Genes, Shanghai Jiao-Tong University School of Medicine, Shanghai, P.R. China

⁷Department of Obstetrics and Gynecology, Shanghai Jiao Tong University Affiliated Sixth People's Hospital, Shanghai, P.R. China

*These authors contributed equally to this work

Published:

Copyright: © 2021 Jiang et al. This is an open access article distributed under the terms of the [Creative Commons Attribution License](#) (CC BY 3.0), which permits unrestricted use, distribution, and reproduction in any medium, provided the original author and source are credited.

This article has been corrected: During the assembly of Figure 1E, the same image was inadvertently used for two representative photographs of the EDIL3 immunoreactivity in normal pancreas. In addition, during preparation of the data in Figure 3E, the raw data of the sh-1 group was mistakenly copied as the sh-2 group. Therefore, the representative flow cytometry diagram of sh-2 group was wrong and the percentage in the sh-2 group was also mistakenly labeled. Finally, an image of the Ctrl group was accidentally used to represent the 10 nM EDIL3 group in Figure 4E. The corrected Figures 1E, 3E and 4E are shown below. The authors declare that these corrections do not change the results or conclusions of this paper.

Original article: Oncotarget. 2016; 7:4226–4240. <https://doi.org/10.18632/oncotarget.6772>

Figure 1E

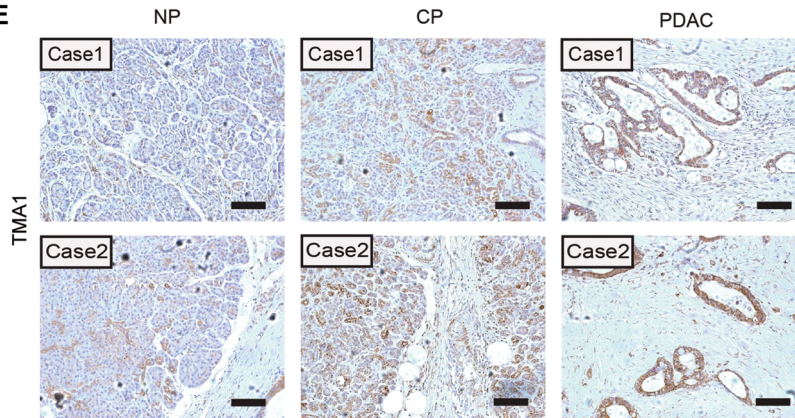


Figure 3E

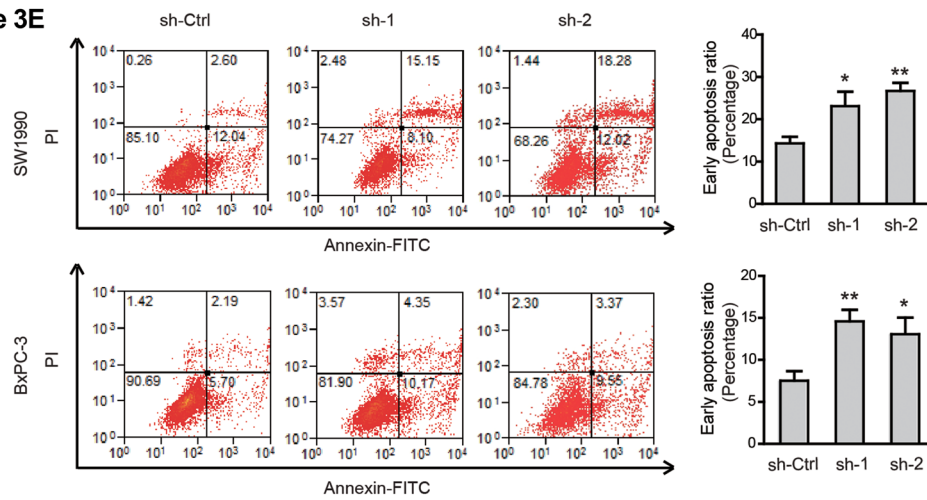


Figure 4E

