

Correction: Exclusive destruction of mitotic spindles in human cancer cells

Leonid Visochek¹, Asher Castiel², Leonid Mittelman³, Michael Elkin⁴, Dikla Atias², Talia Golan², Shai Izraeli^{2,5}, Tamar Peretz⁴ and Malka Cohen-Armon^{1,6}

¹The Neufeld Cardiac Research Institute, Department of Physiology and Pharmacology, Sackler School of Medicine, Tel-Aviv University, Tel-Aviv 69978, Israel

²Cancer Research Center, Sheba Medical Center, Ramat Gan 53621, Israel

³The Imaging Unit, Sackler School of Medicine, Tel-Aviv University, Tel-Aviv 69978, Israel

⁴Sharett Oncology Institute, Hadassah Medical Center, Ein-Kerem, Jerusalem 91120, Israel

⁵The Department of Human Molecular Genetics and Biochemistry, Sackler School of Medicine, Tel-Aviv University, Tel-Aviv 69978, Israel

⁶Sagol School of Neuroscience, Tel-Aviv University, Tel-Aviv 69978, Israel

Published: April 07, 2020

Copyright: Visochek et al. This is an open-access article distributed under the terms of the Creative Commons Attribution License 3.0 (CC BY 3.0), which permits unrestricted use, distribution, and reproduction in any medium, provided the original author and source are credited.

This article has been corrected: There was an error during the assembly of the bottom panel of Figure 5B. Instead of displaying IP of α -tubulin by α -tubulin and NuMA IP by NuMA, NuMA IP by NuMA was displayed twice. The correct Figure 5B is shown below. There are no changes in the figure legend. The authors declare that this correction does not change the results and conclusions of the paper.

Original article: Oncotarget. 2017; 8:20813–20824. <https://doi.org/10.18632/oncotarget.15343>

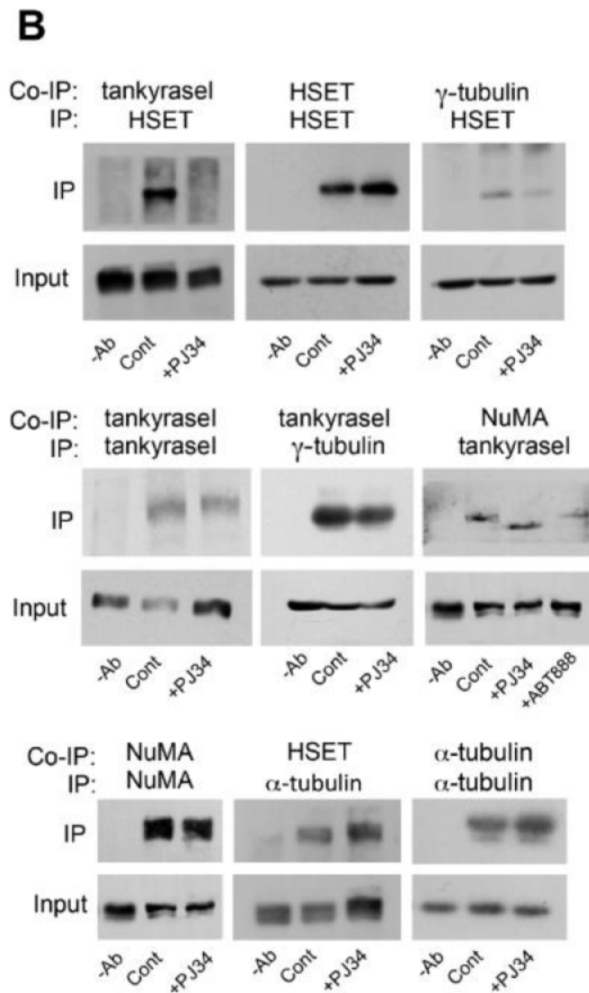


Figure 5: PJ34 inhibits NuMA and tankyrase1 polyADP-ribosylation in cancer cells. (B) The binding of tankyrase1 to γ -tubulin or NuMA was measured by co-immunoprecipitation. Their binding in MDA-MB-231 cells was not affected by treatment with PJ34 (20 μ M, 27 h). The binding of tankyrase1 to kinesin HSET/kifC1 was impaired. Representative results of 3 experiments are displayed.