

Correction: MiR-1 downregulation correlates with poor survival in clear cell renal cell carcinoma where it interferes with cell cycle regulation and metastasis

Haibing Xiao^{1,2,*}, Jin Zeng^{1,2,*}, Heng Li^{1,2}, Ke Chen^{1,2}, Gan Yu^{1,2}, Junhui Hu^{1,2}, Kun Tang^{1,2}, Hui Zhou^{1,2}, Qihong Huang³, Anping Li³, Yi Li^{1,2}, Zhangqun Ye^{1,2}, Ji Wang⁴ and Hua Xu^{1,2}

¹Department of Urology, Tongji Hospital, Tongji Medical College, Huazhong University of Science and Technology, Wuhan, China

²Institute of Urology, Tongji Hospital, Tongji Medical College, Huazhong University of Science and Technology, Wuhan, China

³The Wistar Institute, Philadelphia, PA, USA

⁴Department of Cell Death and Cancer Genetics, The Hormel Institute, University of Minnesota, Austin, MN, USA

* Haibing Xiao and Jin Zeng contributed equally to this work

Published: December 24, 2019

Copyright: Xiao et al. This is an open-access article distributed under the terms of the Creative Commons Attribution License 3.0 (CC BY 3.0), which permits unrestricted use, distribution, and reproduction in any medium, provided the original author and source are credited.

This article has been corrected: Due to errors in image selection, two small pictures were partially overlapped in Figure 3A - the mimics-NC are the same as the inhibitor-NC in the migration group of 786-O. The corrected Figure 3 is shown below. The authors declare that these corrections do not change the results or conclusions of this paper.

Original article: Oncotarget. 2015; 6:13201–13215. <https://doi.org/10.18632/oncotarget.3915>

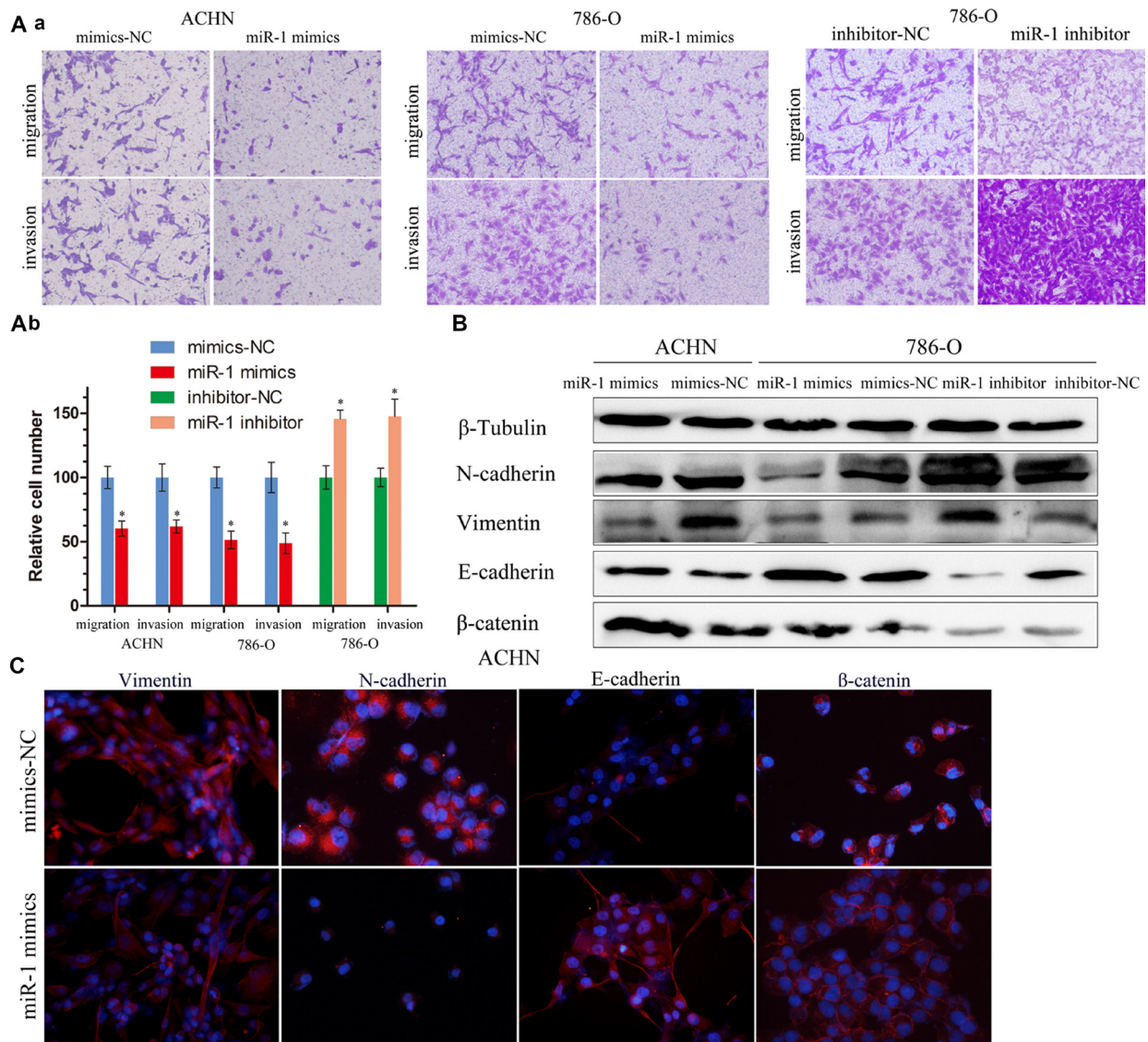


Figure 3: miR-1 attenuates ccRC cell migration and invasion. (A. a) Migration and invasion assay for renal cancer cells. Representative photographs were taken at $\times 200$ magnification; number of migrated cells was quantified in ten random images from each treatment group. (b) Results were the mean \pm SEM from two independent experiments and plotted as percent (%) migrating cells relative to mimic-NC or inhibitor-NC. $*P < 0.05$. (B) EMT-related proteins were determined by immunoblot analysis. β -Tubulin was used as loading control. (C) Representative photographs of immunofluorescence were taken at $\times 200$ magnification. ACHN cells were transfected with 100 nM of indicated small RNA molecules.