

Correction: The ratio of STAT1 to STAT3 expression is a determinant of colorectal cancer growth

Harini Nivarthi^{1,2}, Claire Gordziel³, Madeleine Themanns^{1,4}, Nina Kramer⁵, Markus Eberl⁶, Björn Rabe⁷, Michaela Schleder^{1,8}, Stefan Rose-John⁷, Thomas Knösel⁹, Lukas Kenner^{1,8}, Patricia Freund^{1,4}, Fritz Aberger⁶, Xiaonan Han¹⁰, Robert Kralovics², Helmut Dolznig⁵, Susanne Jennek³, Karlheinz Friedrich³ and Richard Moriggi^{1,4}

¹ Ludwig Boltzmann Institute for Cancer Research, Vienna, Austria

² CeMM Research Center for Molecular Medicine of the Austrian Academy of Sciences, Vienna, Austria

³ Institute of Biochemistry II, University Hospital Jena, Jena, Germany

⁴ Institute of Animal Breeding and Genetics, University of Veterinary Medicine Vienna, Medical University of Vienna, Vienna, Austria

⁵ Institute of Medical Genetics, Medical University of Vienna, Vienna, Austria

⁶ Department of Molecular Biology, University of Salzburg, Salzburg, Austria

⁷ Biochemical Institute, Christian-Albrechts-University Kiel, Kiel, Germany

⁸ Clinical Institute of Pathology, Medical University of Vienna, University of Veterinary Medicine Vienna, Vienna, Austria

⁹ Institute of Pathology, Ludwig-Maximilians-University Munich, Munich, Germany

¹⁰ Division of Gastroenterology, Hepatology and Nutrition, Cincinnati Children's Hospital Medical Center, Cincinnati, OH USA

Published: September 18, 2018

Copyright: Nivarthi et al. This is an open-access article distributed under the terms of the Creative Commons Attribution License 3.0 (CC BY 3.0), which permits unrestricted use, distribution, and reproduction in any medium, provided the original author and source are credited.

This article has been corrected: In Figure 2d, the immunofluorescence pictures of Stat1 of the cell line SW620 were accidentally duplicated to the HCT116 cell line. The corrected Figure 2d is shown below. The authors declare that these corrections do not change the results or conclusions of this paper.

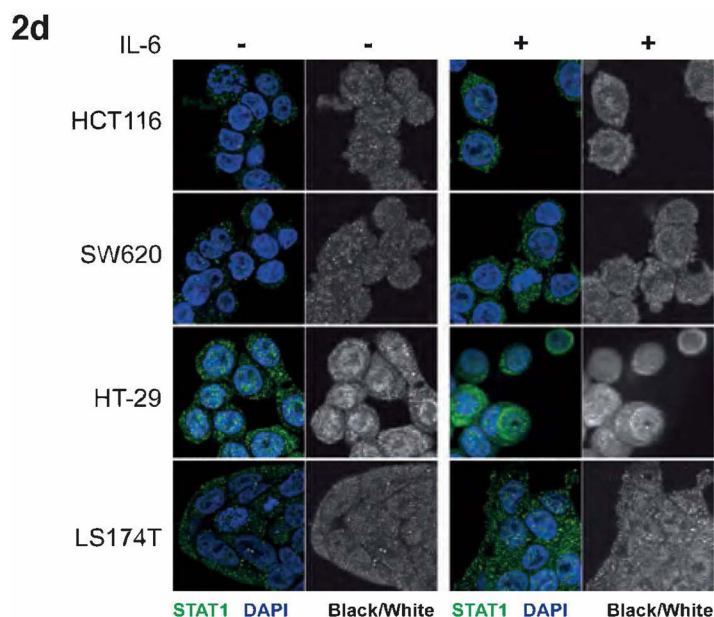


Figure 2: IL-6-dependent activation and subcellular localization of STAT3 and STAT1 in CRC cell lines. d. Immunofluorescence and confocal microscopy for detection of intracellular localization of STAT1.

Original article: Oncotarget. 2016; 7:51096-51106. <https://doi.org/10.18632/oncotarget.9315>