

Prognostic value of neutrophil-to-lymphocyte ratio in urothelial carcinoma of the upper urinary tract and bladder: a systematic review and meta-analysis

Xintao Li^{1,*}, Xin Ma^{1,*}, Lu Tang¹, Baojun Wang¹, Luyao Chen¹, Fan Zhang¹ and Xu Zhang¹

¹ Department of Urology, State Key Laboratory of Kidney Disease, Chinese PLA Medical Academy, Chinese People's Liberation Army General Hospital, Beijing, China

* These authors have contributed equally to this work

Correspondence to: Xu Zhang, email: xzhang@tjh.tjmu.edu.cn

Keywords: inflammation, neutrophil-to-lymphocyte ratio, urothelial cancer, prognosis, meta-analysis

Received: June 13, 2016

Accepted: February 20, 2017

Published: April 27, 2016

Copyright: Li et al. This is an open-access article distributed under the terms of the Creative Commons Attribution License 3.0 (CC BY 3.0), which permits unrestricted use, distribution, and reproduction in any medium, provided the original author and source are credited.

ABSTRACT

The neutrophil-to-lymphocyte ratio (NLR) is an inflammation marker that has prognostic value for various tumors, but its prognostic value in urothelial carcinoma (UC) remains controversial. This meta-analysis investigated the prognostic value of NLR in UC. A systematic search was performed on PubMed, ISI Web of Science, and Embase for studies focusing on the association between NLR and clinical features or prognosis of UC and published until November 2016. Prognostic outcomes and clinical features were collected and analyzed. A total of 11,538 patients from 32 studies were included in the meta-analysis. Increased pretreatment NLR predicted poor overall survival (hazard ratio [HR] = 1.72, 95% confidence interval [CI] = 1.45–2.05), progression free survival (HR = 1.68, 95% CI = 1.44–1.96), and cancer specific survival (HR = 1.64, 95% CI = 1.39–1.93) in all the patients. The increased pretreatment NLR was correlated with increased lymphovascular invasion (HR = 1.29, 95% CI = 1.17–1.43), high tumor T stage (HR = 1.25, 95% CI = 1.12–1.39), and tumor grade (HR = 1.07, 95% CI = 1.01–1.14) but not with lymph node involvement, carcinoma in situ, multifocality, or positive margin. Our meta-analysis indicated that NLR could predict the prognosis for UC and was associated with UC progression in terms of lymphovascular invasion, tumor T stage, and tumor grade.

INTRODUCTION

Upper tract urothelial carcinoma (UTUC) currently accounts for 5%-10% of all urologic tumors [1-3], whereas bladder cancer (BC) remains the most common malignancy of the urinary tract, the 7th most common cancer in men, and the 17th most common cancer in women [4]. Radical nephroureterectomy (RNU) and radical cystectomy (RC) are the surgical standards for muscle invasive tumors. However, the prognosis of patients undergoing RNU or RC remains poor because of the risk of disease recurrence or metastasis [4-6]. Carcinoma *in situ* (CIS) is a precursor lesion of invasive cancer and associated with an increased risk of disease progression and recurrence [7]. Neuroendocrine tumors in the bladder are rare and malignant, and these tumors are

accounted for < 1% of all urinary bladder malignancies. Approximately 60% of patients suffer from metastatic diseases at the time of diagnosis [8].

Inflammation is implicated in cancer development and progression [9, 10] and associated with poor prognosis in some cancers. Inflammation may also severely affect tumor microenvironments to facilitate cancer progression [11]. Thus, systematic inflammation markers may serve as prognostic biomarkers [12, 13]. Neutrophil-to-lymphocyte ratio (NLR) is also an indicator of general immune responses to various stress stimuli and is correlated with the prognosis of various tumor types [14-17].

The prognostic significance of pretreatment NLR in patients with UTUC or BC has been evaluated, and results have shown that NLR can be used as a prognostic marker for UC [18-23]. However, contradicting conclusions have

been presented in other studies [24, 25], and related results remain controversial. In a previous meta-analysis on the NLR of patients with UTUC and BC, NLR can predict cancer-specific survival (CSS), progression-free survival (PFS), and overall survival (OS). Nevertheless, this meta-analysis included 11 original studies and did not report the correlation between NLR and clinical features. Although NLR and UC have been extensively investigated, the relationship between NLR and urethral cancer has yet to be described. Thus, we performed a systematic review and meta-analysis on published studies to determine the predictive value of NLR for the clinical features and prognosis of UTUC and BC.

RESULTS

Search results

A flow chart of the selection of literature is shown in Figure 1. A total of 166 records were retrieved using the search strategy, and 107 of these records were obtained after duplicated studies were excluded. Of the 107 records, 30 irrelevant studies were excluded after their titles and abstracts were initially evaluated. The full texts of the 77 remaining articles were then assessed. A total of 45 records were excluded: 8 reviews, 7 letters, 3 abstracts, 2 overlapping cases, 1 logistic statistical method, 2 unrelated

to NLR, and 22 without correlation between NLR and prognosis or clinical features. The three abstracts didn't provided enough information for analysis. The manuscript using logistic statistical method didn't include follow-up information. The two unrelated studies were focused on lymphocyte to monocyte ratio and derived NLR. The full texts of the 32 remaining articles were assessed.

Overall, 32 studies with 11,538 patients were included in the meta-analysis [18-49]. These studies evaluated the prognostic value of pretreatment NLR in UC and were reported within 5 years.

Characteristics of eligible studies

The PRISMA checklist is shown in Supplemental Table 1. The detailed information on the 32 studies is listed in Supplemental Tables 2, 3, and 4. These studies included 9 from Japan, 4 from China, 4 from Korea, 3 from US, 2 from Australia, 2 from Canada, 2 from Turkey, 1 from Israel, 2 from Italy, 1 from England, 1 from Spain, and 1 from the European multicenter data. These 11,538 patients in these studies had a median number of 214 patients (range 23-2477; mean:360.6±456.9) per study. All of the studies were retrospective observational cohort studies. Of the 32 studies, 19 included non-muscle-invasive or muscle-invasive BC patients, 11 included patients with UTUC, and 2 included UC patients. All NLRs were detected before treatment was administered.

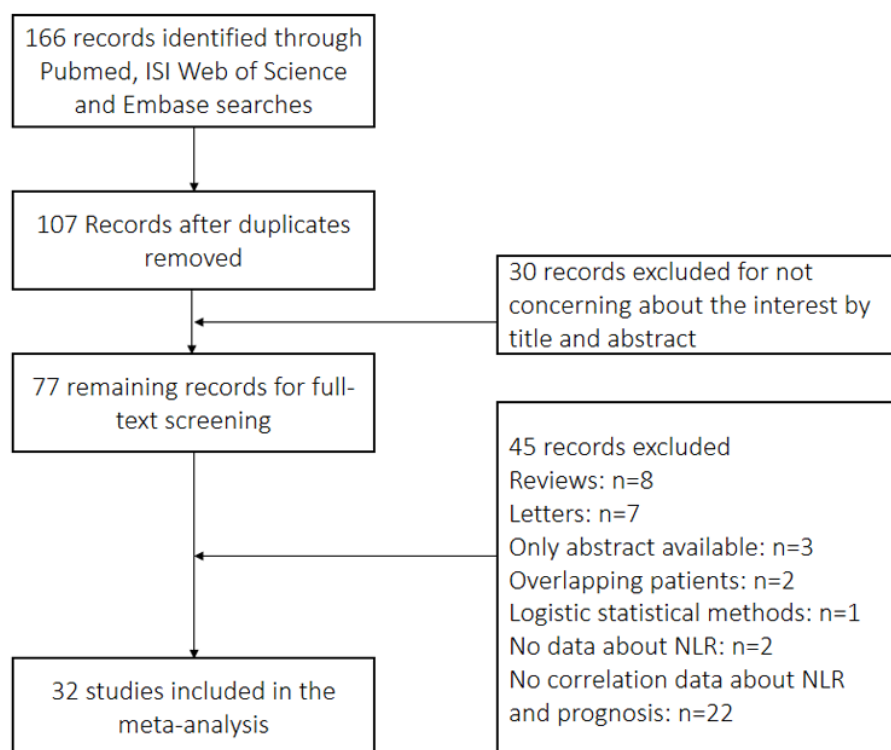


Figure 1: Flowchart of selection of studies for inclusion in meta-analysis.

Table 1: Results of the meta-analysis on predictive value of NLR in UC

	OS				PFS				CSS			
	<i>n</i>	HR	LCI	UCI	<i>n</i>	HR	LCI	UCI	<i>n</i>	HR	LCI	UCI
Overall	17	1.72	1.45	2.05	19	1.68	1.44	1.96	17	1.64	1.4	1.93
Geographic area												
1.Asian	9	1.72	1.45	2.19	12	1.8	1.51	2.15	11	1.74	1.36	2.21
2.non-Asian	8	1.73	1.54	1.95	7	1.49	1.2	1.85	6	1.56	1.23	1.99
statistical methods												
1.univariate	15	1.834	1.672	2.012	15	1.81	1.55	2.11	13	1.95	1.62	2.34
2.multivariate	9	1.91	1.43	2.57	13	1.77	1.42	2.2	12	1.66	1.35	2.04
Patient												
1.Localized	12	1.78	1.59	1.99	17	1.73	1.45	2.07	15	1.74	1.46	2.07
2.metastatic	4	1.65	1.33	2.03	2	1.52	1.18	1.96	1	1.48	1.01	2.17
sample size												
1.<230	10	1.78	1.44	2.2	8	2.36	1.71	3.27	7	1.94	1.54	2.43
2.>=230	7	1.65	1.32	2.08	11	1.54	1.31	1.81	10	1.5	1.26	1.79
NLR standard												
1.<2.65	8	1.72	1.25	2.37	9	2	1.63	2.47	7	1.92	1.35	2.74
2.>2.65	9	1.72	1.54	1.92	10	1.48	1.24	1.77	10	1.52	1.27	1.82
follow-up												
1.<=39	8	1.68	1.23	2.31	6	1.62	1.29	2.04	8	1.58	1.25	1.99
2.>39	7	1.72	1.54	1.92	11	1.66	1.36	2.03	8	1.77	1.37	2.28
tumor type												
1.UTUC	5	1.75	1.48	2.06	8	1.53	1.21	1.94	9	1.67	1.34	2.09
2.BC	11	1.71	1.35	2.16	11	1.8	1.54	2.11	8	1.65	1.26	2.18

NLR, Neutrophil-to-lymphocyte ratio; OS, overall survival; PFS, progression free survival; CSS, cancer specific survival; BC, bladder cancer; UTUC, upper tract urothelial carcinoma; HR, hazard ratio; LCI, lower confidence interval; UCI, upper confidence interval.

The following studies included patients who underwent specific procedures: 13 studies, RC; 10 studies, RNU; 6 studies, transurethral resection of bladder tumor; and 4 studies, chemotherapy with cisplatin or pemetrexed. No other therapy were provided in the original research. The median follow-up time was 40 months (range of 11.5-130.8 months). The relationship between NLR and OS was investigated in 17 cohorts (9 by multivariate analysis). The relationship between NLR and PFS were explored in 19 cohorts (13 by multivariate analysis). Lastly, the relationship between NLR and CSS were examined in 17 cohorts (12 by multivariate analysis). Furthermore, the associations between NLR and several clinical features, such as lymph node involvement (LNI), lymphovascular invasion (LVI), tumor T stage, tumor grade, CIS, multifocality, and positive margin, were investigated in 8, 9, 10, 11, 12, 9, and 6 studies, respectively.

Effect of NLR on OS in patients with UC

The association between NLR and OS was evaluated in 17 cohorts that included 4,432 patients. The OS of the patients with high pretreatment NLR was significantly

poorer than that of the patients with low NLR (HR = 1.72, 95% CI = 1.45-2.05; Figure 2 and Table 1). Significant heterogeneity among these studies was observed ($I^2 = 71.6\%$, $p < 0.001$). Thus, pooled analyses were performed using a random-effect model.

Effect of NLR on PFS in patients with UC

Of the included studies, 19 investigated the association between NLR and PFS. Among the 8,182 patients in these studies, the patients with high pretreatment NLR exhibited poorer PFS than those with low NLR did (HR = 1.68, 95% CI 1.44-1.96; Figure 3 and Table 1). Significant heterogeneity among these studies was found ($I^2 = 44.2\%$, $p = 0.021$), and these data were analyzed using a random-effect model.

Effect of NLR on CSS in patients with UC

The association between NLR and CSS was investigated in 17 studies involving 7645 patients. Similarly, the patients with high pretreatment NLR had a significantly poorer CSS than those with low NLR

Table 2: The meta-analysis of NLR and clinical features

	n	HR	LCI	UCI	Heterogeneity		Publication bias	
					Pa	I2(%)	Pc(Begg's test)	Pd(Egger'test)
LNI	8	1.358	0.93	1.983	0.006	64.8	1	0.742
LVI	9	1.29	1.17	1.43	0.426	0.9	0.602	0.707
CIS	10	1.05	0.85	1.3	0	80.1	0.721	0.917
T stage	11	1.25	1.12	1.39	0	69.6	1	0.331
tumor grade	12	1.07	1.01	1.14	0.021	50.9	0.086	0.065
multifocality	9	1.04	0.87	1.25	0.001	70.5	0.251	0.317
positive margin	6	1.45	0.96	2.19	0.135	40.6	1	0.961

NLR, Neutrophil-to-lymphocyte ratio; HR, hazard ratio; LCI, lower confidence interval; UCI, upper confidence interval; LNI, lymphnode involvement; LVI, lymphovascular invasion; CIS, carcinoma *in situ*

(HR = 1.64, 95% CI = 1.39-1.93; Figure 4 and Table 1). Significant heterogeneity among these studies was also found ($I^2 = 67.2\%$, $p < 0.001$), and pooled analysis was conducted using a random-effect model.

We explored the heterogeneity among the studies by performing subgroup and meta-regression analyses (Supplemental Table 5). In the subgroup analysis of OS, a higher pretreatment NLR was associated with poorer OS

in all of the subgroup analyses in terms of geographic area, statistical methods, tumor metastatic status, sample size, NLR standard, follow-up time, and tumor type (Table 1). The same results were achieved in the subgroup analyses of PFS and CSS.

Meta-regression analysis suggested that tumor type ($p = 0.011$) could partially account for the source of the heterogeneity of the pooled PFS and tumor type

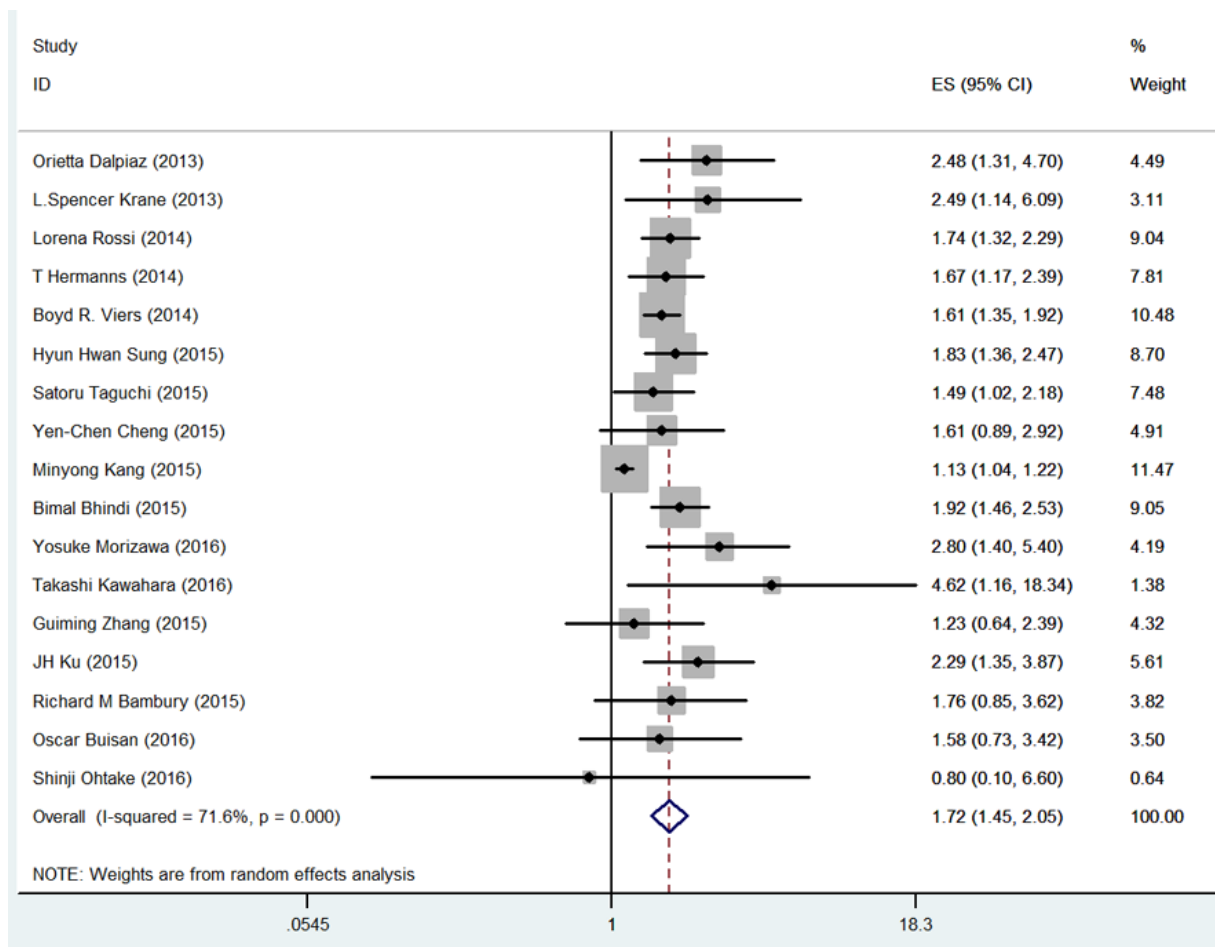


Figure 2: Meta-analysis of NLR value and OS in UC patients.

($p = 0.013$). Geographic area ($p = 0.032$) and follow-up time ($p = 0.045$) could partially explain the source of the heterogeneity of the pooled CSS analysis results.

Correlation between NLR and clinicopathological features

The correlations between NLR and clinical features of UC are presented in Table 2, and 8, 9, 10, 11, 12, 9, and 6 studies were available for the pooled analysis of LNI, LVI, tumor T stage, tumor grade, CIS, multifocality, and positive margin, respectively. NLR was positively correlated with LVI (HR = 1.29, 95% CI = 1.17-1.43), high tumor T stage (HR = 1.25, 95% CI = 1.12-1.39), and tumor grade (HR = 1.07, 95% CI = 1.01-1.14) but not with LNI, CIS, multifocality, and positive margin (Supplemental Figures 1-7).

The combined OR for LNI, CIS, and T stage was calculated using the random-effect model because of the heterogeneity among the studies. LVI, tumor grade,

multifocality, and positive margin was subjected to pooled analysis by using the fixed-effect model.

Publication bias analysis

The funnel plots for OS, PFS and CSS were symmetrical. The p-values of Begg's and Egger's tests indicated the presence of publication bias in terms of OS ($p = 0.329$ and $p = 0.414$), PFS ($p = 0.502$ and $p = 0.597$), and CSS ($p = 0.583$ and $p = 0.908$) among the included studies (Figure 5, Supplemental Figures 8 and 9).

Sensitivity analysis

A sensitivity analysis was performed by deleting one study at a time (Supplemental Figures 10-12). The changes in the pooled HRs for OS, PFS, and CSS were insignificant. Thus, our results were reliable.

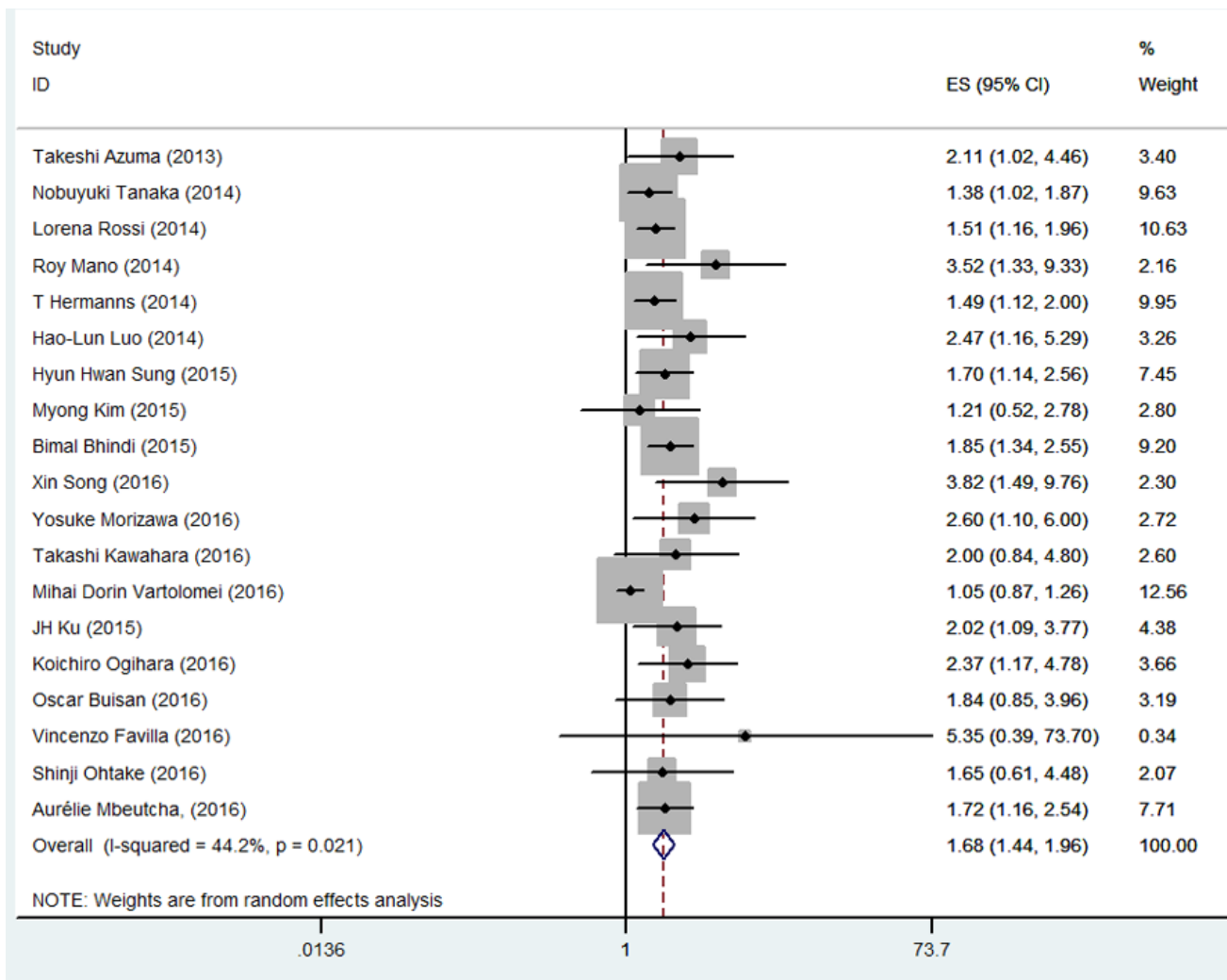


Figure 3: Meta-analysis of NLR value and PFS in UC patients.

DISCUSSION

Inflammation is a critical step in the pathogenesis and progression of cancer [9, 10]. The excess production of pro-inflammatory cytokines commonly results in an acute phase reaction in cancer patients [50]. In addition, adipose inflammation and epithelial-mesenchymal transition are involved in inflammation induced tumor initiation and progression [51, 52]. Tumors can also harness the inflammatory responses *via* various inflammatory mediators to survive and proliferate, and even fostering a tumor milieu ripe for progression and metastasis [53]. Now more evidences show that the presence of systemic inflammation is correlated with poorer survival in several cancers [54-57].

In the present meta-analysis, the results indicated that NLR not only yielded prognostic values for OS, PFS, and CSS in patients with UC but also predicted the presence of LVI, high tumor T stage, and tumor grade. With the advantage of wide availability and low cost, NLR

can be a potential marker for patient prognosis and cancer progression.

Subgroup analysis was performed because of the significance of heterogeneity among the included studies. Our results showed that higher NLR predicted poor survival in each subgroup in terms of OS, PFS, and CSS. However, the cut-off NLR has yet to be defined. Published studies used cut-off values from 2 to 5. Our analysis showed that the prediction was significant either in the standard of < 2.65 or > 2.65 subgroup. The subgroup analysis of geographic area suggested that the NLR prediction value was not affected by racial differences. Multivariate subgroup analysis implied that increased NLR independently predicted poor prognosis. The NLR predictive significance did not significantly differ between UTUC and BC. An abstract without a full text showed that NLR is an independent predictor of metastasis-free survival for nonmetastatic UTUC (2.667; 1.069-6.655; $p = 0.0355$) [58]. Albayrak S et al. [59] found that NLR couldn't predict tumor progression and recurrence of

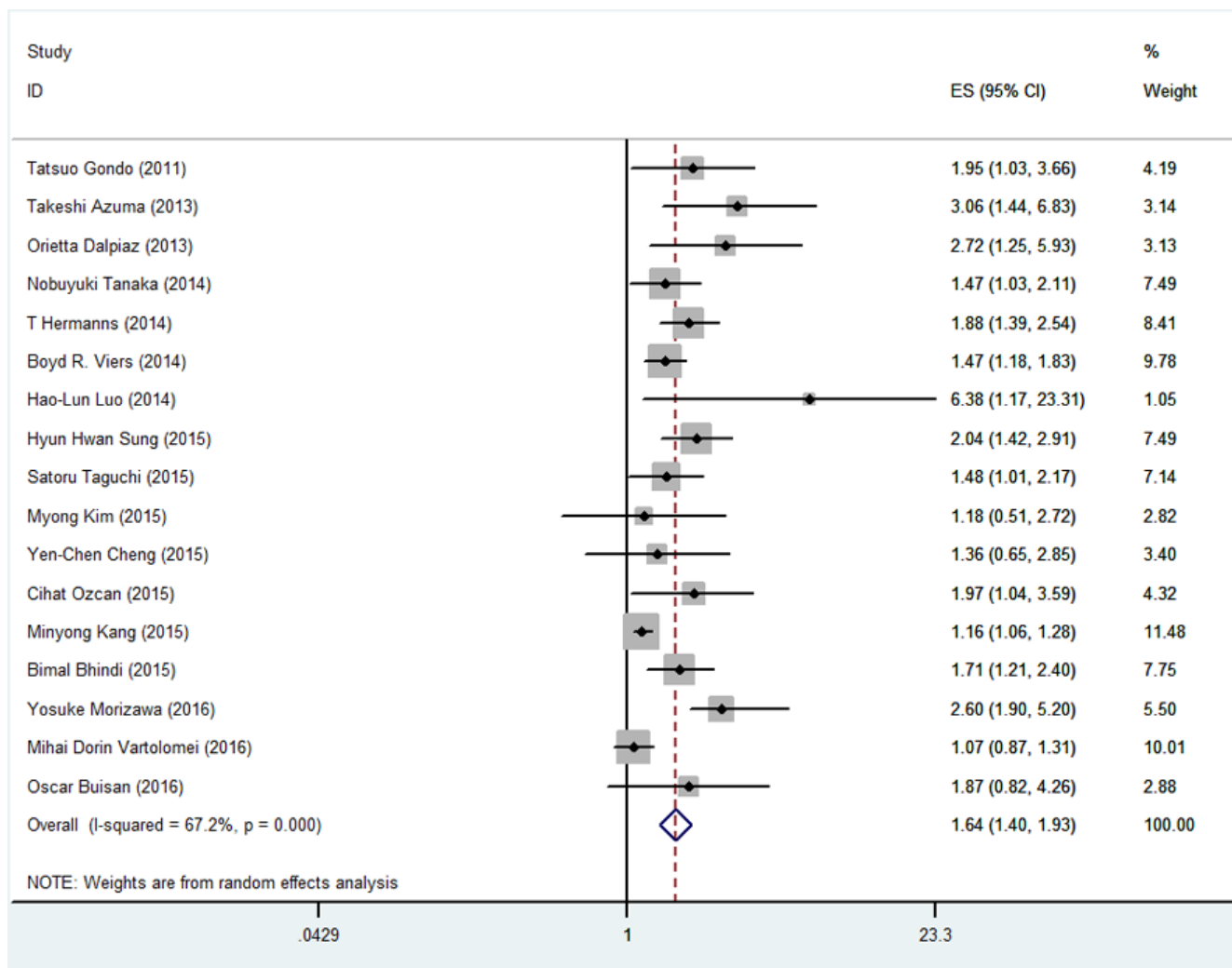


Figure 4: Meta-analysis of NLR value and CSS in UC patients.

nonmuscle invasive BC after age is corrected. However, localized and metastatic UC did not differ in our meta-analysis.

Our results showed that the high pretreatment NLR increased the presence of LVI, tumor T stage, and tumor grade. Another study concluded that higher preoperative NLR can predict patients who may be upstaged at the time of surgery [60]. Preoperative NLR may be predictive of the pathologic stage in patients with BC larger than 3 cm [61]. These results suggested that NLR may be an important factor that affected UC progression and can serve as a marker for UC progression. In other cancers, NLR is also associated with tumor invasion, lymph node metastasis, vascular invasion [14, 15, 62].

Derived NLR (neutrophil count/white cell count-neutrophil count) can also predict patient prognosis. Van Kessel et al. and Kim Myong et al. [23, 63] showed that higher derived NLR indicated poor prognosis for UTUC and muscle-invasive BC. Postoperative NLR may also be significant in predicting the prognosis. Minyong Kang et al. [29] reported that higher postoperative NLR increased

the possibility of progression and prognosis in UC patients. Increased pre- and postoperative NLRs are associated with poor oncologic outcomes. Early postoperative high NLR is also related to increased all-cause postoperative mortality. Another study on advanced UC concluded that pretherapy NLR, follow-up NLR, and change in NLR are correlated with clinical outcomes. However, pretherapy NLR cannot predict objective responses [40]. A study with a limited sample on chemotherapy has shown that changes in NLR during neoadjuvant chemotherapy are associated with pathological responses [64]. These studies showed that postoperative NLR and NLR dynamics are also valuable markers for prognosis.

Heterogeneity was observed among the included studies. Thus, most of the pooled analyses were performed using a random-effect model. Patient pretreatment characteristics, sample size, tumor type, tumor stage, cut-off NLR, and treatment were variable in the included studies. Subgroup analysis revealed that the conclusion was unaffected by these factors. Meta-regression indicated that tumor type, geographic area, and follow-up time can

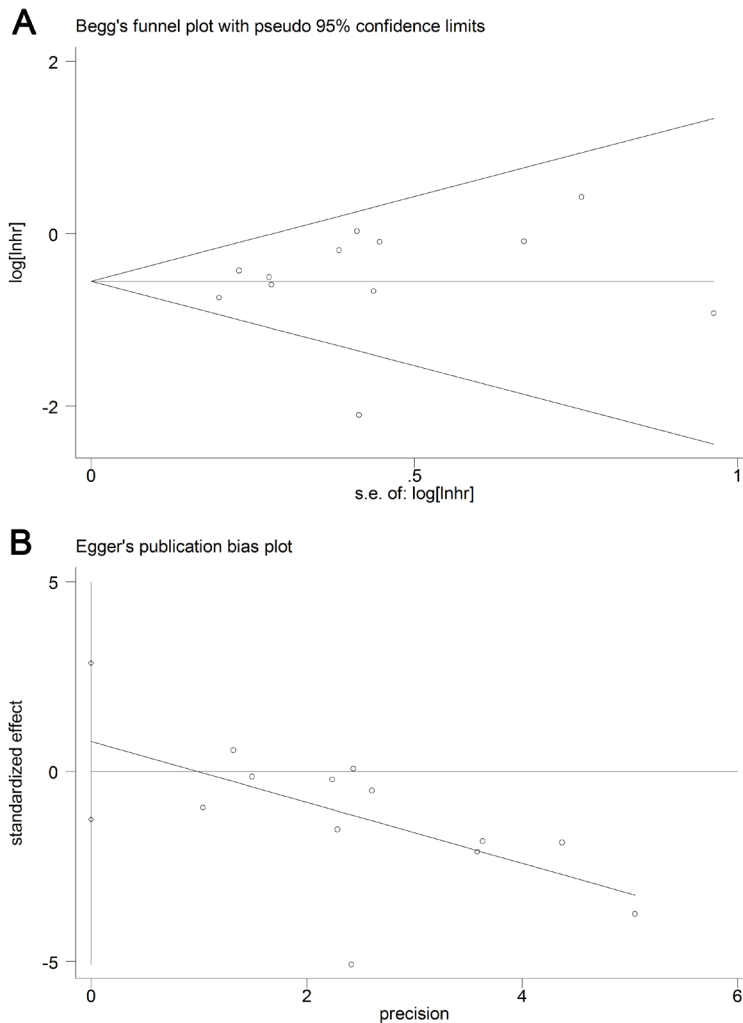


Figure 5: Begg's and Egger's test results for UC patients' OS.

account for some heterogeneity. However, sensitivity analysis demonstrated that our results were reliable.

The present meta-analysis is characterized by some limitations. First, most of the included studies were retrospective and could generate bias during data selection and analysis. Second, the cut-off NLR varied in the included studies from 2 to 5, which resulted in heterogeneity in the analysis. Third, the Newcastle-Ottawa Quality Assessment Scale (NOS) score obtained in several studies was lower than that in other studies. Some of these studies didn't compare the baseline characteristics while other studies did not provide accurate follow-up durations. Hence, these factors might influence the final results. Fourth, NLR might be affected by other causes, such as valvular heart diseases, acute coronary syndromes, liver diseases, renal diseases, hypertension, inflammatory diseases, infection, other tumor types, and medications. These factors were unlikely included in the pooled analysis.

Despite these limitations, our study supported the prognostic significance of NLR in UC. With the convenience and cost-effectiveness of available NLR, this parameter can be used for the prognostic prediction and surveillance of cancer progression.

CONCLUSIONS

NLR is a useful predictive marker for the progression of UC and prognosis of patients with UC. Patients with high pretreatment NLR exhibit poor OS, PFS, and CSS. High pretreatment NLR increases the presence of lymphovascular invasion, tumor T stage and tumor grade. These prognostic values are significant for UTUC, BC and metastatic UC. In addition, higher NLR also predicts postoperative metastasis. Postoperative NLR and derived NLR are both suggested promising prognostic markers for UC. Further studies assessing other inflammation markers in combination with NLR are required to evaluate their prognostic values in UC.

MATERIALS AND METHODS

Search strategy

A systematic literature search was performed on PubMed, ISI Web of Science, and Embase until November 2016. Search terms included "NLR," "neutrophil to lymphocyte ratio," "neutrophil-lymphocyte ratio," "bladder," "urothelial," and "tumor, cancer, neoplasm, or carcinoma." First, duplicated studies were excluded. Second, titles and abstracts were scanned thoroughly to exclude irrelevant articles. Finally, all of the full texts of the remaining articles were assessed comprehensively to identify the studies that contained the topic of interest.

Selection criteria

The studies included in the meta-analysis were randomized controlled studies or observational studies (case-control or cohort) that evaluated the association between pretreatment NLR and UC prognosis. The studies were included if they (1) included patients histopathologically diagnosed with UC, (2) provided pretreatment NLR and reported cut-off values, (3) focused on the prognosis or clinical features of UC, and (4) analyzed the associations between pretreatment NLR and survival outcomes or clinical features (OS, PFS, CSS, LNI, LVI, tumor T stage, tumor grade, CIS, multifocality and positive margin). The full texts of the studies must be available to obtain these data. The exclusion criteria were (1) non-English papers; (2) review articles, editorial comments, letters, expert opinion, conference abstracts, or case reports; (3) overlapping or duplicate data; (4) animal models or cancer cells; and (5) insufficient data for estimating HRs and 95% CIs.

All of the evaluations were conducted independently by two reviewers (X.M and L.T) to ensure the accurate inclusion of the studies. Both reviewers are urologists proficient in urology, epidemiology, and statistics. When several studies contained overlapping data, the study with the largest data was included. Multivariate outcomes were preferred over univariate outcomes if both were provided in the original study. Univariate outcomes were acceptable if no multivariate results were presented. The survival or mortality curves provided in the original study were used to calculate the values. If the manuscripts contained insufficient data, the supplemental data in these manuscripts were searched. If the data were still insufficient, we contacted the authors for additional essential data.

Data extraction

Data were extracted by two independent reviewers (X.M and L.T). Disagreements in data extraction were resolved through a consensus. The NOS was used to assess the qualities of the included studies. The evaluation included three aspects, namely selection, comparability, and outcomes in the case and control groups. Studies with scores of ≥ 6 were defined as high-quality studies. The following relevant data were extracted in a predefined table: author, year, country, tumor type, age, patient sample, follow-up duration, cut-off score, NLR (high/low), treatment, and endpoint (OS, PFS, CSS, LNI, LVI, tumor T stage, tumor grade, CIS, multifocality, and positive margin).

Some studies presented survival data using Kaplan-Meier curves. Therefore we used GetData Graph Digitizer 2.26 (<http://getdata-graph-digitizer.com/>, Russia) to digitize and extract the relevant survival data.

We calculated HRs by using the extracted data from the original studies through the methods reported by Tierney et al. [65].

The cut-off values for NLR varied among the studies. Thus, we defined the NLR standard according to the standards used in the original study.

Statistical analysis

This meta-analysis was performed using Stata version 12.0 (StataCorp LP, TX, USA), and statistical analysis was conducted according to the guidelines proposed by the Meta-analysis of Observational Studies in Epidemiology group. The associations between NLR and outcomes were reported as HRs and 95% CIs, either obtained directly from the original studies or calculated from indirect data. For the analysis of the relationship between NLR and clinical features, ORs and 95% CIs were considered effective values. Heterogeneity among the studies was determined through Q and I² tests. A fixed-effect model was performed in the absence of significant heterogeneity. Otherwise, a random-effect model was used. Potential publication bias was identified by Begg's and Egger's tests. The influence of publication bias on the overall effect was assessed by the "trim and fill" method described by Duval et al. [66]. A *p*-value of < 0.05 was considered statistically significant. All *p*-values were two tailed.

Subgroup analyses were performed to investigate the associations of NLR with clinical features and NLR and prognosis in relation to geographic area, statistical methods, tumor type (localized or metastatic status), sample size, NLR cut-off value (< 2.65 and ≥2.65), follow-up duration, and tumor type (UTUC or BC). Meta-regression was then performed to investigate the source of heterogeneity. Pooled analysis was performed on the association between NLR value and clinical features because of the limited studies. Furthermore, sensitivity analysis was performed to examine the robustness of the pooled results. The meta-analysis followed the standard PRISMA checklist.

CONFLICTS OF INTEREST

The authors have nothing to disclose.

FUNDING

The study was financially supported by the People's Republic of China and the National High Technology Research and Development Program ("863" Program) of China (2012AA02101)

REFERENCES

1. Roupret M, Zigeuner R, Palou J, Boehle A, Kaasinen E, Sylvester R, Babjuk M, Oosterlinck W. European guidelines for the diagnosis and management of upper urinary tract urothelial cell carcinomas: 2011 update. *European urology*. 2011; 59:584-594.
2. Jemal A, Siegel R, Ward E, Hao Y, Xu J, Thun MJ. Cancer statistics, 2009. *CA Cancer J Clin*. 2009; 59:225-249.
3. Humphrey PA, Moch H, Cubilla AL, Ulbright TM, Reuter VE. The 2016 WHO Classification of Tumours of the Urinary System and Male Genital Organs-Part B: Prostate and Bladder Tumours. *European urology*. 2016; 70:106-119.
4. Babjuk M, Burger M, Zigeuner R, Shariat SF, van Rhijn BW, Comperat E, Sylvester RJ, Kaasinen E, Bohle A, Palou Redorta J, Roupret M, European Association of U. EAU guidelines on non-muscle-invasive urothelial carcinoma of the bladder: update 2013. *European urology*. 2013; 64:639-653.
5. Lughezzani G, Burger M, Margulis V, Matin SF, Novara G, Roupret M, Shariat SF, Wood CG, Zigeuner R. Prognostic factors in upper urinary tract urothelial carcinomas: a comprehensive review of the current literature. *European urology*. 2012; 62:100-114.
6. Gakis G, Efstathiou J, Lerner SP, Cookson MS, Keegan KA, Guru KA, Shipley WU, Heidenreich A, Schoenberg MP, Sagalowsky AI, Soloway MS, Stenzl A, International Consultation on Urologic Disease-European Association of Urology Consultation on Bladder C. ICUD-EAU International Consultation on Bladder Cancer 2012: Radical cystectomy and bladder preservation for muscle-invasive urothelial carcinoma of the bladder. *European urology*. 2013; 63:45-57.
7. McKenney JK, Desai S, Cohen C, Amin MB. Discriminatory immunohistochemical staining of urothelial carcinoma *in situ* and non-neoplastic urothelium: an analysis of cytokeratin 20, p53, and CD44 antigens. *The American journal of surgical pathology*. 2001; 25:1074-1078.
8. Kouba E, Cheng L. Neuroendocrine Tumors of the Urinary Bladder According to the 2016 World Health Organization Classification: Molecular and Clinical Characteristics. *Endocrine pathology*. 2016; 27:188-199.
9. Coussens LM, Werb Z. Inflammation and cancer. *Nature*. 2002; 420:860-867.
10. Mantovani A, Allavena P, Sica A, Balkwill F. Cancer-related inflammation. *Nature*. 2008; 454:436-444.
11. Grivennikov SI, Greten FR, Karin M. Immunity, inflammation, and cancer. *Cell*. 2010; 140:883-899.
12. de Martino M, Klatter T, Seemann C, Waldert M, Haitel A, Schatzl G, Remzi M, Weibl P. Validation of serum C-reactive protein (CRP) as an independent prognostic factor for disease-free survival in patients with localised

- renal cell carcinoma (RCC). *BJU international*. 2013; 111:E348-353.
13. Minardi D, Scartozzi M, Montesi L, Santoni M, Burattini L, Bianconi M, Lacetera V, Milanese G, Cascinu S, Muzzonigro G. Neutrophil-to-lymphocyte ratio may be associated with the outcome in patients with prostate cancer. *SpringerPlus*. 2015; 4:255.
 14. Tang L, Li X, Wang B, Luo G, Gu L, Chen L, Liu K, Gao Y, Zhang X. Prognostic Value of Neutrophil-to-Lymphocyte Ratio in Localized and Advanced Prostate Cancer: A Systematic Review and Meta-Analysis. *PLoS one*. 2016; 11:e0153981.
 15. Yodying H, Matsuda A, Miyashita M, Matsumoto S, Sakurazawa N, Yamada M, Uchida E. Prognostic Significance of Neutrophil-to-Lymphocyte Ratio and Platelet-to-Lymphocyte Ratio in Oncologic Outcomes of Esophageal Cancer: A Systematic Review and Meta-analysis. *Annals of surgical oncology*. 2016; 23:646-654.
 16. Sun J, Chen X, Gao P, Song Y, Huang X, Yang Y, Zhao J, Ma B, Gao X, Wang Z. Can the Neutrophil to Lymphocyte Ratio Be Used to Determine Gastric Cancer Treatment Outcomes? A Systematic Review and Meta-Analysis. *Disease markers*. 2016; 2016:7862469.
 17. Serdarevic M, Kukulj S, Nikolic I, Taradi I, Romic Z, Samarzija M. 203P: Could neutrophil-to-lymphocyte ratio be predictor of brain metastases in non small cell lung cancer? *Journal of thoracic oncology*. 2016; 11:S145.
 18. Azuma T, Matayoshi Y, Odani K, Sato Y, Sato Y, Nagase Y, Oshi M. Preoperative neutrophil-lymphocyte ratio as an independent prognostic marker for patients with upper urinary tract urothelial carcinoma. *Clinical genitourinary cancer*. 2013; 11:337-341.
 19. Bhindi B, Hermanns T, Wei Y, Yu J, Richard PO, Wettstein MS, Templeton A, Li K, Sridhar SS, Jewett MA, Fleshner NE, Zlotta AR, Kulkarni GS. Identification of the best complete blood count-based predictors for bladder cancer outcomes in patients undergoing radical cystectomy. *British journal of cancer*. 2016; 114:207-212.
 20. Dalpiaz O, Ehrlich GC, Mannweiler S, Hernandez JM, Gerger A, Stojakovic T, Pummer K, Zigeuner R, Pichler M, Hutterer GC. Validation of pretreatment neutrophil-lymphocyte ratio as a prognostic factor in a European cohort of patients with upper tract urothelial carcinoma. *BJU international*. 2014; 114:334-339.
 21. Gondo T, Nakashima J, Ohno Y, Choichiro O, Horiguchi Y, Namiki K, Yoshioka K, Ohori M, Hatano T, Tachibana M. Prognostic value of neutrophil-to-lymphocyte ratio and establishment of novel preoperative risk stratification model in bladder cancer patients treated with radical cystectomy. *Urology*. 2012; 79:1085-1091.
 22. Hermanns T, Bhindi B, Wei Y, Yu J, Noon AP, Richard PO, Bhatt JR, Almatar A, Jewett MA, Fleshner NE, Zlotta AR, Templeton AJ, Kulkarni GS. Pre-treatment neutrophil-to-lymphocyte ratio as predictor of adverse outcomes in patients undergoing radical cystectomy for urothelial carcinoma of the bladder. *British journal of cancer*. 2014; 111:444-451.
 23. Kim M, Moon KC, Choi WS, Jeong CW, Kwak C, Kim HH, Ku JH. Prognostic value of systemic inflammatory responses in patients with upper urinary tract urothelial carcinoma. *World journal of urology*. 2015; 33(10):1439-1457.
 24. Cheng YC, Huang CN, Wu WJ, Li CC, Ke HL, Li WM, Tu HP, Li CF, Chang LL, Yeh HC. The Prognostic Significance of Inflammation-Associated Blood Cell Markers in Patients with Upper Tract Urothelial Carcinoma. *Annals of surgical oncology*. 2016; 23:343-351.
 25. Vartolomei MD, Mathieu R, Margulis V, Karam JA, Roupert M, Lucca I, Mbeutcha A, Seitz C, Karakiewicz PI, Fajkovic H, Wood CG, Weizer AZ, Raman JD, et al. Promising role of preoperative neutrophil-to-lymphocyte ratio in patients treated with radical nephroureterectomy. *World journal of urology*. 2016.
 26. Luo HL, Chen YT, Chuang YC, Cheng YT, Lee WC, Kang CH, Chiang PH. Subclassification of upper urinary tract urothelial carcinoma by the neutrophil-to-lymphocyte ratio (NLR) improves prediction of oncological outcome. *BJU international*. 2014; 113:E144-E149.
 27. Bambury RM, Benjamin DJ, Chaim JL, Zabor EC, Sullivan J, Garcia-Grossman IR, Regazzi AM, Ostrovnya I, Apollo A, Xiao H, Voss MH, Iyer G, Bajorin DF, et al. The safety and efficacy of single-agent pemetrexed in platinum-resistant advanced urothelial carcinoma: a large single-institution experience. *The oncologist*. 2015; 20:508-515.
 28. Ku JH, Kang M, Kim HS, Jeong CW, Kwak C, Kim HH. The prognostic value of pretreatment of systemic inflammatory responses in patients with urothelial carcinoma undergoing radical cystectomy. *British journal of cancer*. 2015; 112:461-467.
 29. Kang M, Jeong CW, Kwak C, Kim HH, Ku JH. The Prognostic Significance of the Early Postoperative Neutrophil-to-Lymphocyte Ratio in Patients with Urothelial Carcinoma of the Bladder Undergoing Radical Cystectomy. *Annals of surgical oncology*. 2016; 23:335-342.
 30. Ozcan C, Telli O, Ozturk E, Suer E, Gokce MI, Gulpinar O, Oztuna D, Baltaci S, Gogus C. The prognostic significance of preoperative leukocytosis and neutrophil-to-lymphocyte ratio in patients who underwent radical cystectomy for bladder cancer. *Canadian Urological Association journal = Journal de l'Association des urologues du Canada*. 2015; 9:E789-794.
 31. Viers BR, Boorjian SA, Frank I, Tarrell RF, Thapa P, Karnes RJ, Thompson RH, Tollefson MK. Pretreatment neutrophil-to-lymphocyte ratio is associated with advanced pathologic tumor stage and increased cancer-specific mortality among patients with urothelial carcinoma of the bladder undergoing radical cystectomy. *European urology*. 2014; 66:1157-1164.
 32. Taguchi S, Nakagawa T, Matsumoto A, Nagase Y, Kawai T, Tanaka Y, Yoshida K, Yamamoto S, Enomoto Y, Nose

- Y, Sato T, Ishikawa A, Uemura Y, Fujimura T, Fukuhara H, Kume H, et al. Pretreatment neutrophil-to-lymphocyte ratio as an independent predictor of survival in patients with metastatic urothelial carcinoma: A multi-institutional study. *International Journal of Urology*. 2015; 22:638-643.
33. Krane LS, Richards KA, Kader AK, Davis R, Balaji KC, Hemal AK. Preoperative neutrophil/lymphocyte ratio predicts overall survival and extravesical disease in patients undergoing radical cystectomy. *Journal of Endourology*. 2013; 27:1046-1050.
 34. Zhang GM, Zhu Y, Luo L, Wan FN, Zhu YP, Sun LJ, Ye DW. Preoperative lymphocyte-monocyte and platelet-lymphocyte ratios as predictors of overall survival in patients with bladder cancer undergoing radical cystectomy. *Tumour biology : the journal of the International Society for Oncodevelopmental Biology and Medicine*. 2015; 36:8537-8543.
 35. Lee SM, Russell A, Hellawell G. Predictive value of pretreatment inflammation-based prognostic scores (Neutrophil-to-lymphocyte ratio, platelet-to-lymphocyte ratio, and lymphocyte-to-monocyte ratio) for invasive bladder carcinoma. *Korean journal of urology*. 2015; 56:749-755.
 36. Mano R, Baniel J, Shoshany O, Margel D, Bar-On T, Nativ O, Rubinstein J, Halachmi S. Neutrophil-to-lymphocyte ratio predicts progression and recurrence of non-muscle-invasive bladder cancer. *Urologic Oncology: Seminars and Original Investigations*. 2015; 33:67e61-67e67.
 37. Kawahara T, Furuya K, Nakamura M, Sakamaki K, Osaka K, Ito H, Ito Y, Izumi K, Ohtake S, Miyoshi Y, Makiyama K, Nakaigawa N, Yamanaka T, et al. Neutrophil-to-lymphocyte ratio is a prognostic marker in bladder cancer patients after radical cystectomy. *BMC cancer*. 2016; 16:185.
 38. Morizawa Y, Miyake M, Shimada K, Hori S, Tatsumi Y, Nakai Y, Anai S, Tanaka N, Konishi N, Fujimoto K. Neutrophil-to-lymphocyte ratio as a detection marker of tumor recurrence in patients with muscle-invasive bladder cancer after radical cystectomy. *Urologic oncology*. 2016; 34:257.e211-257.
 39. Tanaka N, Kikuchi E, Kanao K, Matsumoto K, Shirotake S, Miyazaki Y, Kobayashi H, Kaneko G, Hagiwara M, Ide H, Obata J, Hoshino K, Hayakawa N, et al. A Multi-Institutional Validation of the Prognostic Value of the Neutrophil-to-Lymphocyte Ratio for Upper Tract Urothelial Carcinoma Treated with Radical Nephroureterectomy. *Annals of surgical oncology*. 2014; 21:4041-4048.
 40. Rossi L, Santoni M, Crabb SJ, Scarpi E, Burattini L, Chau C, Bianchi E, Savini A, Burgio SL, Conti A, Conteduca V, Cascinu S, De Giorgi U. High Neutrophil-to-lymphocyte Ratio Persistent During First-line Chemotherapy Predicts Poor Clinical Outcome in Patients with Advanced Urothelial Cancer. *Annals of surgical oncology*. 2015; 22:1377-1384.
 41. Song X, Zhang GM, Ma XC, Luo L, Li B, Chai DY, Sun LJ. Comparison of preoperative neutrophil-lymphocyte, lymphocyte-monocyte, and platelet-lymphocyte ratios in patients with upper urinary tract urothelial carcinoma undergoing radical nephroureterectomy. *OncoTargets and therapy*. 2016; 9:1399-1407.
 42. Sung HH, Jeon HG, Jeong BC, Seo SI, Jeon SS, Choi HY, Lee HM. Clinical significance of prognosis using the neutrophil-lymphocyte ratio and erythrocyte sedimentation rate in patients undergoing radical nephroureterectomy for upper urinary tract urothelial carcinoma. *BJU international*. 2015; 115:587-594.
 43. Kaynar M, Yildirim ME, Badem H, Cavis M, Tekinarslan E, Istanbuloglu MO, Karatas OF, Cimentepe E. Bladder cancer invasion predictability based on preoperative neutrophil-lymphocyte ratio. *Tumour biology*. 2014; 35:6601-6605.
 44. Ogihara K, Kikuchi E, Yuge K, Yanai Y, Matsumoto K, Miyajima A, Asakura H, Oya M. The Preoperative Neutrophil-to-lymphocyte Ratio is a Novel Biomarker for Predicting Worse Clinical Outcomes in Non-muscle Invasive Bladder Cancer Patients with a Previous History of Smoking. *Annals of surgical oncology*. 2016.
 45. Buisan O, Orsola A, Areal J, Font A, Oliveira M, Martinez R, Ibarz L. Low Pretreatment Neutrophil-to-Lymphocyte Ratio Predicts for Good Outcomes in Patients Receiving Neoadjuvant Chemotherapy Before Radical Cystectomy for Muscle Invasive Bladder Cancer. *Clinical genitourinary cancer*. 2016.
 46. Favilla V, Castelli T, Urzi D, Reale G, Privitera S, Salici A, Russo GI, Cimino S, Morgia G. Neutrophil to lymphocyte ratio, a biomarker in non-muscle invasive bladder cancer: a single-institutional longitudinal study. *International braz j urol*. 2016; 42:685-693.
 47. Ohtake S, Kawahara T, Kasahara R, Ito H, Osaka K, Hattori Y, Teranishi JI, Makiyama K, Mizuno N, Umemoto S, Miyoshi Y, Nakaigawa N, Miyamoto H, et al. Pretreatment Neutrophil-to-Lymphocyte Ratio Can Predict the Prognosis in Bladder Cancer Patients Who Receive Gemcitabine and Nedaplatin Therapy. *BioMed research international*. 2016; 2016:9846823.
 48. Mbeutcha A, Shariat SF, Rieken M, Rink M, Xylinas E, Seitz C, Lucca I, Mathieu R, Roupert M, Briganti A, Karakiewicz PI, Klatter T. Prognostic significance of markers of systemic inflammatory response in patients with non-muscle-invasive bladder cancer. *Urologic oncology*. 2016; 34:483 e417-483 e424.
 49. Kishimoto N, Takao T, Kuribayashi S, Yamamichi G, Nakano K, Kawamura M, Tsutahara K, Tanigawa G, Yamaguchi S. The neutrophil-to-lymphocyte ratio as a predictor of intravesical recurrence in patients with upper urinary tract urothelial carcinoma treated with radical nephroureterectomy. *International journal of clinical oncology*. 2016.
 50. Esper DH, Harb WA. The cancer cachexia syndrome: a review of metabolic and clinical manifestations. *Nutrition*

in clinical practice : official publication of the American Society for Parenteral and Enteral Nutrition. 2005; 20:369-376.

51. Ma HY, Liu XZ, Liang CM. Inflammatory microenvironment contributes to epithelial-mesenchymal transition in gastric cancer. *World journal of gastroenterology*. 2016; 22:6619-6628.
52. Iyengar NM, Gucalp A, Dannenberg AJ, Hudis CA. Obesity and Cancer Mechanisms: Tumor Microenvironment and Inflammation. *Journals of clinical oncology*. 2016; 34:4270-4276.
53. Michelson N, Rincon-Torroella J, Quinones-Hinojosa A, Greenfield JP. Exploring the role of inflammation in the malignant transformation of low-grade gliomas. *Journal of neuroimmunology*. 2016; 297:132-140.
54. Kawahara T, Ishiguro H, Hoshino K, Teranishi J, Miyoshi Y, Kubota Y, Uemura H. Analysis of NSAID-activated gene 1 expression in prostate cancer. *Urologia internationalis*. 2010; 84:198-202.
55. Ishiguro H, Kawahara T. Nonsteroidal anti-inflammatory drugs and prostatic diseases. *BioMed research international*. 2014; 2014:436123.
56. Gunter MJ, Stolzenberg-Solomon R, Cross AJ, Leitzmann MF, Weinstein S, Wood RJ, Virtamo J, Taylor PR, Albanes D, Sinha R. A prospective study of serum C-reactive protein and colorectal cancer risk in men. *Cancer research*. 2006; 66:2483-2487.
57. Ohno Y, Nakashima J, Ohori M, Hatano T, Tachibana M. Pretreatment neutrophil-to-lymphocyte ratio as an independent predictor of recurrence in patients with nonmetastatic renal cell carcinoma. *The Journal of urology*. 2010; 184:873-878.
58. Hashimoto T, Ohno Y, Nakashima J, Gondo T, Ohori M, Hatano T, Tachibana M. Prognostic significance of preoperative neutrophil-to-lymphocyte ratio in patients with non-metastatic upper tract urothelial carcinoma. *Journal of Urology*. 2012; 187:e258-e259.
59. Albayrak S, Zengin K, Tanik S, Atar M, Unal SH, Imamoglu MA, Gurdal M. Can the neutrophil-to-lymphocyte ratio be used to predict recurrence and progression of non-muscle-invasive bladder cancer? *The Kaohsiung journal of medical sciences*. 2016; 32:327-333.
60. Potretzke A, Hillman L, Wong K, Shi F, Brower R, Mai S, Cetnar JP, Abel EJ, Downs TM. NLR is predictive of upstaging at the time of radical cystectomy for patients with urothelial carcinoma of the bladder. *Urologic Oncology: Seminars and Original Investigations*. 2014; 32:631-636.
61. Celik O, Akand M, Keskin MZ, Yoldas M, Ilbey YO. Preoperative neutrophil-to-lymphocyte ratio (NLR) may be predictive of pathologic stage in patients with bladder cancer larger than 3 cm. *European review for medical and pharmacological sciences*. 2016; 20:652-656.
62. Xue TC, Zhang L, Xie XY, Ge NL, Li LX, Zhang BH, Ye SL, Ren ZG. Prognostic significance of the neutrophil-to-lymphocyte ratio in primary liver cancer: a meta-analysis. *PloS one*. 2014; 9:e96072.
63. van Kessel KE, de Haan LM, Fransen van de Putte EE, van Rhijn BW, de Wit R, van der Heijden MS, Zwarthoff EC, Boormans JL. Elevated Derived Neutrophil-to-Lymphocyte Ratio Corresponds With Poor Outcome in Patients Undergoing Pre-Operative Chemotherapy in Muscle-Invasive Bladder Cancer. *Bladder cancer*. 2016; 2:351-360.
64. Seah JA, Leibowitz-Amit R, Atenafu EG, Alimohamed N, Knox JJ, Joshua AM, Sridhar SS. Neutrophil-Lymphocyte Ratio and Pathological Response to Neoadjuvant Chemotherapy in Patients with Muscle-Invasive Bladder Cancer. *Clinical genitourinary cancer*. 2015; 13:e229-e233.
65. Tierney JF, Stewart LA, Ghersi D, Burdett S, Sydes MR. Practical methods for incorporating summary time-to-event data into meta-analysis. *Trials*. 2007; 8:16.
66. Duval S, Tweedie R. Trim and fill: A simple funnel-plot-based method of testing and adjusting for publication bias in meta-analysis. *Biometrics*. 2000; 56:455-463.