

# MALAT1 predicts poor survival in osteosarcoma patients and promotes cell metastasis through associating with EZH2

Yanqing Huo<sup>1</sup>, Qingbo Li<sup>1</sup>, Xiqian Wang<sup>1</sup>, Xiejia Jiao<sup>1</sup>, Jiachun Zheng<sup>1</sup>, Zhiqiang Li<sup>1</sup> and Xiaohan Pan<sup>2</sup>

<sup>1</sup>Department of Orthopedics, The Second Hospital of Shandong University, Jinan, 250133, Shandong Province, China

<sup>2</sup>Department of Health Management, The Second Hospital of Shandong University, Jinan, 250133, Shandong Province, China

Correspondence to: Xiaohan Pan, email: xiaohanpan@163.com

Keywords: MALAT1, osteosarcoma, TGF- $\beta$ , metastasis, EZH2

Received: January 25, 2017

Accepted: March 06, 2017

Published: March 24, 2017

Copyright: Huo et al. This is an open-access article distributed under the terms of the Creative Commons Attribution License 3.0 (CC BY 3.0), which permits unrestricted use, distribution, and reproduction in any medium, provided the original author and source are credited.

## ABSTRACT

Osteosarcoma is the most common type of bone cancer, especially in children and young adults. Recently, long noncoding RNAs (lncRNAs) have emerged as new prognostic markers and gene regulators in several cancers, including osteosarcoma. In this study, we investigated the contributions of the lncRNA MALAT1 in osteosarcoma with a specific focus on its transcriptional regulation and its interaction with EZH2. Our results showed that MALAT1 was significantly increased in osteosarcoma specimens and cell lines. ROC curve analysis showed that MALAT1 had a higher area under the curve than alkaline phosphatase, and Kaplan-Meier survival analysis indicated that patients with high serum levels of MALAT1 showed reduced survival rate. Knockdown of MALAT1 decreased osteosarcoma cell invasion and promoted E-cadherin expression. Mechanistic investigations showed that MALAT1 was transcriptionally activated by TGF- $\beta$ . Additionally, EZH2 is highly expressed and associated with the 3' end region of lncRNA MALAT1 in osteosarcoma, and this association finally suppressed the expression of E-cadherin. Subsequently, our gain and loss function assay showed that MALAT1 overexpression promoted cell metastasis and decreased E-cadherin level, however, this effect was partially reversed by EZH2 knockdown. In conclusion, our work illuminates that lncRNA MALAT1 is a potential diagnostic and prognostic factor in osteosarcoma and further demonstrates how MALAT1 confers an oncogenic function. Thus, lncRNA MALAT1 may serve as a promising prognostic and therapeutic target for osteosarcoma patients.

## INTRODUCTION

Osteosarcoma, primarily affecting adolescents and young adults, is among the most frequently occurring primary bone tumors [1]. Approximately 80% of osteosarcoma patients have metastatic disease at the time of diagnosis, and metastasis is a consistent problem in tumor prognosis and treatment [2]. The 5-year overall survival is approximately 65% and the best predictor of long-term survival is the absence of metastatic disease at diagnosis [2]. While the molecular mechanism of osteosarcoma has gained considerable attention, the mechanisms underlying its initiation and progression remain unclear, the most likely candidates are the activation of oncogenes or silence of

suppressor genes [3, 4]. Currently, surgical resection with subsequent radiotherapy and chemotherapy has dramatically improved the clinical outcome of osteosarcoma patients. However, they finally become resistant and pulmonary metastasis. Further exploration of this area will help in the development of effective strategies in the diagnosis, treatment and prognosis of osteosarcoma.

Long noncoding RNAs (lncRNAs) are defined as transcripts > 200 nucleotides in length and are transcribed but non-translated noncoding RNAs in human genome [5]. Recent studies demonstrated that lncRNAs played important roles in carcinogenesis and cancer metastasis, and deregulated expression of lncRNAs has been found in cancers including osteosarcoma [6]. The discovery and

study of lncRNAs is thus of major relevance to human biology and disease, as they represent an extensive, largely unexplored, and functional component of the genome [7, 8].

Several lncRNAs (PVT1, UCA1, HOTTIP and LINC00161) have been reported to be involved in osteosarcoma progression [9-12]. The metastasis-associated lung adenocarcinoma transcript 1 (MALAT1), is located on the chromosome 11q13 and was firstly found as a predictive biomarker for metastasis in the early stage of non-small cell lung cancer and then in other cancers [13]. A variety of reports have found that MALAT1 was upregulated in different malignancies including breast cancer, bladder cancer and hepatocellular cancer [14-16]. For osteosarcoma, Luo et al revealed that MALAT1 can promote osteosarcoma development by targeting TGFA via MIR376A [17]. Dong et al demonstrated that MALAT1 promoted the proliferation and metastasis of osteosarcoma cells by activating the PI3K/Akt pathway [18]. However, it is still not well known why MALAT1 is deregulated and how MALAT1 participates in metastasis in osteosarcoma. Additionally, the transcription of MALAT1 is initiated from multiple promoters [17]. So far, it is still unclear which of these promoters is predominantly used and which factors regulate the selection or drive the expression.

Enhancer of Zeste Homolog 2 (EZH2), a critical component of polycomb repressive complex 2 (PRC2), functions as a histone H3 Lysine 27 (H3K27) methyltransferase in target gene promoters and inhibits specific gene expression [19]. EZH2 has frequently been found to be overexpressed in a variety of human cancers including osteosarcoma [20]. More importantly, studies demonstrated that MALAT1 interacted with EZH2 and facilitated its recruitment to gene promoter in renal and gastric cancer [21, 22], but this was not reported in osteosarcoma. Thus, the study on the regulatory mode between lncRNA MALAT1 and EZH2 in osteosarcoma is a meaningful work.

In our study, we investigated the clinical and experimental function of MALAT1 in osteosarcoma. We determined the reason for MALAT1 overexpression in osteosarcoma, and further verified the downstream effects of MALAT1 in osteosarcoma. Our preliminary study found that MALAT1 is a diagnostic and prognostic factor and activated by the transcription factor TGF- $\beta$  in osteosarcoma. Moreover, the functional assay indicates that MALAT1 promoted osteosarcoma metastasis through interacting with EZH2.

## RESULTS

### LncRNA MALAT1 is up-regulated in osteosarcoma specimens and cell lines

RT-qPCR was used to detect MALAT1 expression in 68 primary osteosarcoma tissues and paired adjacent noncancerous tissues, normalized to GAPDH. Our results showed that MALAT1 was up-regulated in primary

osteosarcoma tissues compared to noncancerous tissues ( $P < 0.001$ , Figure 1A). Additionally, the osteosarcoma tissues in 66.2% (45 of 68) of cases had at least 2-fold higher expression of MALAT1 than noncancerous tissues (Figure 1B). We also detected the serum levels of MALAT1 in 46 osteosarcoma patients and 40 healthy individuals, and the results also indicated a significant higher MALAT1 expression in osteosarcoma patients than in healthy controls ( $P < 0.001$ , Figure 1C). Subsequently, the MALAT1 expression in four osteosarcoma cell lines (MG-63, SAOS-2, U2OS, SW1353) and one osteoblastic cell line (hFOB) were also determined. As shown in Figure 1D, MALAT1 was up-regulated in all the four osteosarcoma cell lines compared with normal osteoblastic cells.

### The diagnostic and prognostic value of MALAT1 in osteosarcoma patients

After having discovered the up-regulation of MALAT1 in osteosarcoma, we further investigated the diagnostic and prognostic role of cell-free MALAT1. Firstly, we analyzed the association of serum levels of MALAT1 with clinicopathological factors. Serum level of MALAT1 was significantly correlated with tumor size and distant metastasis, but not correlated with other factors such as age, sex, differentiation, and TNM stage (Table 1). Subsequently, Receiver operating characteristic (ROC) analysis was used to evaluate the diagnostic performance of MALAT1. The area under the ROC curve (AUC) for MALAT1 was 0.834 (95% confidence interval [CI] = 0.738–0.906) and the optimal cut-off value was 3.68, providing a sensitivity of 80.43 % and a specificity of 72.50 % (Figure 2A). We then compared the diagnostic performance of MALAT1 with alkaline phosphatase (ALP), a traditional serum biomarker for detecting bone tumors. The AUC of serum ALP was 0.747, with a diagnostic sensitivity of 70.43% and specificity of 57.5% (Figure 2B). The AUC of MALAT1 was markedly higher than that of ALP ( $P < 0.05$ ). More importantly, combined detection of MALAT1 and ALP increased the diagnostic sensitivity (82.61%) and specificity (82.50%) (Figure 2C).

The role of MALAT1 in prognosis of osteosarcoma patients was also investigated. We divided the patients into a high and a low expressing group by using the median value (4.43) of 46 serum samples. The 5-year overall survival rate of the osteosarcoma patients whose tumors expressed high levels of MALAT1 was 39.1% (18/46), which was significantly lower than that of the patients whose tumors expressed low levels of MALAT1 (56.5%, 26/46). More importantly, the Kaplan-Meier analysis indicated that patients with high expression of MALAT1 was associated with poor overall survival and progressive free survival compared with the low expressing patients (Figure 2D and 2E).

**Table 1: Association of MALAT1 expression with clinical parameters in 68 osteosarcoma patients [median (interquartile range)]**

Characteristics	Number	Serum MALAT1 expression	P-value
Gender			0.759
Male	39	3.34 (0.20-6.69)	
Female	29	3.45 (0.57-7.68)	
Age (years)			0.473
<40	33	3.11 (0.20-6.42)	
≥40	35	3.41 (0.48-5.47)	
Tumor size			0.008
<6cm	38	2.37 (0.20-7.68)	
≥6cm	30	4.39 (1.07-4.96)	
differentiation			0.218
Well	23	3.17 (0.20-6.54)	
Moderate	32	3.46 (0.42-7.17)	
Poor	13	3.79 (1.21-7.68)	
Lung metastasis			0.000
Yes	22	2.16 (0.20-7.02)	
No	46	5.56 (2.99-7.68)	
TNM stage			0.058
I-II	31	3.02 (0.20-6.15)	
III-IV	37	3.98 (0.78-7.68)	

### TGF-β is involved in the regulation of MALAT1 expression

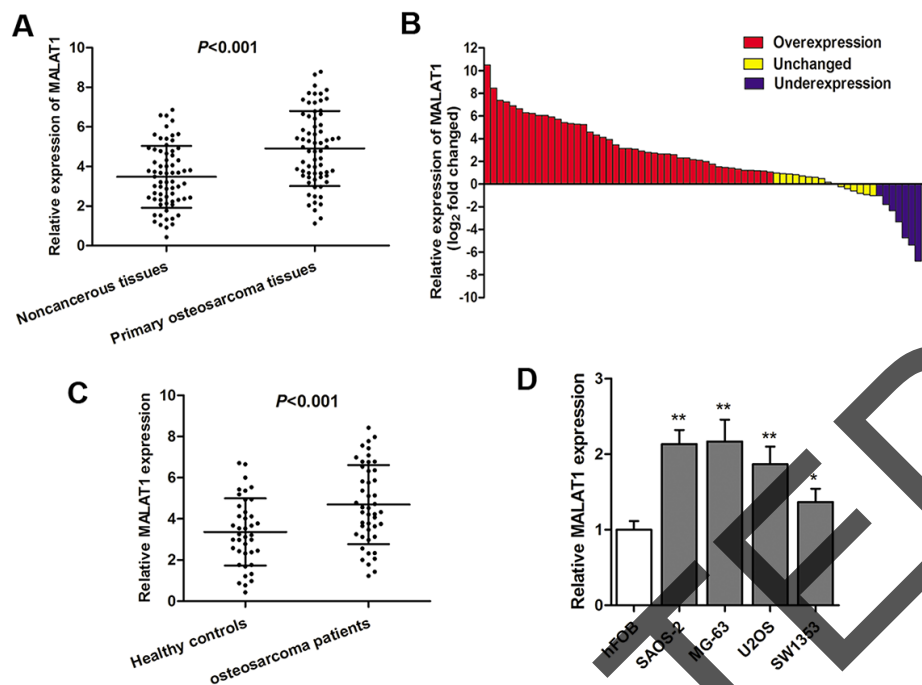
Since our data revealed an up-regulation of MALAT1 in the osteosarcoma patients, we then determine the underlying mechanism that may explain the clinical observations. Thus, we focused on transcription factors binding to the MALAT1 promoter. We selected TGF-β because Chen et al [24] found that TGF-β functioned as a potent stimulator of osteosarcoma cell epithelial-mesenchymal transition. As expected, TGF-β mRNA expression was significantly increased in osteosarcoma tissues compared with the paired noncancerous tissues (Figure 3A). Additionally, a positive correlation between MALAT1 and TGF-β mRNA expression was found in primary osteosarcoma tissues. Subsequently, TGF-β over-expressing plasmids, pTGF-β, was generated (Figure 3C), and enhanced TGF-β significantly promoted MALAT1 expression level in both MG-63 and SAOS-2 cells (Figure 3D). Subsequently, luciferase vector containing the TGF-β binding sites was then constructed to verify the direct interaction between TGF-β and MALAT1. Dual luciferase reporter assay showed that luciferase vector containing TGF-β binding sites had higher luciferase activity than negative control vector both cell lines. To conclude, we identified that overexpression of MALAT1 was at least partially due to the activation by TGF-β in osteosarcoma.

### Knockdown of MALAT1 impairs migration and invasion of osteosarcoma cells

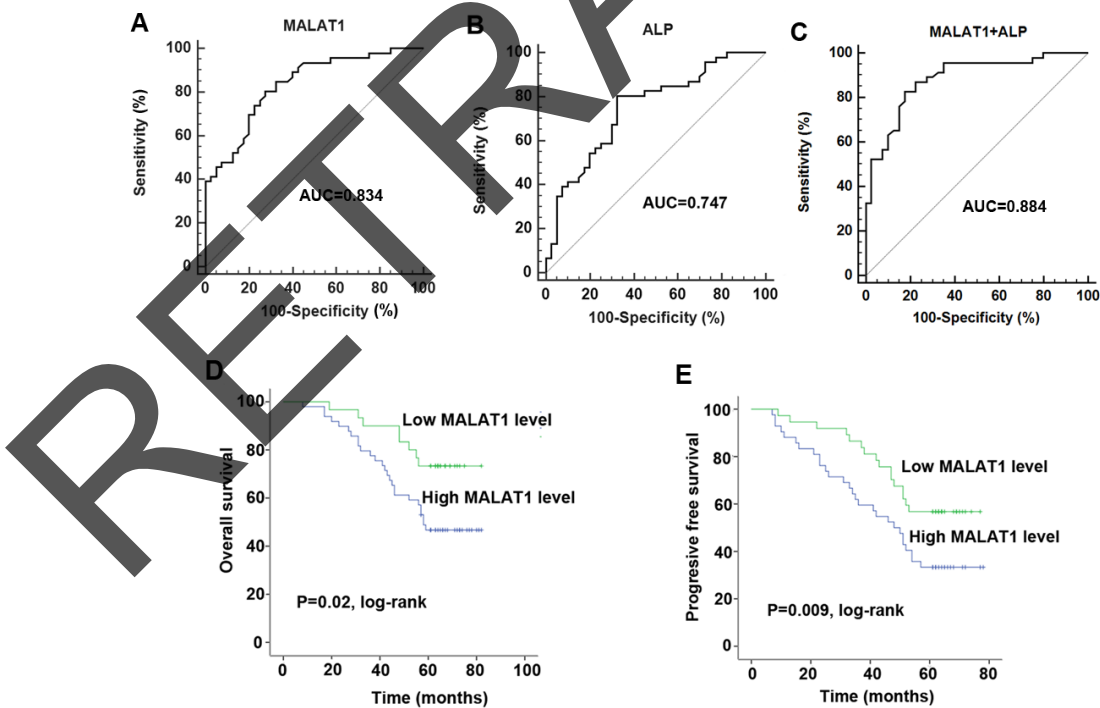
As lncRNA MALAT1 was identified as an oncogene associated with tumor metastasis in various cancers [13, 17, 18], we investigated the effect of MALAT1 on cell migration and invasion. Figure 4A indicated that the siMALAT1-2 showed a better knockdown effect compared with the siMALAT1-1 vector, and siMALAT1-1 was chosen for further experiments. The wound-healing assay and matrigel invasion assay indicated a significant decreased cell migratory and invasive capacity in osteosarcoma cells that transfected with siMALAT1-1 compared with the negative control (Figure 4B and 4C). Subsequently, we also determined whether E-cadherin expression was regulated by MALAT1. As expected, western blot assay showed that E-cadherin protein was significantly up-regulated after siMALAT1 transfection (Figure 4D).

### EZH2 is highly expressed and interacts mostly with the 3' end region of MALAT1 in osteosarcoma

Various reports have indicated that the MALAT1 may exert its function through interaction with EZH2,



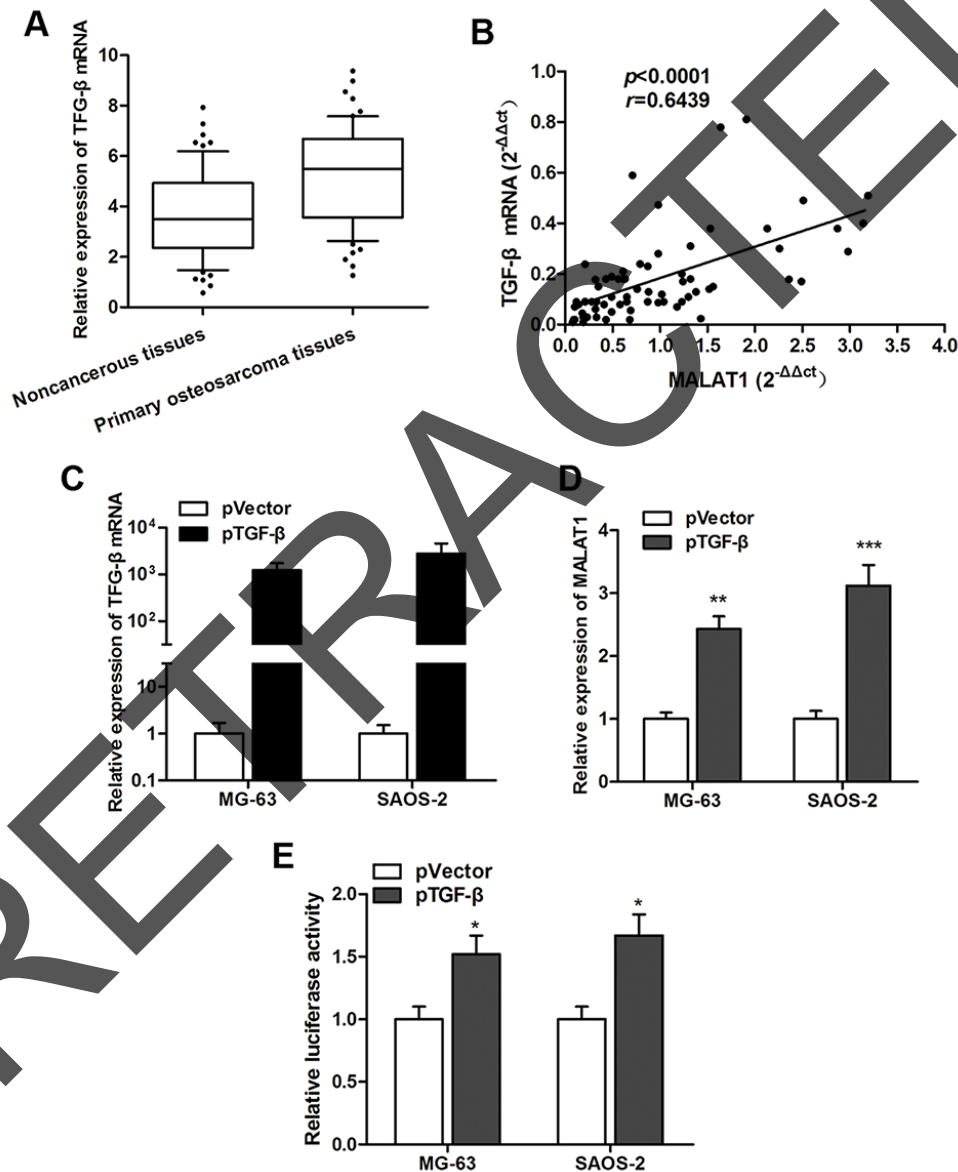
**Figure 1: LncRNA MALAT1 is up-regulated in osteosarcoma specimens and cell lines.** (A) RT-qPCR showed that MALAT1 expression was significantly increased in primary osteosarcoma tissues compared with non-cancerous; (B) The MALAT1 expression level was analyzed using RT-qPCR and expressed as  $\log_2$  fold change (CRC/normal), and the  $\log_2$  fold changes were presented as follows:  $>1$ , overexpression (45 cases);  $<1$ , underexpression (8 cases); the remainder were defined as unchanged (15 cases); (C) Serum levels of MALAT1 was significantly increased in osteosarcoma patients compared with healthy individuals; (D) MALAT1 was significantly upregulated in four osteosarcoma cell lines compared with normal osteoblastic cells.



**Figure 2: The investigation of diagnostic and prognostic value of MALAT1 in osteosarcoma.** (A-C) ROC curve analysis was performed to investigate the diagnostic value of MALAT1 (A), ALP (B) and combined detection of MALAT1 and ALP (C) in discriminating osteosarcoma patients and healthy individuals; (D-E) Kaplan-Meier curves for OS (D) and PFS (E) according to serum levels of MALAT1 in osteosarcoma patients.

a subunit of PRC2 [21, 22, 25]. To verify the potential pathway, we firstly determined EZH2 expression in osteosarcoma specimens. Results showed that EZH2 mRNA was upregulated in primary osteosarcoma tissues and serums (Figure 5A and 5B). Additionally, a significant up-regulation of EZH2 mRNA and protein was also found in four osteosarcoma cell lines compared to normal osteoblastic cells (Figure 5C and 5D). Moreover, the spearman correlation testing indicated a significant positive association between EZH2 mRNA and MALAT1 expression levels in primary osteosarcoma tissues ( $r=0.6175$ , Figure 5E).

Subsequently, RIP assay was performed with an antibody against EZH2 from nuclear extracts of osteosarcoma cells. As MALAT1 contains more than 8000 bps, EZH2 protein can only precipitate the MALAT1 fragments that are responsible for the interaction. To achieve a more explicit understanding, 6 MALAT1 fragments (M1-M6), covering the whole sequence from 5' end to 3' end, were separately detected by RT-qPCR with an independent set of primers (Figure 5F). The RIP results showed that MALAT1 can interact with EZH2 (Figure 5G). Moreover, the region containing the nucleotides 7501-8708 at the 3' end of



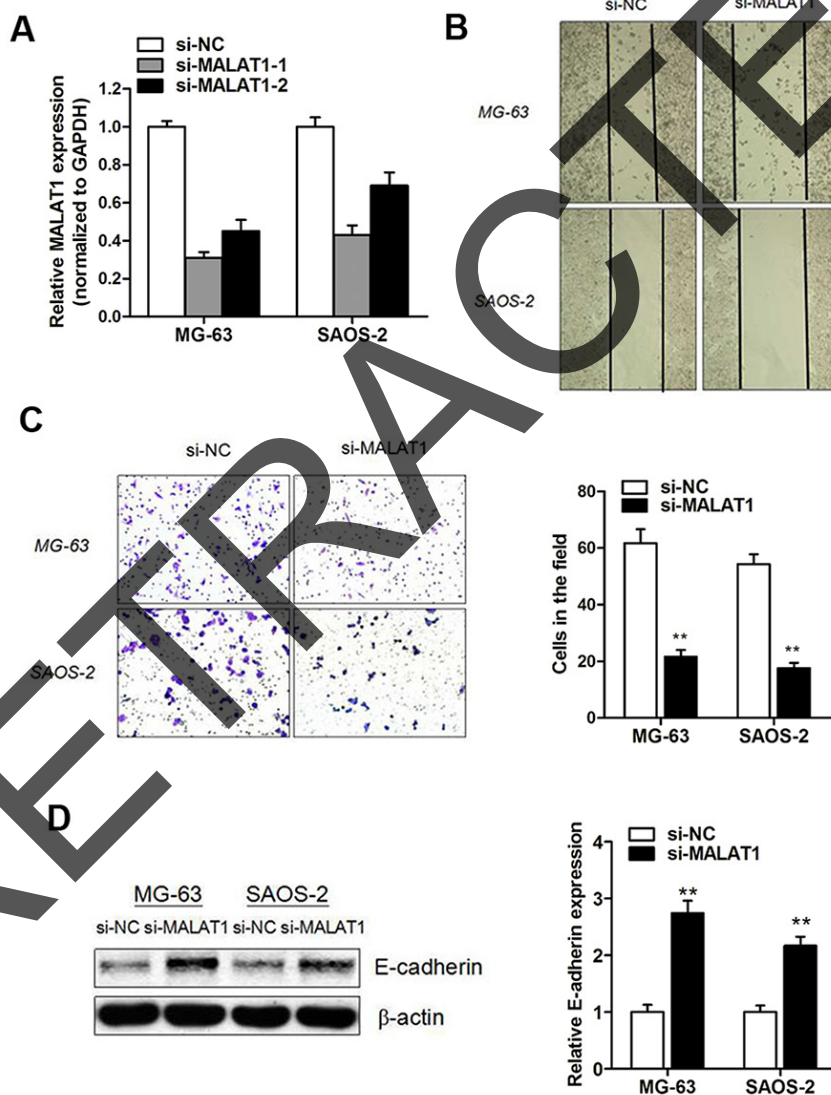
**Figure 3: TGF-β is involved in the regulation of MALAT1 expression.** (A) TGF-β mRNA expression level was significantly upregulated in primary osteosarcoma tissues compared to noncancerous tissues; (B) Spearman correlation test indicated a positive correlation between MALAT1 expression and TGF-β mRNA expression in primary osteosarcoma tissues; (C) TGF-β expression was significantly increased in osteosarcoma cells transfected with pTGF-β; (D) MALAT1 was upregulated by TGF-β overexpression; (E) Luciferase activity was significantly increased in TGF-β-transfected cells compared with control vector in MG-63 and SAOS-2 cells.

MALAT1 interacted most strongly with EZH2 (Figure 5H), but there was no enrichment of  $\beta$ -actin or lncRNA control (Figure 5I). These data indicate that MALAT1 directly interacts with the EZH2, and EZH2 interacts with the 3' end region of MALAT1.

### Knockdown of MALAT1 increases E-cadherin level through the interaction with EZH2

To determine that E-cadherin is regulated by EZH2, we analyzed the effect of EZH2 on E-cadherin expression. Spearman correlation testing indicated that EZH2 mRNA expression was negatively correlated with E-cadherin mRNA expression. Then, we silenced

EZH2 with siEZH2 in osteosarcoma cells (Figure 6B). EZH2 knockdown significantly increased E-cadherin mRNA levels in osteosarcoma cells (Figure 6C). Take a step further, we used ChIP analysis to determine that MALAT1-EZH2 complex had histone modification effect in E-cadherin promoter by using anti-EZH2 and anti-H3K27-me3 antibody in MG-63 cells. Specific primers were designed in three regions of E-cadherin promoter (Figure 6D), and the enrichment levels by the anti-EZH2 and anti-H3K27-me3 were dramatically suppressed by si-MALAT1 (Figure 6E and 6F), while binding level of IgG with E-cadherin promoter showed no significant change when MALAT1 was inhibited (Figure 6G), indicating that the association between



**Figure 4: Knockdown of MALAT1 promoted osteosarcoma cell migration and invasion capacity.** (A) MALAT1 expression level was significantly suppressed in osteosarcoma cells after transfection of si-MALAT1-1 and si-MALAT1-2; (B) Wound-healing assay showed that MALAT1 knockdown significantly suppressed osteosarcoma cell migration capacity; (C) Matrigel invasion assay indicated that MALAT1 knockdown significantly impaired osteosarcoma cell invasion capacity; (D) Western blot assay showed that E-cadherin protein expression was downregulated by transfection of si-MALAT1.

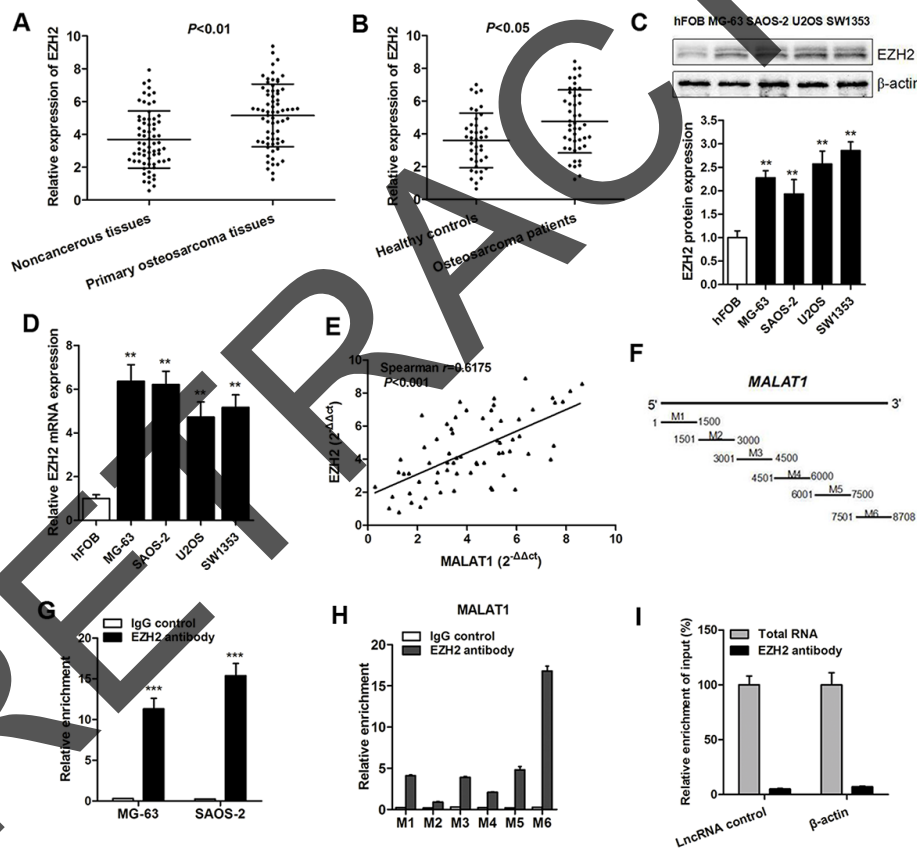
EZH2 and the E-cadherin promoter is specifically regulated by MALAT1.

### MALAT1 promotes cell migration and invasion through EZH2 in osteosarcoma

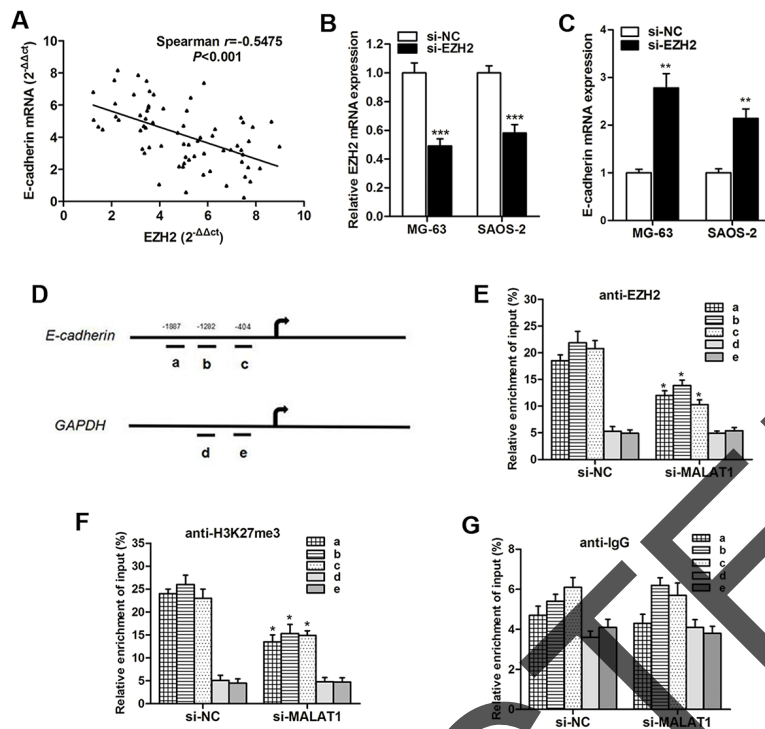
We then determined the role of EZH2 in cell metastasis. As shown in Figure 7A and 7B, cell migratory and invasive ability were significantly impaired by transfection of siEZH2. Based on the above results, we further investigated whether EZH2 mediated MALAT1-induced enhanced cell metastasis. Over expressing MALAT1 plasmid pMALAT1 was transfected into osteosarcoma cells, and the cell migration and invasion assay showed that pMALAT1 significantly promoted cell migration and invasion. However, this increased metastasis ability caused by MALAT1 was significantly reversed by siEZH2 co-transfection (Figure 7C and 7D). Thus, we concluded that MALAT1 promoted cell metastasis through associating with EZH2.

### DISCUSSION

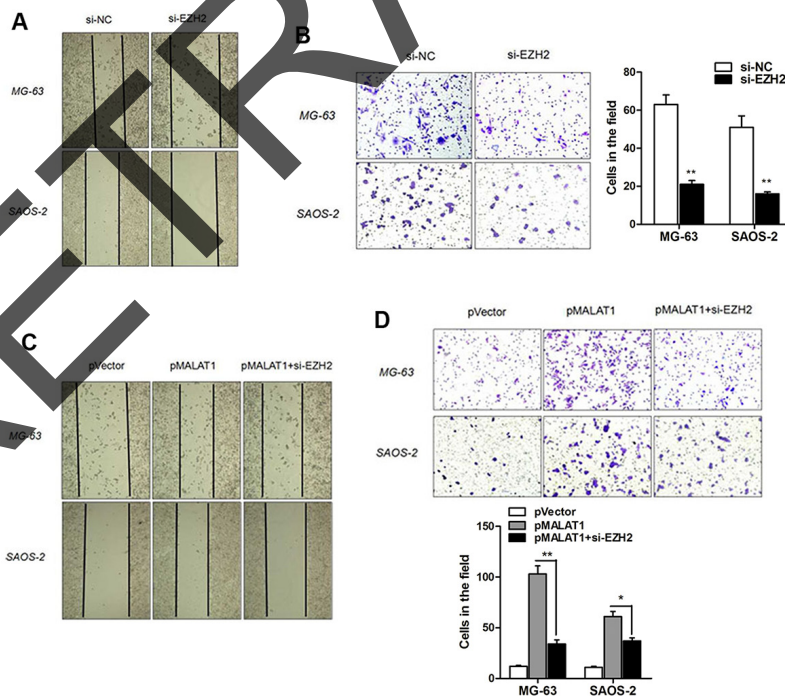
Recent advances in the non-protein coding part of human genome analysis have discovered extensive transcription of large RNA transcripts that lack coding protein function, termed non-coding RNA [26, 27]. It is becoming evident that lncRNAs may be an important class of pervasive genes involved in carcinogenesis and metastasis. Currently, pulmonary metastasis is a major reason of death for patients with osteosarcoma, revealing effective prognostic factor and therapeutic target could help improve treatment strategies to overcome metastatic osteosarcoma. The aim of this study is to investigate the clinical significance of MALAT1 expression in human osteosarcoma and further investigate the potential regulatory mechanism by which MALAT1 participate in osteosarcoma progression. The present study demonstrated that MALAT1 was significantly up-regulated in osteosarcoma. Additionally, MALAT1 expression was significantly correlated with tumor size



**Figure 5: EZH2 is highly expressed and interacts mostly with the 3' end region of MALAT1 in osteosarcoma.** (A) EZH2 mRNA expression was significantly increased in primary osteosarcoma tissues (A) and serum (B) compared to healthy control; (C-D) EZH2 protein (C) and mRNA (D) expression was significantly upregulated in the four osteosarcoma cell lines compared with normal osteoblastic cells; (E) A positive correlation was found between MALAT1 expression and EZH2 mRNA expression in primary osteosarcoma tissues by Spearman analysis; (F) Schematic diagram of MALAT1 regions M1-M6 separately determined by RT-qPCR using an independent set of primers; (G-H) RIP experiments were performed using the EZH2 antibody to immunoprecipitate RNA (G) and an independent set of primers to detect different regions of MALAT1 (H); (I) RIP experiments were performed using an EZH2 antibody to immunoprecipitate RNA and primers to detect lncRNA control and  $\beta$ -actin.



**Figure 6: Knockdown of MALAT1 increases E-cadherin expression by associating with EZH2.** (A) A negative correlation was found between EZH2 mRNA and E-cadherin mRNA expression; (B) EZH2 expression was significantly suppressed by si-EZH2 transfection; (C) E-cadherin mRNA was significantly upregulated after EZH2 was silenced; (D-G) ChIP analysis of SW620 treated with si-MALAT1 was conducted on E-cadherin promoter (primer a-c) and GAPDH promoter (primer d-e) regions using the indicated antibodies. Enrichment was determined relative to input controls. These results show data from at least three independent experiments. \*,  $P < 0.05$ ; \*\*,  $P < 0.01$ ; \*\*\*,  $P < 0.001$ .



**Figure 7: MALAT1 promotes cell migration and invasion through EZH2.** (A-B) EZH2 knockdown impaired osteosarcoma cell migration (A) and invasion (B) ability; (C-D) MALAT1 overexpression significantly promoted cell migration and invasion, however, this increased metastasis ability caused by MALAT1 was significantly reversed by siEZH2 co-transfection.

and distant metastasis, and was an independent prognostic factor of overall survival for osteosarcoma patients. More importantly, we further uncovered that MALAT1 was activated by TGF- $\beta$ , and promoted cell migration and invasion through associated with EZH2 in osteosarcoma.

In this study, we firstly investigated the role of MALAT1 in diagnosing and predicting osteosarcoma patients. Previous studies have demonstrated the prognostic value of MALAT1 in human cancer, and patients with enhanced level of MALAT1 had a higher risk of poor outcome in gastric cancer, esophageal squamous cell carcinoma, colorectal cancer and osteosarcoma [28-31]. Our results are partially consistent with previous studies and further revealed the value of cell-free MALAT1 in osteosarcoma patients. Utilizing lncRNA expression level in peripheral blood to diagnose tumors early may be effective strategy and deserved to be explored further because lncRNA is very stable in blood plasma and serum. More importantly, serum testing is more convenient and noninvasive. Therefore, it is important to identify serum markers that predict the initiation and progression of osteosarcoma, which may allow for the improvement of early detection rate. With this purpose, our ROC analysis and Kaplan-Meier survival analysis identified that serum lncRNA MALAT1 expression has considerable diagnostic and prognostic significance in discriminating osteosarcoma patients and non-tumor patients.

We attempted to unravel the molecular switch of MALAT1 in controlling this malignant phenotype of osteosarcoma. Previous reports indicated that several transcription factors are upregulated in malignancies and induce activation of lncRNAs [32-34]. To verify the underlying regulatory mechanism by which MALAT1 was activated in osteosarcoma patients, we concentrated on TGF- $\beta$ , since TGF- $\beta$  functioned as a potent stimulator of epithelial-to-mesenchymal transition in osteosarcoma cell. TGF- $\beta$  is reported to diversely participate in the function of cancer cells through promoting migration, invasion and cell EMT process [24]. We found that TGF- $\beta$  expression was significantly increased, and positive correlated with the expression of MALAT1 in primary osteosarcoma tissues. More importantly, luciferase assay indicated a direct interaction between TGF- $\beta$  and MALAT1 in osteosarcoma cells, suggesting that TGF- $\beta$  activated MALAT1 in osteosarcoma.

It is well known that MALAT1 regulates tumor cell migration, invasion and the metastasis in various cancer entities, particularly lung cancer [13]. However, the role of MALAT1 in osteosarcoma metastasis is largely unknown. Thus, we evaluated the role of MALAT1 in osteosarcoma cell migration and invasion. Our data indicated that MALAT1 silencing dramatically suppressed the cell metastasis and promoted E-cadherin expression in osteosarcoma. On this basis, we further investigated

the potential regulatory pathway by which MALAT1 exerted its function. Recent studies reported that many lncRNAs including MALAT1 can interact with PRC2 in various cancers [35, 36]. EZH2, working with EED and SUZ12, the other two essential components of the PRC2, functions primarily as a methyltransferase catalyzing H3K27me3 and promoting gene silencing [37]. Thus, the association between MALAT1 and EZH2 may be an important regulatory pattern in human cancers. Previously, Gupta and colleagues reported that HOTAIR induced genome-wide retargeting of PRC2, leading to H3K27me3, and promoted metastasis of breast cancer by silencing multiple metastasis suppressor genes [35]. On the other hand, Sun et al demonstrated that long non-coding RNA EBIC promotes tumor cell invasion by binding to EZH2 and repressing E-Cadherin in cervical cancer [38]. For osteosarcoma, previous study found that overexpression of EZH2 is associated with the poor prognosis in osteosarcoma and function analysis indicates a therapeutic potential [20]. However, there is no direct evidence about the role of interaction between specific lncRNAs and EZH2 in osteosarcoma. In our work, we validated the up-regulation of EZH2 in osteosarcoma specimens and cell lines. The RIP results showed that MALAT1 specifically interacted with EZH2, and EZH2 was mostly associated with the 3' end of the MALAT1 region.

As a core catalytic subunit of PRC2, EZH2 has an essential role in the epigenetic maintenance of the H3K27me3 repressive chromatin mark [39]. EMT is a process initially observed in embryonic development in which cells lose epithelial characteristics and gain mesenchymal properties to increase motility and invasion including osteosarcoma [40]. E-cadherin is a key cell-cell adhesion molecular associated with EMT of tumor cell. Thus, we investigated the effect of EZH2 on E-cadherin expression. EZH2 knockdown significantly increased E-cadherin levels in osteosarcoma cells. Furthermore, ChIP analysis indicated that MALAT1 decreases E-cadherin expression through EZH2-mediated H3K27me3 formation. The gain and loss function assay also showed that EZH2 reversed the MALAT1-induced enhanced cell metastasis and suppression of E-cadherin expression in osteosarcoma. Collectively, we demonstrated that MALAT1 promotes osteosarcoma cell metastasis through EZH2-induced suppression of E-cadherin.

In conclusion, our integrated approach demonstrates that lncRNA MALAT1 is a potential diagnostic biomarker and associated with prognosis in osteosarcoma patients. MALAT1 is activated by transcription factor TGF- $\beta$ , and the enhanced expression of MALAT1 further promotes metastasis and suppresses E-cadherin expression through EZH2. Thus, lncRNA MALAT1 may be a potential prognostic and therapeutic target in osteosarcoma. Suppression of MALAT1 could be a future direction to promote the clinical outcome of osteosarcoma patients.

**Table 2: Information of the RT-qPCR primer sequences and siRNA sequences**

<b>RT-qPCR primer name</b>	<b>primer sequence (5'-3')</b>
MALAT1 (Forward)	GGGTGTTTACGTAGACCAGAACC
MALAT1 (Reverse)	CTTCCAAAAGCCTTCTGCCTTAG
EZH2 (Forward)	GGCTCCTCTAACCATGTTTACAAC
EZH2 (Reverse)	AGCGGTTTTGACACTCTG AACTAC
E-cadherin (Forward)	TCT TCCAGGAACCTCTGTGATG
E-cadherin (Reverse)	CAATGCCGCCATCGCTTACACC
GAPDH (Forward)	GCACCGTCAAGGCTGAGAAC
GAPDH (Reverse)	ATGGTGGTGAAGACGCCAGT
<b>RIP -qPCR primer name</b>	<b>primer sequence (5'-3')</b>
M1 (Forward)	TTGAGGCGTTTTCCAAGAGT
M1 (Reverse)	CGGTTGAGAAGTGGCAAAAT
M2 (Forward)	GACGGAGGTTGAGATGAAGC
M2 (Reverse)	ATTCGGGGCTCTGTAGTCCT
M3 (Forward)	CCCACCCCTTAATCAGACT
M3 (Reverse)	CAACAGCACAGCGGTACTACT
M4 (Forward)	GTGTGCCAATGTTTCGYTTG
M4 (Reverse)	AGGAGAAAGTGCCATGGTTG
M5 (Forward)	AAAGCAAGGTCTCCCCACAAG
M5 (Reverse)	GGTCTGTGCTAGATCAAAAGGCA
M6 (Forward)	CTCCCCACAAGCAACTTCTC
M6 (Reverse)	TTCAACCCACCAAAGACCTC
<b>ChIP-qPCR primer name</b>	<b>primer sequence (5'-3')</b>
E-Cadherin-a (Forward)	TGGATCATCTGAGGACAGGA
E-Cadherin-a (Reverse)	CCACCACGACTGGCTAATTT
E-Cadherin-b (Forward)	AGTCCCACAACAGCATAGGG
E-Cadherin-b (Reverse)	TCCCTAGGTCAGGACCACCT
E-Cadherin-c (Forward)	CTCCAGCTTGGGTGAAAGAG
E-Cadherin-c (Reverse)	GGGCTTTTACACTTGGCTAG
GAPDH-d (Forward)	AGGGAAGCTGACAGGGATGGCG
GAPDH-d (Reverse)	ATCGAAGATGGACGAGTGGGTA
GAPDH-e (Forward)	CCCCGCTACTCCTCCTCCTAAG
GAPDH-e (Reverse)	TCCACGACCAGTTGTCCATTCC
<b>SiRNA name</b>	<b>SiRNA sequence (5'-3')</b>
si-MALAT1(NO.1) sense	GCAAAUGAAAGCUACCAAU
si-MALAT1(NO.1) antisense	AUUGGUAGCUUUCAUUUGC
si-MALAT1(NO.2) sense	GCACAAUAUCUUUGAACUA
si-MALAT1(NO.2) antisense	UAGUUCAAAGAUUUUGUGC
si-EZH2 sense	AUCAGCUCGUCUGAACCCUUU
si-EZH2 antisense	AAGAGGUUCAGACGAGCUGAU

The si-Negative Control\_05815(siN05815122147) was obtained from Ribo Bio (Guangzhou China).

## MATERIALS AND METHODS

### Clinical samples

Forty-six serum samples (male/female: 26/20, range of age: 13-45), 68 cancer tissues and paired adjacent noncancerous tissues (male/female: 41/27, range of age: 15-48) from primary osteosarcoma patients were collected at The Second Hospital of Shandong University between 2010 and 2012. Meanwhile, serum samples from 40 healthy volunteers (male/female: 23/17, range of age: 23-44) were also collected in this study. All the patients were pathologically confirmed and the tissues were collected immediately after they were obtained during the surgical operation, and then stored at -80 °C to prevent RNA loss. They were classified according to the WHO criteria and staged according to the tumor-node-metastasis (TNM) classification. Written informed consent was obtained from all patients according to the guidelines approved by the Ethics Committee of The Second Hospital of Shandong University.

### Cell culture

Human osteosarcoma cell lines MG-63, SAOS-2, U2OS, SW1353 and one osteoblastic cell line (hFOB) were obtained from the Type Culture Collection of the Chinese Academy of Sciences (Shanghai, China). All osteosarcoma cell lines were maintained in Dulbecco's Modified Eagle's Medium (DMEM) medium (Invitrogen, Carlsbad, CA, USA) containing 10% fetal bovine serum (FBS) (Sigma-Aldrich, St. Louis, MO, USA), 100 U/ml penicillin and 100 g/ml streptomycin (Life Technologies, Grand Island, NY, USA) at 37 °C in 5% CO<sub>2</sub> and 95% air. Osteoblastic hFOB cells were grown in DMEM/F12 1:1 medium with 10% FBS, 2.5 mM L-glutamine and 0.3 mg/ml G418 at 37 °C in 5% CO<sub>2</sub> and 95% air. The cell lines passed the DNA profiling test (STR).

### RNA oligoribonucleotides and cell transfection

The small interfering RNAs (siRNAs) that specifically target lncRNA MALAT1 and EZH2 mRNA were designated as siMALAT1 and siEZH2, respectively (Genechem corporation, Shanghai, China). The MALAT1 overexpression plasmid (pMALAT1) was purchased from Addgene (Cambridge, MA, USA). To construct TGF- $\beta$  over expressing plasmids (pTGF- $\beta$ ), the gene was amplified with total RNA from human adult normal osteogenic tissues by RT-PCR as described previously [23]. Osteosarcoma cells were plated in a 6-well plate in DMEM supplemented with 10% FBS and cultured until 50-70% confluent. SiRNAs were mixed with Lipofectamine 2000 (Invitrogen) in reduced serum medium (Opti-MEM, Gibco, USA) according to the manufacturer's instructions and final concentration of siRNAs was 100 nM. Knock down effect was examined by

RT-qPCR using RNA extracted 48 hours after transfection. The siRNA sequences of lncRNA MALAT1, EZH2 and negative control used in this study are listed in Table 2.

### Dual-luciferase reporter assay

Using MG-63 DNA, the identified MALAT1 promoter DNA region was amplified, and the PCR products were cloned into the pGEM-T easy vector System (Promega, Madison, WI, USA). Then the MALAT1 promoter DNA region was incorporated into the pGL4 luciferase expression vector (Promega). Luciferase activity was assessed using the Dual-Luciferase Reporter Assay System (Promega) 48 h after transfection, and the ratio of Firefly/ Renilla luciferase activity was determined.

### Quantitative real-time PCR (RT-qPCR)

Total RNA was isolated from osteosarcoma specimens or osteosarcoma cell lines using TRIzol reagent (Invitrogen), and serum samples by using Trizol and acid phenol according to the manufacturer's instructions. And then, the cDNA was synthesized from 200 ng extracted total RNA using the PrimeScript RT reagent Kit (Takara Bio Company, Shiga, Japan) and amplified by RT-qPCR with an SYBR Green Kit (Takara Bio Company) on an ABI PRISM 7500 Sequence Detection System (Applied Biosystems) with the housekeeping gene GAPDH as an internal control. The 2<sup>- $\Delta\Delta C_t$</sup>  method was used to determine the relative quantification of gene expression levels. All the primer sequences were synthesized by RiboBio (Guangzhou, China), and their sequences are shown in Table 2. Each experiment was performed in triplicate.

### Wound-healing assays

For cell motility assays, transfected cells were seeded in 6-well plates and cultured to near confluence. Then, a linear wound was carefully made using a sterile 10  $\mu$ l pipette tip across the confluent cell monolayer, and the cell debris was removed by washing with phosphate-buffered saline. The cells were incubated in DMEM without FBS, and the wounded monolayers were then photographed at 48 h after wounding. Percent of wound closure was calculated with Image J 1.47 software. Each experiment was performed in triplicate.

### Matrigel invasion assays

Matrigel invasion assays were performed using Transwell permeable supports (Corning, USA) according to manufacturer's protocol. Briefly, cells were transfected with siMALAT1, siEZH2 or negative control for 48 h, followed by plating onto a Matrigel-coated membrane in the upper chamber of a 24-well insert (8 mm pore size) containing serum-free medium. The bottom chamber contained DMEM medium with 10% FBS. Cells were

incubated at 37 °C with 5% CO<sub>2</sub> for 48 h after plating. Then, the bottom of the chamber insert was fixed with methanol and stained with crystal violet. Cells that remained in the upper chamber were removed with a cotton swab. The number of cells that invaded through the membrane was determined from digital images captured on an inverted microscope and calculated with Image J 1.47 software. Each experiment was performed in triplicate.

### RNA immunoprecipitation (RIP)

RIP experiment was performed to investigate whether ribonucleoprotein (RNP) complex contained lncRNA MALAT1 and its potential binding protein (EZH2) in osteosarcoma cells. The Magna RIP RNA-Binding Protein Immunoprecipitation Kit (Millipore, Bedford, MA, USA) was used according to the manufacturer's instructions. The RNAs were immunoprecipitated using anti-EZH2 (catalog#4905S, Cell Signaling Technology, Beverly, MA, USA) antibody. Total RNA and controls were also assayed to demonstrate that the detected signals were from RNAs specifically binding to EZH2. The final analysis was performed using RT-qPCR and shown as the fold enrichment of MALAT1. The RIP RNA fraction Ct value was normalized to the input RNA fraction Ct value. Primers are listed in Table 2. Each experiment was performed in triplicate.

### Chromatin immunoprecipitation (ChIP)

ChIP was performed using the EZ ChIP™ Chromatin Immunoprecipitation Kit (Millipore) according to the manufacturer's protocol. Briefly, cross-linked chromatin was sonicated into 200-1000 bp fragments. The chromatin was immunoprecipitated using anti-EZH2 (#4905S, Cell Signaling Technology) and anti-H3K27me3 (#07-449, Millipore) antibodies. Normal human immunoglobulin G (IgG) was used as a negative control. RT-qPCR was conducted to detect the relative enrichment according to the method described above. Primers are listed in Table 2. Each experiment was performed in triplicate.

### Western blot and antibodies

Osteosarcoma cells were lysed with radioimmunoprecipitation assay (RIPA) buffer (Sigma-Aldrich) containing protease inhibitors (Sigma-Aldrich). Protein quantification was done using a BCA protein assay kit (Promega). The primary antibodies used for western blotting were rabbit anti-human EZH2 antibody (#4905S, 1:1000; Cell Signaling Technology), rabbit anti-human β-actin antibody (#4967S, 1:1000, Cell Signaling Technology), and rabbit anti-human E-cadherin antibody (#sc-21791, 1:1000; Santa Cruz Biotechnology, Santa Cruz, CA, USA). Horseradish peroxidase-conjugated (HRP) anti-rabbit antibodies (#sc-2004, 1:5000; Santa

Cruz Biotechnology) were used as the secondary antibodies. A total of 25 µg protein from each sample was separated on 10% Bis-Tris polyacrylamide gel through electrophoresis and then blotted onto polyvinylidene fluoride (PVDF) membranes (GE Healthcare, Piscataway, NJ, USA). Then, the membrane was blocked with 5% (5 g/100 mL) nonfat dry milk (Bio-Rad, CA, USA) in tri-buffered saline plus Tween (TBS-T) buffer for 2 h. Blots were immunostained with primary antibody at 4 °C overnight and with secondary antibody at room temperature for 1 h. Immunoblots were visualized using Immobilon™ Western Chemiluminescent HRP Substrate (Millipore) and calculated with Image J 1.47 software. Protein levels were normalized to β-actin.

### Statistical analysis

Kolmogorov-Smirnov test was used to determine the normality of the distribution of data in each group. Data were presented as median (interquartile range). Mann-Whitney U test or Kruskal-Wallis test was employed to compare differences of MALAT1 among different groups. ROC curves were established to discriminate osteosarcoma responding patients from non-responding patients. AUC was used as an accuracy index for evaluating the predictive performance of MALAT1. Survival curves were estimated with Kaplan-Meier method and comparisons were conducted using log-rank test. Correlation testing was analysed using Spearman test. MedCalc 9.3.9.0 (MedCalc, Mariakerke, Belgium) was used for ROC analysis, and other analyses were performed with SPSS version 19.0 software (SPSS, Chicago, IL, USA). Error bars in figures represent SD (Standard Deviation), and statistical significance was defined as two-sided P value < 0.05.

### CONFLICTS OF INTEREST

No potential conflicts of interest were disclosed.

### REFERENCES

1. Siclari VA, Qin L. Targeting the osteosarcoma cancer stem cell. *J Orthop Surg Res.* 2010; 5: 78.
2. Kaste SC, Pratt CB, Cain AM, Jones-Wallace DJ, Rao BN. Metastases detected at the time of diagnosis of primary pediatric extremity osteosarcoma at diagnosis: imaging features. *Cancer.* 1999; 86: 1602-1608.
3. Letson GD, Muro-Cacho CA. Genetic and molecular abnormalities in tumors of the bone and soft tissues. *Cancer Control.* 2001; 8: 239-251.
4. Fuchs B, Pritchard DJ. Etiology of osteosarcoma. *Clin Orthop Relat Res.* 2002; 397: 40-52.
5. Kapranov P, Cheng J, Dike S, Nix DA, Dutttagupta R, Willingham AT, Stadler PF, Hertel J, Hackermüller J, Hofacker IL, Bell I, Cheung E, Drenkow J, et al. RNA

maps reveal new RNA classes and a possible function for pervasive transcription. *Science*. 2007; 316: 1484-1488.

6. Zhou S, Wang J, Zhang Z. An emerging understanding of long noncoding RNAs in kidney cancer. *J Cancer Res Clin Oncol*. 2014; 140: 1989-1995.
7. Mattick JS. The genetic signatures of noncoding RNAs. *PLoS Genet*. 2009; 5: e1000459.
8. Ponting CP, Oliver PL, Reik W. Evolution and functions of long noncoding RNAs. *Cell*. 2009; 136: 629-641.
9. Zhou Q, Chen F, Zhao J, Li B, Liang Y, Pan W, Zhang S, Wang X, Zheng D. Long non-coding RNA PVT1 promotes osteosarcoma development by acting as a molecular sponge to regulate miR-195. *Oncotarget*. 2016; 7:82620-82633. doi: 10.18632/oncotarget.13012.
10. Li W, Xie P, Ruan WH. Overexpression of lncRNA UCA1 promotes osteosarcoma progression and correlates with poor prognosis. *J Bone Oncol*. 2016; 5: 80-85.
11. Li Z, Zhao L, Wang Q. Overexpression of long non-coding RNA HOTTIP increases chemoresistance of osteosarcoma cell by activating the Wnt/ $\beta$ -catenin pathway. *Am J Transl Res*. 2016; 8: 2385-2393.
12. Wang Y, Zhang L, Zheng X, Zhong W, Tian X, Yin B, Tian K, Zhang W. Long non-coding RNA LINC00161 sensitises osteosarcoma cells to cisplatin-induced apoptosis by regulating the miR-645-IFIT2 axis. *Cancer Lett*. 2016; 382: 137-146.
13. Ji P, Diederichs S, Wang W, Böing S, Metzger R, Schneider PM, Tidow N, Brandt B, Buerger H, Bulk E, Thomas M, Berdel WE, Serve H, et al. MALAT-1, a novel noncoding RNA, and thymosin beta4 predict metastasis and survival in early-stage non-small cell lung cancer. *Oncogene*. 2003; 22: 8031-8041.
14. Guffanti A, Iacono M, Pelucchi P, Kim N, Soldà G, Croft LJ, Taft RJ, Rizzi E, Askarian-Amiri M, Bonnal RJ, Callari M, Mignone F, Pesole G, et al. A transcriptional sketch of a primary human breast cancer by 454 deep sequencing. *BMC Genomics*. 2009; 10: 163.
15. Ying L, Chen Q, Wang Y, Zhou Z, Huang Y, Qiu F. Upregulated MALAT-1 contributes to bladder cancer cell migration by inducing epithelial-to-mesenchymal transition. *Mol Biosyst*. 2012; 8: 2289-2294.
16. Li Z, Yu X, Shen J. Long non-coding RNAs: emerging players in osteosarcoma. *Tumour Biol*. 2016; 37: 2811-2816.
17. Luo W, He H, Xiao W, Liu Q, Deng Z, Lu Y, Wang Q, Zheng Q, Li Y. MALAT1 promotes osteosarcoma development by targeting TGFA via MIR376A. *Oncotarget*. 2016; 7: 54733-54743. doi: 10.18632/oncotarget.10752.
18. Dong Y, Liang G, Yuan B, Yang C, Gao R, Zhou X. MALAT1 promotes the proliferation and metastasis of osteosarcoma cells by activating the PI3K/Akt pathway. *Tumour Biol*. 2015; 36: 1477-1486.
19. Luo M, Li Z, Wang W, Zeng Y, Liu Z, Qiu J. Long non-coding RNA H19 increases bladder cancer metastasis by associating with EZH2 and inhibiting E-cadherin expression. *Cancer Lett*. 2013; 333: 213-221.
20. Sun R, Shen J, Gao Y, Zhou Y, Yu Z, Hornicek F, Kan Q, Duan Z. Overexpression of EZH2 is associated with the poor prognosis in osteosarcoma and function analysis indicates a therapeutic potential. *Oncotarget*. 2016; 7: 38333-38346. doi: 10.18632/oncotarget.9518.
21. Hirata H, Hinoda Y, Shahryari V, Deng G, Nakajima K, Tabatabai ZL, Ishii N, Dahiya R. Long noncoding RNA MALAT1 promotes aggressive renal cell carcinoma through Ezh2 and interacts with miR-205. *Cancer Res*. 2015; 75: 1322-1331.
22. Qi Y, Ooi HS, Wu J, Chen J, Zhang X, Tan S, Yu Q, Li YY, Kang Y, Li H, Xiong Z, Zhu T, Liu B, et al. MALAT1 long ncRNA promotes gastric cancer metastasis by suppressing PCDH10. *Oncotarget*. 2016; 7: 12693-12703. doi: 10.18632/oncotarget.7281.
23. Hirata H, Ueno K, Nakajima K, Tabatabai ZL, Hinoda Y, Ishii N, Dahiya R. Genistein downregulates onco-miR-1260b and inhibits Wnt-signalling in renal cancer cells. *Br J Cancer*. 2013; 108: 2070-2078.
24. Chen Y, Zhang K, Li Y, He Q. Estrogen-related receptor  $\alpha$  participates transforming growth factor- $\beta$  (TGF- $\beta$ ) induced epithelial-mesenchymal transition of osteosarcoma cells. *Cell Adh Migr*. 2016; 17: 1-9.
25. Li P, Zhang X, Wang H, Wang L, Liu T, Du L, Yang Y, Wang C. MALAT1 is associated with poor response to oxaliplatin-based chemotherapy in colorectal cancer patients and promotes chemoresistance through EZH2. *Mol Cancer Ther*. 2017 Jan 9 [Epub ahead of print].
26. Zhang X, Gejman R, Mahta A, Zhong Y, Rice KA, Zhou Y, Cheunsuchon P, Louis DN, Klibanski A. Maternally expressed gene 3, an imprinted noncoding RNA gene, is associated with meningioma pathogenesis and progression. *Cancer Res*. 2010; 70: 2350-2358.
27. Gutschner T, Diederichs S. The hall marks of cancer: a long non-coding RNA point of view. *RNA Biol*. 2012; 9: 703-719.
28. Xia H, Chen Q, Chen Y, Ge X, Leng W, Tang Q, Ren M, Chen L, Yuan D, Zhang Y, Liu M, Gong Q, Bi F. The lncRNA MALAT1 is a novel biomarker for gastric cancer metastasis. *Oncotarget*. 2016; 7: 56209-56218. doi: 10.18632/oncotarget.10941.
29. Zheng HT, Shi DB, Wang YW, Li XX, Xu Y, Tripathi P, Gu WL, Cai GX, Cai SJ. High expression of lncRNA MALAT1 suggests a biomarker of poor prognosis in colorectal cancer. *Int J Clin Exp Pathol*. 2014; 7: 3174-3181.
30. Wang W, Zhu Y, Li S, Chen X, Jiang G, Shen Z, Qiao Y, Wang L, Zheng P, Zhang Y. Long noncoding RNA MALAT1 promotes malignant development of esophageal squamous cell carcinoma by targeting  $\beta$ -catenin via Ezh2. *Oncotarget*. 2016; 7: 25668-25682. doi: 10.18632/oncotarget.8257.

31. Gao KT, Lian D. Long non-coding RNA MALAT1 is an independent prognostic factor of osteosarcoma. *Eur Rev Med Pharmacol Sci.* 2016; 20: 3561-3565.
32. Tripathi VI, Shen Z, Chakraborty A, Giri S, Freier SM, Wu X, Zhang Y, Gorospe M, Prasanth SG, Lal A, Prasanth KV. Long noncoding RNA MALAT1 controls cell cycle progression by regulating the expression of oncogenic transcription factor B-MYB. *PLoS Genet.* 2013; 9: e1003368.
33. Feldstein O, Nizri T, Doniger T, Jacob J, Rechavi G, Ginsberg D. The long non-coding RNA ERIC is regulated by E2F and modulates the cellular response to DNA damage. *Mol Cancer.* 2013; 12: 131.
34. Wang P, Xue Y, Han Y, Lin L, Wu C, Xu S, Jiang Z, Xu J, Liu Q, Cao X. The STAT3-binding long noncoding RNA Inc-DC controls human dendritic cell differentiation. *Science.* 2014; 344: 310-313.
35. Gupta RA, Shah N, Wang KC, Kim J, Horlings HM, Wong DJ, Tsai MC, Hung T, Argani P, Rinn JL, Wang Y, Brzoska P, Kong B, et al. Long non-coding RNA HOTAIR reprograms chromatin state to promote cancer metastasis. *Nature.* 2010; 464: 1071-1076.
36. Khalil AM, Guttman M, Huarte M, Garber M, Raj A, Rivea Morales D, Thomas K, Presser A, Bernstein BE, van Oudenaarden A, Regev A, Lander ES, Rinn JL. Many human large intergenic noncoding RNAs associate with chromatin-modifying complexes and affect gene expression. *Proc Natl Acad Sci USA.* 2009; 106: 11667-11672.
37. Cao R, Zhang Y. The functions of E(Z)/Ezh2-mediated methylation of lysine 27 in histone H3. *Curr Opin Genet Dev.* 2004; 14: 155-164.
38. Sun NX, Ye C, Zhao Q, Zhang Q, Xu C, Wang SB, Jin ZJ, Sun SH, Wang F, Li W. Long noncoding RNA-EBIC promotes tumor cell invasion by binding to EZH2 and repressing E-cadherin in cervical cancer. *PLoS One.* 2014; 9: e100340.
39. Tsai MC, Manor O, Wan Y, Mosammamaparast N, Wang JK, Lan F, Shi Y, Segal E, Chang HY. Long noncoding RNA as modular scaffold of histone modification complexes. *Science.* 2010; 329: 689-93.
40. He H, Magi-Galluzzi C. Epithelial-to-mesenchymal transition in renal neoplasms. *Adv Anat Pathol.* 2014; 21: 174-180.

RETRACTED