

Diagnostic value of FIB-4 for liver fibrosis in patients with hepatitis B: a meta-analysis of diagnostic test

Zhi Yin^{1,2}, Jin Zou³, Qiongquan Li¹, Lizhang Chen¹

¹Department of Epidemiology and Health Statistics, Xiangya School of Public Health, Central South University, Changsha, Hunan Province 410078, China

²Division of Recruitment and Employment, University of South China, Hengyang, Hunan Province 421001, China

³Department of Cardiology, The First Affiliated Hospital of University of South China, Hengyang, Hunan Province 421001, China

Correspondence to: Lizhang Chen, email: liche4005@126.com

Keywords: liver fibrosis, hepatitis B, FIB-4, meta-analysis

Received: November 14, 2016

Accepted: December 13, 2016

Published: January 02, 2017

ABSTRACT

This study is aimed at evaluating the diagnostic value of FIB-4 for liver fibrosis in patients with hepatitis B through a meta-analysis of diagnostic test. We conducted a comprehensive search in the Pubmed, Embase, Web of Science, and Chinese National Knowledge Infrastructure before October 31, 2016. Stata 14.0 software was used for calculation and statistical analyses. We used the sensitivity, specificity, positive and negative likelihood ratio (PLR, NLR), diagnostic odds ratio (DOR) and 95% confidence intervals (CIs) to evaluate the diagnostic value of FIB-4 for liver fibrosis in patients with hepatitis B. Twenty-six studies were included in the final analyses, with a total of 8274 individuals. The pooled parameters are calculated from all studies: sensitivity of 0.69 (95%CI:0.63-0.75), specificity of 0.81 (95%CI: 0.73-0.87), PLR of 3.63 (95%CI:2.66-4.94), NLR of 0.38 (95%CI:0.32-0.44), DOR of 9.57 (95%CI: 6.67-13.74), and area under the curve (AUC) of 0.80 (95%CI: 0.76-0.83). We also conducted subgroup based on the range of cut-off values. Results from subgroup analysis showed that cut-off was the source of heterogeneity in the present study. The sensitivity and specificity of cut-off>2 were 0.69 and 0.95 with the AUC of 0.90 (95%CI: 0.87-0.92). The overall diagnostic value of FIB-4 is not very high for liver fibrosis in patients with hepatitis B. However, the diagnostic value is affected by the cut-off value. FIB-4 has relatively high diagnostic value for detecting liver fibrosis in patients with hepatitis B when the diagnostic threshold value is more than 2.0.

INTRODUCTION

It is reported that 24 billion populations have been exposed to hepatitis B virus (HBV). Three point five people are patients with chronic hepatitis B virus, and 75 million population died of hepatic failure, liver cirrhosis, liver cancer caused by HBV infection. Hepatitis B has become one of important public health issues [1]. Early detection and identification of liver fibrosis to prevent progression to cirrhosis is the goal of treatment in patients with hepatitis B. In the past decades, liver biopsy has been considered as the gold standard for determining liver fibrosis. However, this invasive operation is related to several disadvantages including sampling error and some variations [2]. These application limitations result

in developing dependable, non-invasive methods to detect the stage of fibrosis in patients with hepatitis B. Recently, research has focused on the development of noninvasive tests for the evaluation of liver fibrosis; serum-based tests have attracted the maximum attention. One of the previous methods is Fibro test which was conducted in patients with hepatitis C. Subsequent models: aspartate aminotransferase to platelet ratio index (APRI), Forns score, ELF-score, Hepascore Fibrometer have been studied worldwide [3]. The use of noninvasive indices such as the aspartate aminotransferase to platelet ratio index (APRI), the fibrosis index based on the four factors (FIB-4: the FIB-4—a test derived from the Apricot database, which produces interesting results using the following formula: $\text{age (years)} \times \text{AST [U/L]} / (\text{platelets [10}^9/\text{L]} \times (\text{ALT [U/L]})^{1/2})$ score [4], and the Forns index

has been suggested as a method to assess liver fibrosis in patients with chronic liver diseases [5].

The non-invasive diagnostic methods have become a new field. There are studies reported that the diagnostic accuracy of FIB-4 for liver fibrosis in patients with hepatitis B. However, the diagnostic ability from different study is obviously different, which may be affected by some limitations such as sampling error, inter-and intra-observer variations. Considering the limitation of single study, we try to conduct this meta-analysis based on more study samples and statistics, aiming to acquire the diagnostic efficiency of FIB-4 for liver fibrosis in patients with hepatitis B more accurately.

RESULTS

Study selection and study characteristics

The selection flow of literature search was presented in Figure 1. Our initial search obtained 15 records. 95 duplicates records were removed, and 262 records were excluded after reviewing titles, abstract and topic. 58 full-text articles were assessed for eligibility. With a further work on reading full texts of 58 articles, we removed 20 records unrelated to diagnostic value, and 4 duplicates. Similarly, 8 articles were excluded for unable to provided sufficient data. Finally, 26 articles were entered into the final qualitative and quantitative analyses [3, 5–29].

In Table 1, we summarized the characteristics of the 26 included articles in the meta-analysis of FIB-4 for liver fibrosis. The publication year of 26 studies ranged from 2009 to 2015. The studies were from different countries all over the world, and included 8274 individuals. Of the 26 studies, 3 studies are prospective design and 23 are retrospective. Most of them are multicenter studies. The sample size varied from 52 to 2411. Among the 26 studies, 18 studies were conducted in Asian (China, India, Korea), 4 in Caucasian population, 3 in Central East, and 1 in African population. The four-fold table data was presented in Table 1.

Quality assessment

The quality score of each study was presented in Table 1. The score of each study was more than 11 points. All the included studies received moderately high scores from the QUADAS-2 quality assessments.

Pooled diagnostic values

We use the random effect model to pool the sensitivity and specificity because the I^2 values were more than 50%. The pooled diagnostic values of FIB-4 for detecting liver fibrosis in patients with hepatitis B were presented in Table 2. The overall pooled sensitivity and specificity were 0.69 (95%CI:0.63-0.75,

Figure 2) and 0.81 (95%CI: 0.73-0.87, Figure 3). The pooled PLR was 3.63 (95%CI:2.66-4.94), NLR was 0.38 (95%CI:0.32-0.44), and DOR was 9.57 (95%CI: 6.67-13.74). The overall SROC curve was shown in Figure 4, and AUC was 0.81 (95%CI: 0.77-0.84). Fagan plot was shown in Figure 5. The prior probability was 20%, and the post-test probability was 48% of LR-positive, and 9% of LR-negative. The diagnostic accuracy of FIB-4 for detecting liver fibrosis in patients with hepatitis B was not very high.

We subgroup analyses based on the range of cut-off values. Results from subgroup analysis showed that cut-off was the source of heterogeneity in the present study. The sensitivity and specificity of cut-off>2 were 0.69 (95%CI: 0.60-0.84) and 0.95 (95%CI: 0.83-0.99) with the AUC of 0.90 (95%CI: 0.87-0.92). The pooled diagnostic values other two cut-off range was presented in Table 2.

Sensitivity analysis and publication bias

Sensitivity analysis was conducted by sequentially excluding some special studies (with small sample size, bigger cut-off value) [20, 27]. The pooled results did not alter, indicating the results were stable. The Deek's plot shows there was no publication bias ($t=1.670$, $P=0.107$, Figure 6).

DISCUSSION

With the increasing popularity of hepatitis B over the world, it is needed for effective and convenient diagnostic methods. In the past decades, the arise of non-invasive and new methods in detecting liver fibrosis had developed rapidly. Among all kinds of examination methods, more and more researchers paid attention on combined diagnostic index. FIB-4, one of the novel methods in detecting liver fibrosis, attracted more attention and was widely explored for its role in patients with hepatitis B [5].

In this meta-analysis, we found FIB-4 achieved the overall pooled sensitivity of 0.69 (95%CI:0.63-0.75) and specificity 0.81 (95%CI: 0.73-0.87), and AUC was 0.81 (95%CI: 0.77-0.84). The results showed that the diagnostic accuracy may not be high enough as expected. However, FIB-4 still achieves almost same level diagnostic value with some invasive methods [21]. The DOR represents the value that combines sensitivity and specificity that ranges from 0 to infinity, with higher value meaning better diagnostic ability. Our results show the DOR was 9.57 (6.67-13.74), suggesting the overall pooled accuracy was not high. The pooled PLR of 3.63 means that patients with liver fibrosis have approximately a 3.63-fold higher chance of being FIB-4 positive compared with individuals without liver fibrosis.

The pooled NLR was 0.38, indicating that the probability of patients having liver fibrosis is 38% if the FIB-4 was negative. According to the criteria, the accuracy is considered to be high when PLR>10 and NLR<0.1. The present result did arrive the standard, suggesting that FIB-4 had sub-optimal accuracy for clinical purpose [30]. However, FIB-4 has relatively high diagnostic value for detecting liver fibrosis in patients with hepatitis B when the diagnostic threshold value was more than 2.0.

This result indicates that FIB had higher accuracy for developed liver fibrosis in patients with hepatitis B. Considered the diagnostic ability of other non-invasive methods, the advantage of FIB-4 is not outstanding in severe liver fibrosis stage. Previous studies reported that the aspartate transaminase/blood platelet index (APRI) and Fibro were also potential non-invasive methods. Previous meta-analysis suggested that AUCs of APRI and Fibro for detecting liver fibrosis were 0.75 and 0.87

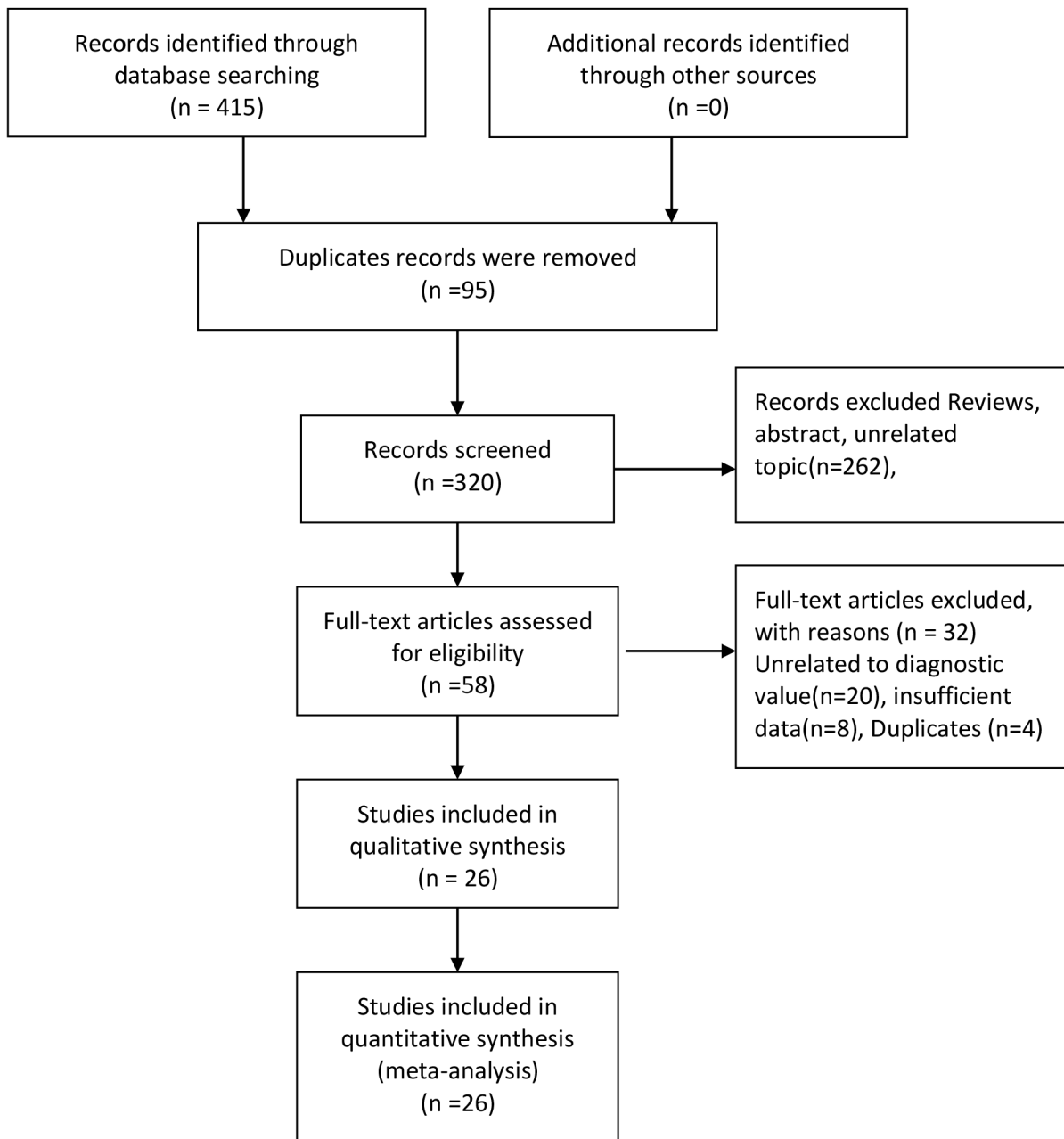


Figure 1: Flow diagram of studies selection process.

Table 1: Characteristics of the included studies in the meta-analysis

No.	Author	Year	Region	Mean age(y)	Sample size	Study design	Study population	Length of tissue	Cut off	TP	FP	FN	TN	Score of Quality
1	Li	2013	USA	45	284	Retrospective	Multicenter	-	5.17	19	1	32	232	13
2	Koksal	2015	USA	43	229	Retrospective	Multicenter	-	1.45	98	5	94	32	12
3	Erdogan	2013	Turkey	41	221	Retrospective	Single center	-	1.02	53	63	15	90	12
4	Ucar	2013	Turkey	45	73	Retrospective	Single center	-	1.09	29	12	12	20	13
5	Shrivastava	2013	India	30	52	Retrospective	Single center	15-20	2.50	2	2	4	44	14
6	Basar	2013	Turkey	45	76	Prospective	Single center	>10	1.09	37	6	14	19	14
7	Seto	2011	H.K.	38	237	Retrospective	Single center	>15	1.45	40	41	37	119	14
8	Sebastiani	2011	French	47	2411	Retrospective	Multicenter	-	1.45	784	455	328	844	14
9	Kim	2010	Korea	39	668	Retrospective	Single center	>15	1.00	301	92	29	246	14
10	Bonnard	2010	Africa	35	59	Prospective	Single center	-	0.80	30	7	11	11	12
11	Mallet	2009	French	42	138	Retrospective	Multicenter	17.6	1.45	29	26	12	71	13
12	Wu	2010	China	33	78	Retrospective	Multicenter	>15	1.45	20	7	12	39	14
13	Liu	2011	China	32	623	Retrospective	Multicenter	>15	1.10	158	130	57	278	13
14	Zhu	2011	China	37	175	Retrospective	Multicenter	>15	1.70	57	15	22	81	12
15	Wu	2012	China	33	482	Retrospective	Multicenter	>15	1.57	189	66	81	146	13
16	Zhu	2012	China	42	159	Prospective	Single center	>15	4.90	91	10	13	45	12
17	Chen	2013	China	40	148	Retrospective	Single center	>15	1.45	27	29	13	79	13
18	Wang	2013	China	34	231	Retrospective	Single center	>15	1.45	37	24	31	139	11
19	Wang	2013	China	37	149	Retrospective	Multicenter	>10	1.45	60	21	29	39	12
20	Xun	2013	China	31	197	Prospective	Single center	>15	1.00	80	26	32	59	13
21	Zeng	2013	China	36	198	Retrospective	Single center	15-20	31.61	25	35	13	125	12
22	Liu	2014	China	38	111	Retrospective	Single center	16.67	2.29	11	28	1	74	12
23	Xu	2015	China	36	446	Retrospective	Single center	>16	1.07	160	84	59	143	11
24	Li	2013	China	45	284	Retrospective	Multicenter	-	5.17	19	1	32	232	11
25	Ji	2011	China	36	313	Retrospective	Single center	>20	2.96	44	19	6	244	11
26	Li	2015	China	38	232	Retrospective	Single center	-	1.58	66	46	20	152	11

[31, 32]. The diagnostic ability of FIB-4 is prior to APRI but less than Fibro. The FIB-4 was firstly applied in the diagnostic of hepatitis C. It is reported that the AUC of FIB-4 was 0.74 in patients with hepatitis C. The FIB-4 in hepatitis B was obviously higher than in the hepatitis C [33].

Our results found that the diagnostic of FIB-4 for liver fibrosis had many different kinds of cut-off values. It is pretty difficult for clinical practice. Therefore, this studies conducted subgroup analyses based the range of cut-off values. The diagnostic threshold value of FIB-4 achieves the highest AUC when the cut-off was more than 2. The corresponding AUC was 0.90 (95%CI: 0.87-0.92) with the sensitivity of 0.69 and the specificity of

0.95, indicating the diagnostic ability within this interval is higher than other range. However, there are still some studies with so high cut-off values that they can't be pooled in the meta-analysis. Xu et al used the 223.7 as the cut-off value of liver fibrosis in the patients with hepatitis B, which can't be included in the final analyses. More study with strict design, larger sample size, and multicenter are required to test the accuracy of FIB-4 and identify the proper cut-off value range.

We strictly follow the PRISM guidelines to conduct the meta-analysis [34]. But, there are still some limitations in the present meta-analysis. First, although we have tried our best to search relevant studies, we may neglect some studies non-published

Table 2: Summary estimated of diagnostic performance of FIB-4 for liver fibrosis

Category	SEN (95%CI)	SPE (95%CI)	PLR (95%CI)	NLR (95%CI)	DOR (95%CI)	AUC (95%CI)
Overall	0.69[0.63-0.75]	0.81[0.73-0.87]	3.63[2.66-4.94]	0.38[0.32-0.44]	9.57[6.67-13.74]	0.80[0.76-0.83]
0.8-1.1	0.77[0.70-0.82]	0.66[0.63-0.70]	2.29[1.95-2.68]	0.35[0.26-0.47]	6.52[4.18-10.19]	0.72[0.68-0.76]
1.2-2.0	0.65[0.60-0.70]	0.76[0.711-0.81]	2.72[2.28-3.24]	0.46[0.41-0.52]	5.88[4.59-7.55]	0.76[0.72-0.79]
>2	0.69[0.60-0.84]	0.95[0.83-0.99]	12.89[4.47-37.18]	0.33[0.19-0.57]	39.17[16.13-95.13]	0.90[0.87-0.92]

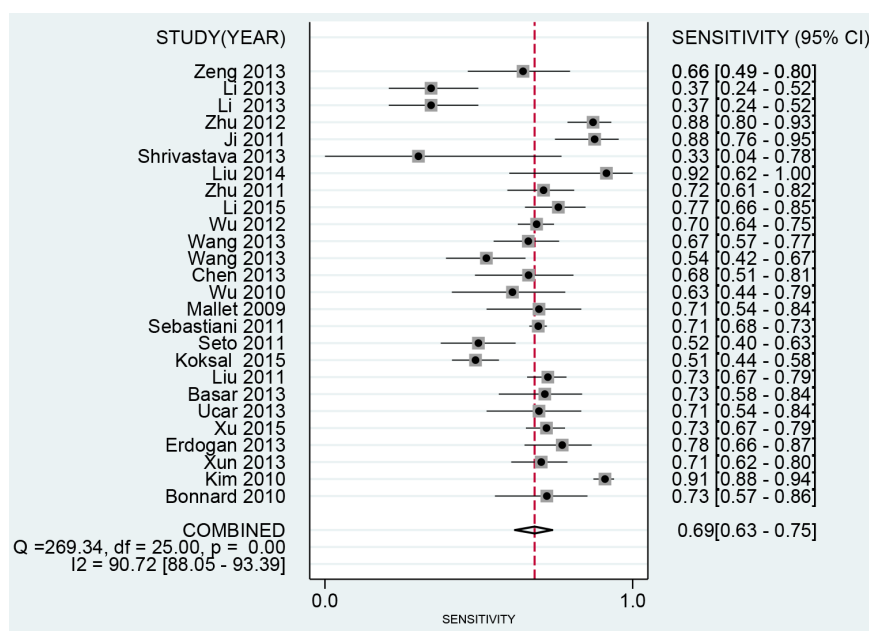


Figure 2: Forest plot of pooled sensitivity of FIB-4 for liver fibrosis in patients with hepatitis B.

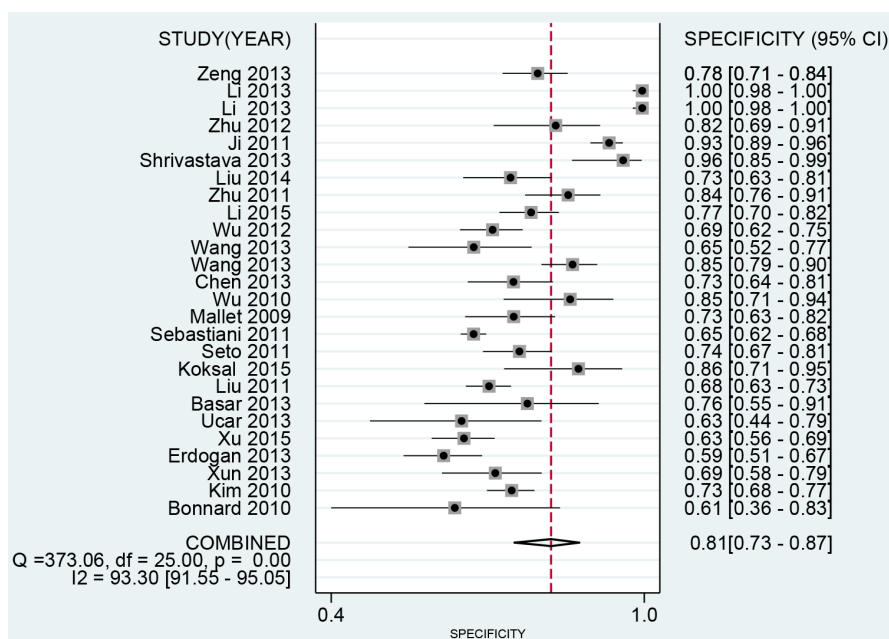


Figure 3: Forest plot of pooled specificity of FIB-4 for liver fibrosis in patients with hepatitis B.

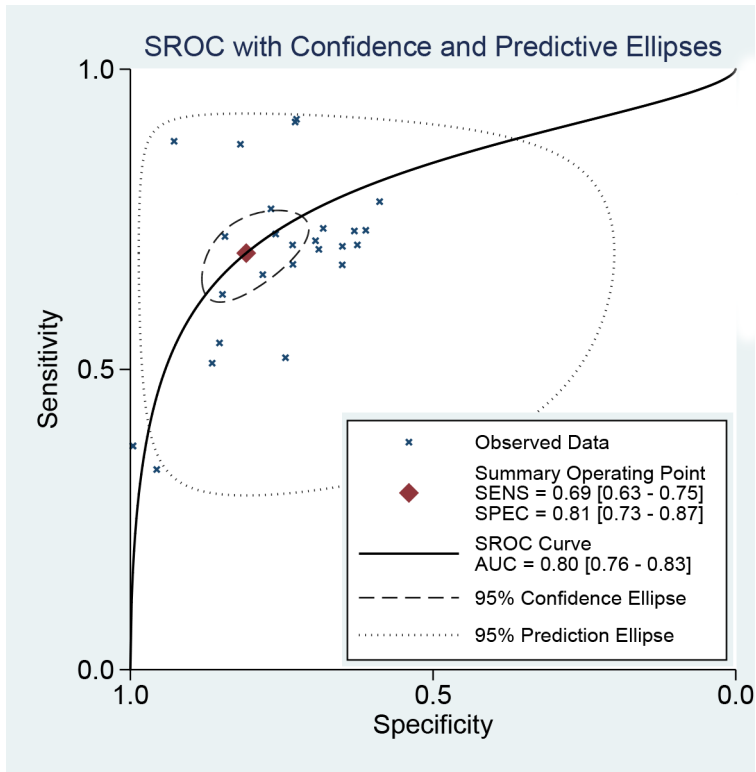


Figure 4: The SROC curve of FIB-4 for liver fibrosis in patients with hepatitis B.

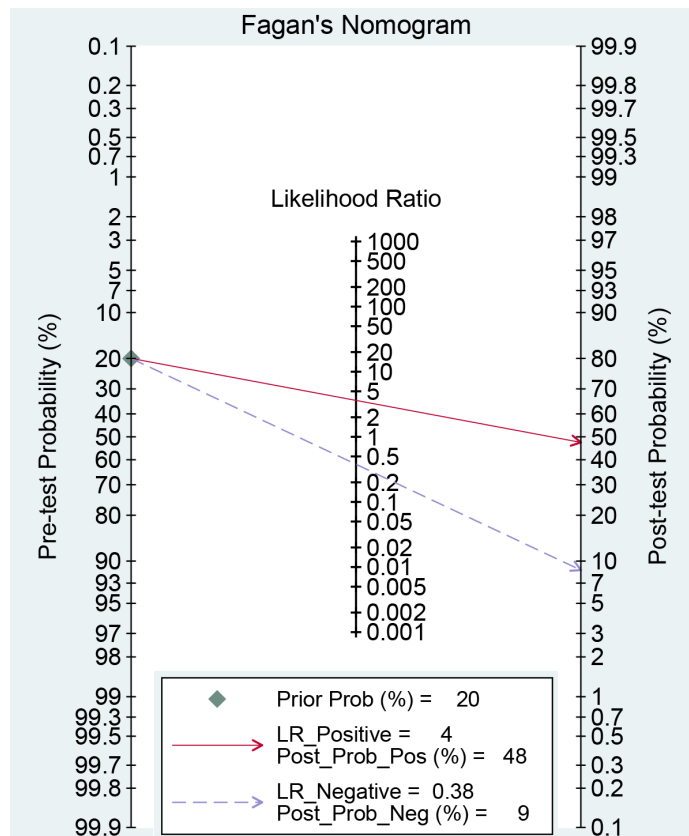


Figure 5: Fagan diagram evaluating the overall diagnostic value of FIB-4 for liver fibrosis in patients with hepatitis B.

online. Second, there could exist some selection bias of population in the meta-analysis because the present studies only one African population, and most of studies are from Asian population. Third, the condition of study population included in the meta-analysis may have other diseases, which could overestimate or underestimate the diagnostic ability of FIB-4 for liver fibrosis. Four, the overall heterogeneity was high (I^2 : 88.0%-95%.0), we did not found the source of heterogeneity by subgroup. Finally, we did not consider the relation between sample quality and different cut-off values. Although our results presented that FIB-4 has relatively high diagnostic value for detecting liver fibrosis in patients with hepatitis B when the diagnostic threshold value was more than 2.0, the diagnostic ability of FIB-4 would be different in different progression of liver

fibrosis such as liver cirrhosis. For different stage of liver fibrosis, it requires more studies and analyses to confirm the diagnostic value of FIB-4 in specific stage fibrosis.

CONCLUSIONS

In conclusions, our analysis showed that the overall diagnostic value of FIB-4 may not be very high and have sub-optimal accuracy for liver fibrosis in patients with hepatitis B. However, the diagnostic value is affected by the cut-off value. FIB-4 has relatively high diagnostic value for detecting liver fibrosis in patients with hepatitis B when the diagnostic threshold value was more than 2.0. We expect further studies to confirm our analysis.

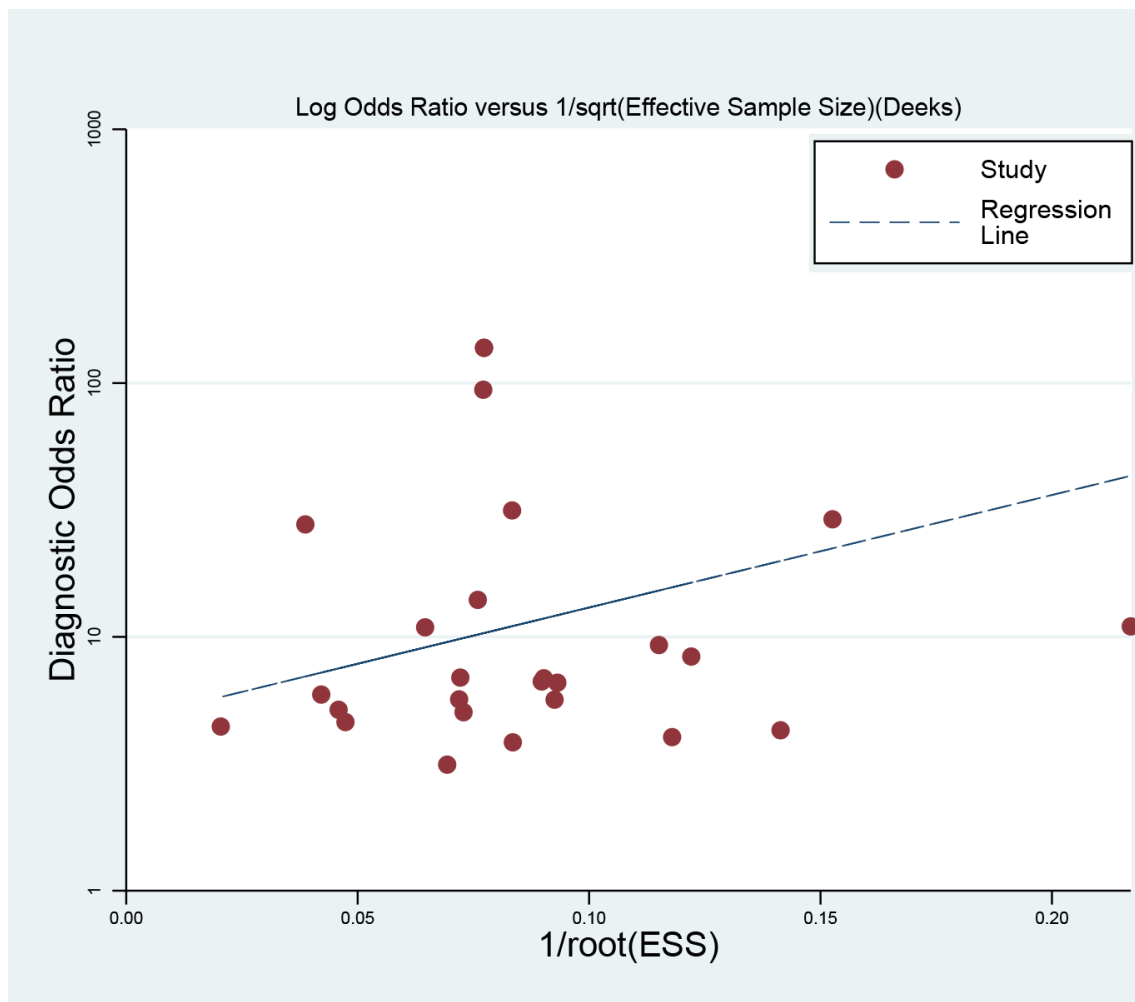


Figure 6: Deek's funnel plot to evaluate the publication bias.

MATERIALS AND METHODS

Literature search

A systematic search was conducted for relevant articles published in the PubMed, Embase, Web of Science, and Chinese National Knowledge Infrastructure from inception to October 31, 2016. The following keywords are used: FIB-4, aspartate aminotransferase, AST, alanine aminotransferase, ALT, platelet, PLT, hepatitis B, liver fibrosis, and cirrhosis. The language was restricted in Chinese and English. We also retrieve the reference lists of relevant reviews to identify to additional studies.

Selection criteria

The included studies must meet the following criteria: (1) all the patients with liver fibrosis must be diagnosed through the gold standard (liver biopsy). (2) studies provided diagnostic value of FIB-4 for liver fibrosis. (3) study must present sufficient data to allow calculation of the diagnostic value: True positive (TP), false positive (FP), false negative (FN), and true negative (TN). Duplicate publications, studies without qualified data, focused on other diseases, and letters, reviews, case reports and editorials were excluded.

Data extraction

For each study included in the meta-analysis, the following information was extracted: the first author, publication year, region, mean age, sample size, study design, study population, length of tissue, cut-off value of diagnostic, four data (TP, FP, FN, TN). Two authors (ZJ and LQX) independently extract this information by using a standard excel sheet, and cross check the data. Any disputes were solved by the third investigator (CLZ).

Quality evaluation

We used the Quality Assessment of Diagnostic Accuracy Studies 2 (QUADAS-2) to assess the quality of included studies. We used a quantitative method to assess the studies. The QUADAS-2 included 14 items [35]. Each key domain includes two sections: risk of bias and applicability. If answers to all signaling questions for a domain are 'yes', then we could judge the risk of bias is low. If any question is answered 'no', potential bias exists. Concerns about applicability are judged as 'low', 'high', or 'unclear'. We defined 'Yes' as one scores.

Statistical analysis

We used the Stata 14 software (StataCorp LP, College Station, TX, USA) to perform all statistical analyses. The heterogeneity within studies was evaluated

by Q Test and I^2 test, and $I^2 > 50\%$ presented the existence of heterogeneity [36]. The bivariate regression model was used to calculate the pooled sensitivity, specificity, positive and negative likelihood ratios (PLRs and NLRs), diagnostic odds ratio (DOR) and their 95% confidence intervals (CIs) [37]. We also calculated the area under the receiver operator characteristic curve (SROC, AUC). The AUC ranged from 0 to 1, and an AUC of 1 represents the perfect discrimination ability, while an AUC < 0.5 shows a poor diagnostic ability [38]. We also conducted a subgroup based on cut-off value. We used the Deek's funnel plot to assess the publication bias, and Fagan plots shows the relationship between the prior probability, the likelihood ratio, and posterior test probability [39]. $P < 0.05$ was considered to be significant.

Abbreviations

Aspartate aminotransferase to platelet ratio index TP, APRI; Fibrosis index based on the 4 factor, FIB-4; aspartate aminotransferase, AST; alanine aminotransferase, ALT; platelet, PLT; Quality Assessment of Diagnostic Accuracy Studies 2, QUADAS-2; true positives; FP, false positives; FN, false negatives; TN, true negatives; ROC, Receiver Operating Characteristic; SROC, summary receiver operator characteristic PLRs, positive likelihood ratios; NLRs, negative likelihood ratios; DORs, diagnostic odds ratios; CI, confidence intervals.

ACKNOWLEDGMENTS

YZ and CLZ designed this study and contributed substantially to the design of the search strategy. YZ and CLZ searched and selected the trials and extracted data. ZJ and YZ performed the analysis and interpreted the data. YZ wrote the manuscript. YZ, LQX and CLZ critically reviewed the manuscript. YZ, ZJ and CLZ participated in the data extraction and critically revised it. YZ and CLZ proofread the final version. All authors read and approved the final manuscript.

CONFLICTS OF INTEREST

The authors declare that they have no conflict of interest.

REFERENCES

1. Ganem D and Prince AM. Hepatitis B virus infection--natural history and clinical consequences. *N Engl J Med.* 2004; 350:1118-1129.
2. Fattovich G, Bortolotti F and Donato F. Natural history of chronic hepatitis B: special emphasis on disease progression and prognostic factors. *J Hepatol.* 2008; 48:335-352.

3. Basar O, Yimaz B, Ekiz F, Ginis Z, Altinbas A, Aktas B, Tuna Y, Coban S, Delibas N and Yuksel O. Non-invasive tests in prediction of liver fibrosis in chronic hepatitis B and comparison with post-antiviral treatment results. *Clin Res Hepatol Gastroenterol.* 2013; 37:152-158.
4. Sterling RK, Lissen E, Clumeck N, Sola R, Correa MC, Montaner J, S SM, Torriani FJ, Dieterich DT, Thomas DL, Messinger D and Nelson M. Development of a simple noninvasive index to predict significant fibrosis in patients with HIV/HCV coinfection. *Hepatology.* 2006; 43:1317-1325.
5. Ucar F, Sezer S, Ginis Z, Ozturk G, Albayrak A, Basar O, Ekiz F, Coban S, Yuksel O, Armutcu F and Akbal E. APRI, the FIB-4 score, and Forn's index have noninvasive diagnostic value for liver fibrosis in patients with chronic hepatitis B. *Eur J Gastroenterol Hepatol.* 2013; 25:1076-1081.
6. Bonnard P, Sombie R, Lescure FX, Bougouma A, Guiard-Schmid JB, Poynard T, Cales P, Housset C, Callard P, Le Pendeven C, Drabo J, Carrat F and Pialoux G. Comparison of elastography, serum marker scores, and histology for the assessment of liver fibrosis in hepatitis B virus (HBV)-infected patients in Burkina Faso. *AM J Trop Med Hyg.* 2010; 82:454-458.
7. Chen B, Ye B, Zhang J, Ying L and Chen Y. RDW to platelet ratio: a novel noninvasive index for predicting hepatic fibrosis and cirrhosis in chronic hepatitis B. *PLoS One.* 2013; 8:e68780.
8. Erdogan S, Dogan HO, Sezer S, Uysal S, Ozhamam E, Kayacetin S and Koca Y. The diagnostic value of non-invasive tests for the evaluation of liver fibrosis in chronic hepatitis B patients. *Scand J Clin Lab Invest.* 2013; 73:300-308.
9. Ji D, Shao Q, Han P, Zhang J, Niu X, Li B, Li F and Chen G. Analysis of the efficiency of Fibroscan combined with serologic markers for diagnosing liver fibrosis. *Med J Chin PLA.* 2011:1136-1138.
10. Jing L, Ying-xia L, Chang-feng D, Si-min Y, Sha-xi LI, Jing Y, Chuan-tie C, Mei-fen Z, Yi-min L and Zhong-tian P. ARFI, Forns index, FIB-4 and APRI diagnosis liver ifbrosis in patients with chronic liver diseases. *Chinese Journal of Liver Diseases.* 2014:18-21.
11. Kim BK, Kim DY, Park JY, Ahn SH, Chon CY, Kim JK, Paik YH, Lee KS, Park YN and Han KH. Validation of FIB-4 and comparison with other simple noninvasive indices for predicting liver fibrosis and cirrhosis in hepatitis B virus-infected patients. *Liver Int.* 2010; 30:546-553.
12. Koksai AR, Alkim H, Boga S, Ergun M, Bayram M, Ozguven BY and Alkim C. Effect of Entecavir and Tenofovir Treatment on Noninvasive Fibrosis Scores: Which One Is Better? *Am J Ther.* 2016; 23: e429-e438.
13. Li J, Gordon SC, Rupp LB, Zhang T, Boscarino JA, Vijayadeva V, Schmidt MA and Lu M. The validity of serum markers for fibrosis staging in chronic hepatitis B and C. *J Viral Hepat.* 2014; 21:930-937.
14. Li X, Zhang Z, Cai Q, Xie Q, Zhang Y, Jiang X, Li X and Yin H. Judgement of liver fibrosis by gamma-glutamyltransferase to qHBsAg ratio in patients with chronic hepatitis B. *J Prac Hepatol.* 2015; 18:141-144.
15. Liu HB, Zhou JP, Zhang Y, Lv XH and Wang W. Prediction on liver fibrosis using different APRI thresholds when patient age is a categorical marker in patients with chronic hepatitis B. *Clin Chim Acta.* 2011; 412:33-37.
16. Liu XD, Wu JL, Liang J, Zhang T and Sheng QS. Globulin-platelet model predicts minimal fibrosis and cirrhosis in chronic hepatitis B virus infected patients. *World J Gastroenterol.* 2012; 18:2784-2792.
17. Mallet V, Dhalluin-Venier V, Roussin C, Bourliere M, Pettinelli ME, Giry C, Vallet-Pichard A, Fontaine H and Pol S. The accuracy of the FIB-4 index for the diagnosis of mild fibrosis in chronic hepatitis B. *Aliment Pharmacol Ther.* 2009; 29:409-415.
18. Sebastiani G, Castera L, Halfon P, Pol S, Mangia A, Di Marco V, Pirisi M, Voiculescu M, Bourliere M and Alberti A. The impact of liver disease aetiology and the stages of hepatic fibrosis on the performance of non-invasive fibrosis biomarkers: an international study of 2411 cases. *Aliment Pharmacol Ther.* 2011; 34:1202-1216.
19. Seto WK, Lee CF, Lai CL, Ip PP, Fong DY, Fung J, Wong DK and Yuen MF. A new model using routinely available clinical parameters to predict significant liver fibrosis in chronic hepatitis B. *PLoS One.* 2011; 6:e23077.
20. Shrivastava R, Sen S, Banerji D, Praharaj AK, Chopra GS and Gill SS. Assessment of non-invasive models for liver fibrosis in chronic hepatitis B virus related liver disease patients in resource limited settings. *Indian J Pathol Microbiol.* 2013; 56:196-199.
21. Wang H, Xue L, Yan R, Zhou Y, Wang MS, Cheng MJ and Huang HJ. Comparison of FIB-4 and APRI in Chinese HBV-infected patients with persistently normal ALT and mildly elevated ALT. *J Viral Hepat.* 2013; 20: e3-e10.
22. Wang Y, Xu MY, Zheng RD, Xian JC, Xu HT, Shi JP, Li SB, Qu Y, Dong YW and Lu LG. Prediction of significant fibrosis and cirrhosis in hepatitis B e-antigen negative patients with chronic hepatitis B using routine parameters. *Hepatol Res.* 2013; 43:441-451.
23. Wu SD, Ni YJ, Liu LL, Li H, Lu LG and Wang JY. Establishment and validation of a simple noninvasive model to predict significant liver fibrosis in patients with chronic hepatitis B. *Hepatol Int.* 2012; 6:360-368.
24. Wu SD, Wang JY and Li L. Staging of liver fibrosis in chronic hepatitis B patients with a composite predictive model: a comparative study. *World J Gastroenterol.* 2010; 16:501-507.
25. Xu WS, Qiu XM, Ou QS, Liu C, Lin JP, Chen HJ, Lin S, Wang WH, Lin SR and Chen J. Red blood cell distribution width levels correlate with liver fibrosis and inflammation: a noninvasive serum marker panel to predict the severity of fibrosis and inflammation in patients with hepatitis B. *Medicine (Baltimore).* 2015; 94:e612.

26. Xun YH, Zang GQ, Guo JC, Yu XL, Liu H, Xiang J, Liu J and Shi JP. Serum hepatitis B surface antigen quantification as a useful assessment for significant fibrosis in hepatitis B e antigen-positive hepatitis B virus carriers. *J Gastroenterol Hepatol.* 2013; 28:1746-1755.
27. Zeng DW, Liu YR, Zhang JM, Zhu YY, Lin S, You J, Li YB, Chen J, Zheng Q, Jiang JJ and Dong J. Serum ceruloplasmin levels correlate negatively with liver fibrosis in males with chronic hepatitis B: a new noninvasive model for predicting liver fibrosis in HBV-related liver disease. *PLoS One.* 2013; 8:e77942.
28. Zhu CL, Li WT, Li Y and Gao RT. Serum levels of tissue inhibitor of metalloproteinase-1 are correlated with liver fibrosis in patients with chronic hepatitis B. *J Dig Dis.* 2012; 13:558-563.
29. Zhu X, Wang LC, Chen EQ, Chen XB, Chen LY, Liu L, Lei XZ, Liu C and Tang H. Prospective evaluation of FibroScan for the diagnosis of hepatic fibrosis compared with liver biopsy/AST platelet ratio index and FIB-4 in patients with chronic HBV infection. *Dig Dis Sci.* 2011; 56:2742-2749.
30. Li ZZ, Shen LF, Li YY, Chen P and Chen LZ. Clinical utility of microRNA-378 as early diagnostic biomarker of human cancers: a meta-analysis of diagnostic test. *Oncotarget.* 2016; 7:58569-58578. doi: 10.18632/oncotarget.10707.
31. Jin W, Lin Z, Xin Y, Jiang X, Dong Q and Xuan S. Diagnostic accuracy of the aspartate aminotransferase-to-platelet ratio index for the prediction of hepatitis B-related fibrosis: a leading meta-analysis. *BMC Gastroenterol.* 2012; 12:14.
32. Salkic NN, Jovanovic P, Hauser G and Brcic M. FibroTest/Fibrosure for significant liver fibrosis and cirrhosis in chronic hepatitis B: a meta-analysis. *Am J Gastroenterol.* 2014; 109:796-809.
33. Chou R and Wasson N. Blood tests to diagnose fibrosis or cirrhosis in patients with chronic hepatitis C virus infection. *Ann Intern Med.* 2013; 159:372.
34. Moher D, Liberati A, Tetzlaff J and Altman DG. Preferred reporting items for systematic reviews and meta-analyses: the PRISMA statement. *Int J Surg.* 2010; 8:336-341.
35. Whiting PF, Rutjes AW, Westwood ME, Mallett S, Deeks JJ, Reitsma JB, Leeflang MM, Sterne JA and Bossuyt PM. QUADAS-2: a revised tool for the quality assessment of diagnostic accuracy studies. *Ann Intern Med.* 2011; 155:529-536.
36. Higgins JP, Thompson SG, Deeks JJ and Altman DG. Measuring inconsistency in meta-analyses. *BMJ.* 2003; 327:557-560.
37. Reitsma JB, Glas AS, Rutjes AW, Scholten RJ, Bossuyt PM and Zwinderman AH. Bivariate analysis of sensitivity and specificity produces informative summary measures in diagnostic reviews. *J Clin Epidemiol.* 2005; 58:982-990.
38. Hamza TH, Arends LR, van Houwelingen HC and Stijnen T. Multivariate random effects meta-analysis of diagnostic tests with multiple thresholds. *BMC Med Res Methodol.* 2009; 9:73.
39. Song F, Khan KS, Dinnes J and Sutton AJ. Asymmetric funnel plots and publication bias in meta-analyses of diagnostic accuracy. *Int J Epidemiol.* 2002; 31:88-95.